

| | | | |
|--|------------------------|---|-------------|
| WAAS CH 77614 W01A | APP CRS 005° | Rwy Idg TDZE 410 Apt Elev 420 | 4003 |
|--|------------------------|---|-------------|

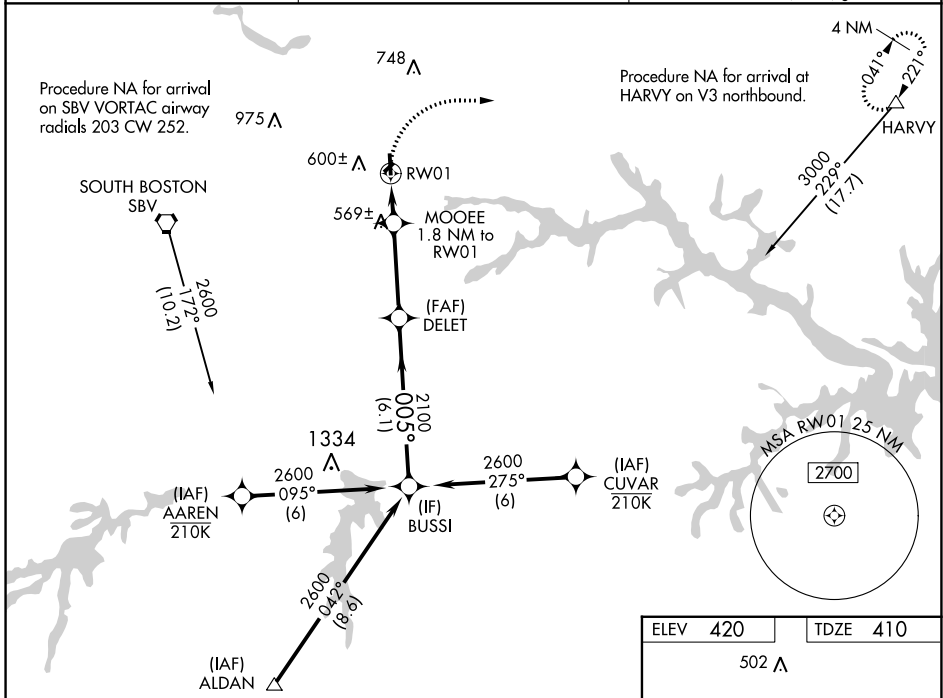
RNAV (GPS) RWY 1

WILLIAM M TUCK (W78)

⚠ For uncompensated Baro-VNAV systems, LNAV/VNAV NA below -15°C (5°F) or above 54°C (130°F).
⚠ DME/DME RNP-0.3 NA. Helicopter visibility reduction below 1 SM NA. When local altimeter setting not received, use Danville altimeter setting and increase LPV DA to 739 feet and LNAV/VNAV DA to 785 feet and all MDA 100 feet; increase LPV all Cats visibility 1/8 mile and LNAV/VNAV all Cats visibility and Circling Cat C visibility 1/4 mile and LNAV Cat C visibility 1/2 mile. Night landing: Rwy 19 NA. Baro-VNAV and VDP NA when using Danville altimeter setting. Circling NA to Rwys 6-24.

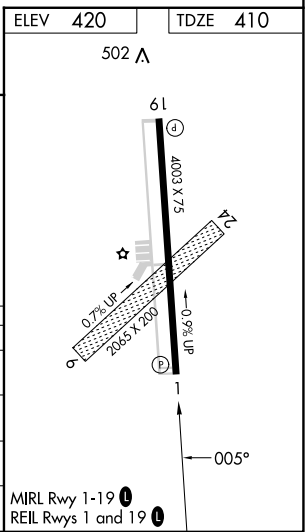
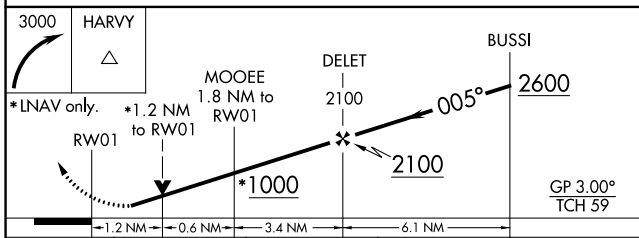
MISSED APPROACH:
 Climbing right turn to 3000 direct HARVY and hold.

| | | |
|--------------------------|--|---------------------------------|
| AWOS-3 119.425 | WASHINGTON CENTER 124.05 352.0 | UNICOM 122.8 (CTAF) 0 |
|--------------------------|--|---------------------------------|



NE-3, 08 AUG 2024 to 05 SEP 2024

NE-3, 08 AUG 2024 to 05 SEP 2024



| CATEGORY | A | B | C | D |
|-------------------|-------|-------------|-------------------------------|----|
| LPV DA | 660-1 | 250 (300-1) | | NA |
| LNAV/VNAV DA | 706-1 | 296 (300-1) | | NA |
| LNAV MDA | 820-1 | 410 (400-1) | 820-1 1/8 410 (400-1 1/8) | NA |
| C CIRCLING | 960-1 | 540 (600-1) | 1060-1 3/4 640 (700-1 3/4) | NA |