

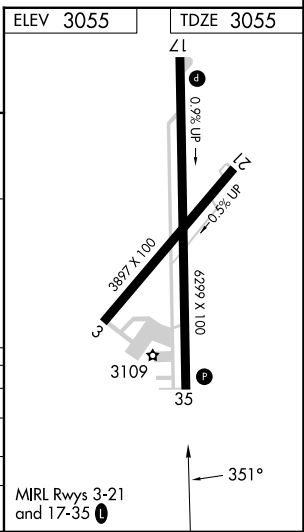
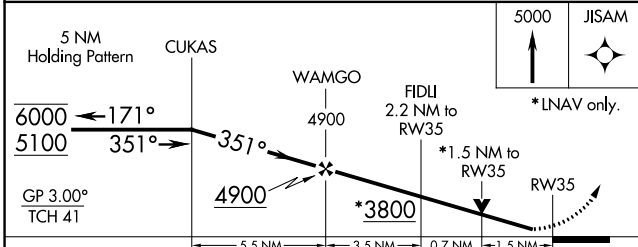
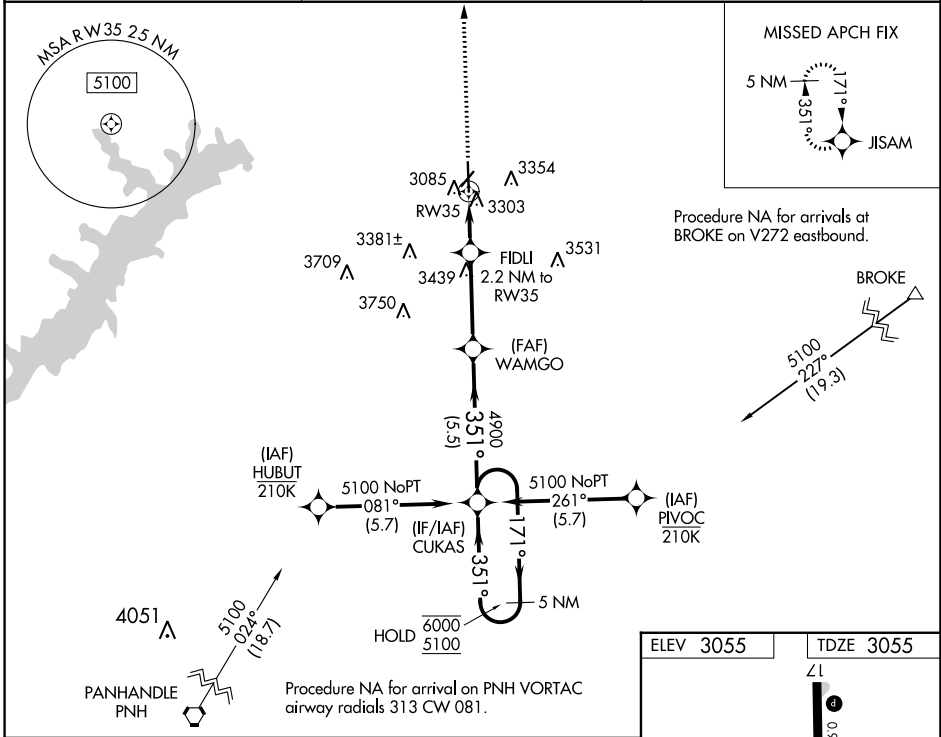
WAAS CH <b>53442</b> <b>W35A</b>	APP CRS <b>351°</b>	Rwy Idg TDZE Apt Elev	<b>6299</b> <b>3055</b> <b>3055</b>
--	------------------------	-----------------------------	---

# RNAV (GPS) RWY 35

HUTCHINSON COUNTY (B.G.D)

RNP APCH-GPS.		MISSED APPROACH: Climb to 5000 direct JISAM and hold.
<b>⚠</b> Rwy 35 helicopter visibility reduction below 3/4 SM NA. For uncompensated Baro-VNAV systems, LNAV/VNAV NA below -14°C or above 54°C.		

ASOS <b>118.325</b>	AMARILLO APP CON ★ <b>119.5 307.0</b>	UNICOM <b>123.0 (CTAF) 0</b>
------------------------	--	---------------------------------



CATEGORY	A	B	C	D
LPV DA		3305-1	250 (300-1)	
LNAV/DA		3580-1½	525 (600-1½)	
LNAV MDA	3560-1	505 (600-1)	3560-1⅓	505 (600-1⅓)
CIRCLING	3620-1 565 (600-1)	3660-1 605 (700-1)	3760-2 705 (800-2)	3760-2¼ 705 (800-2¼)

SC-2, 08 AUG 2024 to 05 SEP 2024

SC-2, 08 AUG 2024 to 05 SEP 2024