

WAAS Ch 77512 W36A	APP CRS 003°	Rwy Idg 5302 TDZE 1353 Apt Elev 1353
--	------------------------	---

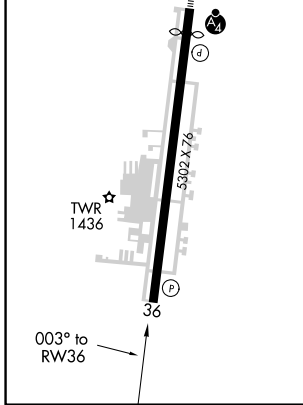
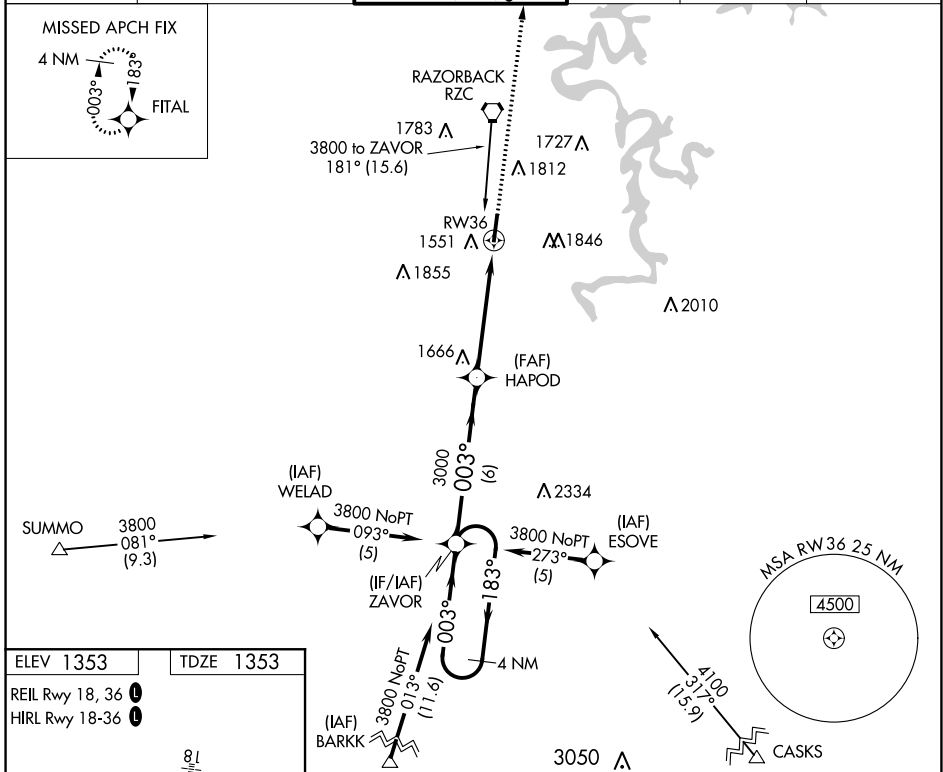
RNAV (GPS) RWY 36

SPRINGDALE MUNI (ASG)

⚠ DME/DME RNP-0.3 NA. Circling NA east of Rwy 18-36. When local altimeter setting not received, use Fayetteville/Drake Fld altimeter setting and increase all DA 39 feet and all MDA 40 feet; increase visibility LNAV Cat C/D 1/8 mile and Circling Cat C/D 1/4 mile. Helicopter visibility reduction below 3/4 SM NA.

⚠ MISSED APPROACH: Climb to 3300 direct FITAL and hold.

AWOS-3 124.675	RAZORBACK APP CON* 126.6 305.2	SPRINGDALE TOWER* 118.2 (CTAF) 0	GND CON 121.6	REIL 18, 36 122.8 0	UNICOM 122.95
--------------------------	--	--	-------------------------	-------------------------------	-------------------------



4 NM Holding Pattern	VGSi and RNAV glidepath not coincident (VGSi Angle 3.00/TCH 40).			3300	FITAL
ZAVOR		HAPOD		RWY 36	
3800	183°	003°	003°	3000	
GP 3.00° TCH 45		3000			
		6 NM		5 NM	
CATEGORY	A	B	C	D	
LPV DA	1603-1 250 (300-1)				
LNAV MDA	1960-1 607 (700-1)		1960-1 3/4 607 (700-1 3/4)		
C CIRCLING	1960-1 607 (700-1)		2000-1 647 (700-1)		2020-1 3/4 667 (700-1 3/4) 2220-2 3/4 867 (900-2 3/4)

SC-1, 08 AUG 2024 to 05 SEP 2024

SC-1, 08 AUG 2024 to 05 SEP 2024