

WAAS CH <b>90419</b> <b>W24A</b>	APP CRS <b>245°</b>	Rwy Idg <b>3700</b> TDZE <b>295</b> Apt Elev <b>302</b>
--	------------------------	---

# RNAV (GPS) RWY 24

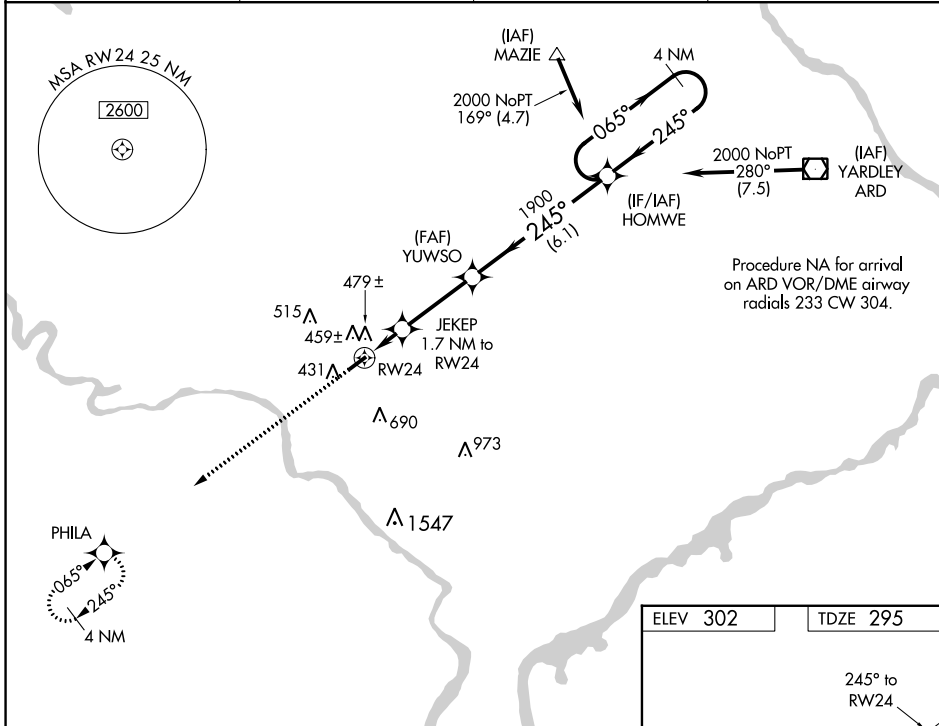
WINGS FLD (LOM)

**RNP APCH**

**⚠** Baro-VNAV NA when using Pottstown altimeter setting. For uncompensated Baro-VNAV systems, LNAV/VNAV NA below -15°C (5°F) or above 54°C (130°F). When local altimeter setting not received, use Pottstown altimeter setting and increase all DA 35 feet and all MDA 40 feet. Rwy 24 helicopter visibility reduction below 3/4 SM NA.

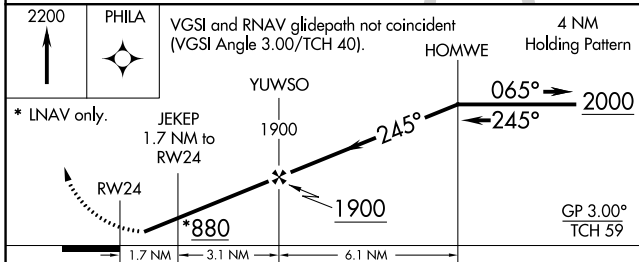
**MISSED APPROACH:** Climb to 2200 direct PHILA and hold.

AWOS-3 <b>118.925</b>	PHILADELPHIA APP CON <b>126.85 263.125</b>	CLNC DEL <b>118.55</b>	UNICOM <b>123.0 (CTAF) 0</b>
--------------------------	---	---------------------------	---------------------------------

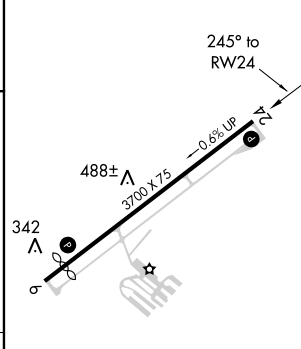


NE-4, 08 AUG 2024 to 05 SEP 2024

NE-4, 08 AUG 2024 to 05 SEP 2024



ELEV 302	TDZE 295
----------	----------



CATEGORY	A	B	C	D
LPV DA	567-1	272 (300-1)		NA
LNAV/VNAV DA	775-1 3/4	480 (500-1 3/4)		NA
LNAV MDA	740-1	445 (500-1)		NA
CIRCLING	780-1	478 (500-1)		NA

REIL Rwy 6 and 24 0  
MIRL Rwy 6-24 0