

# COPTER RNAV (GPS) 069°

AL-5176 [USA]

LOWE AHP (KLOR)

APCH CRS <b>069°</b>	Rwy Idg TDZE Arprt Elev	N/A N/A <b>294</b>
-------------------------	-------------------------------	--------------------------

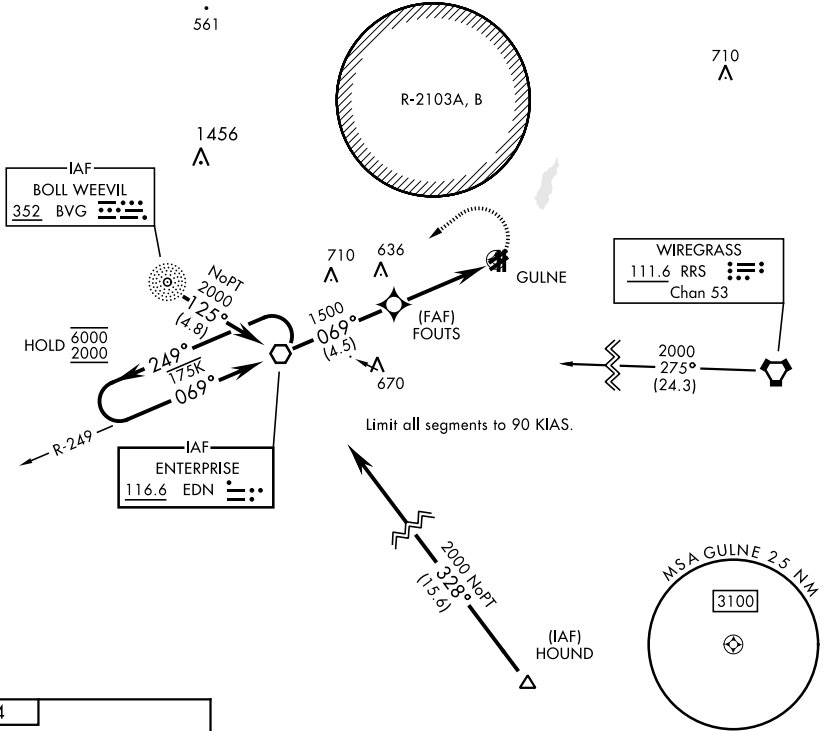
RNP APCH-GPS

▼ When local altimeter setting not received, use Cairns AAF altimeter setting.  
Visibility reduction by helicopters NA.

MISSED APPROACH: Climbing left turn to 2000 direct to EDN VOR and hold.

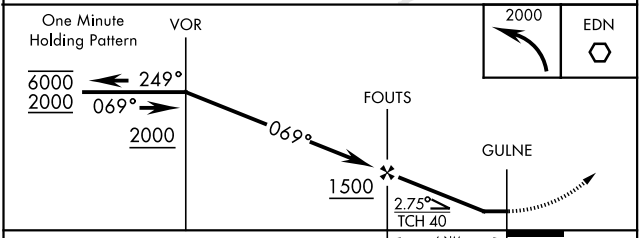
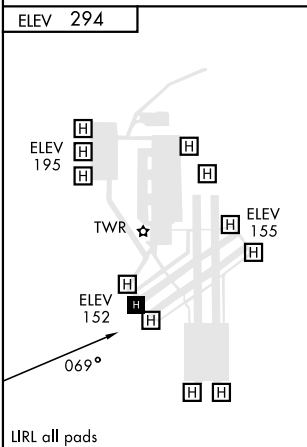
ATIS <b>361.1</b>	CAIRNS APP CON <b>133.45 239.275</b>	LOWE TOWER ★ <b>141.3 289.15</b>	GND CON <b>357.15</b>
----------------------	---	-------------------------------------	--------------------------

**NOT FOR CIVIL USE**



SE-4, 08 AUG 2024 to 05 SEP 2024

SE-4, 08 AUG 2024 to 05 SEP 2024



CATEGORY	COPTER		
LNAV-MDA	840-1	546	(600-1)
CAIRNS AAF ALTIMETER SETTING MINIMUMS			
LNAV-MDA	860-1	566	(600-1)

# COPTER RNAV (GPS) 069°