

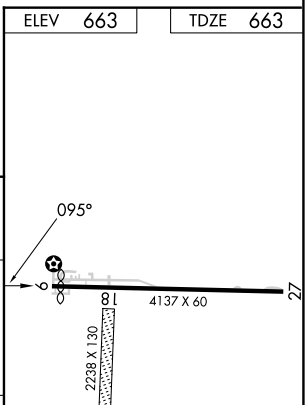
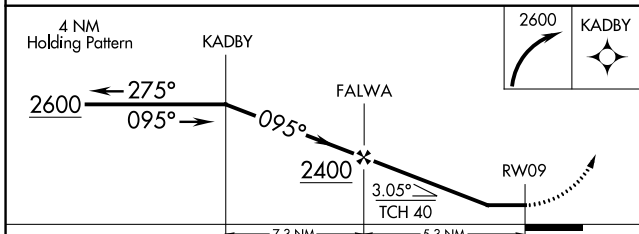
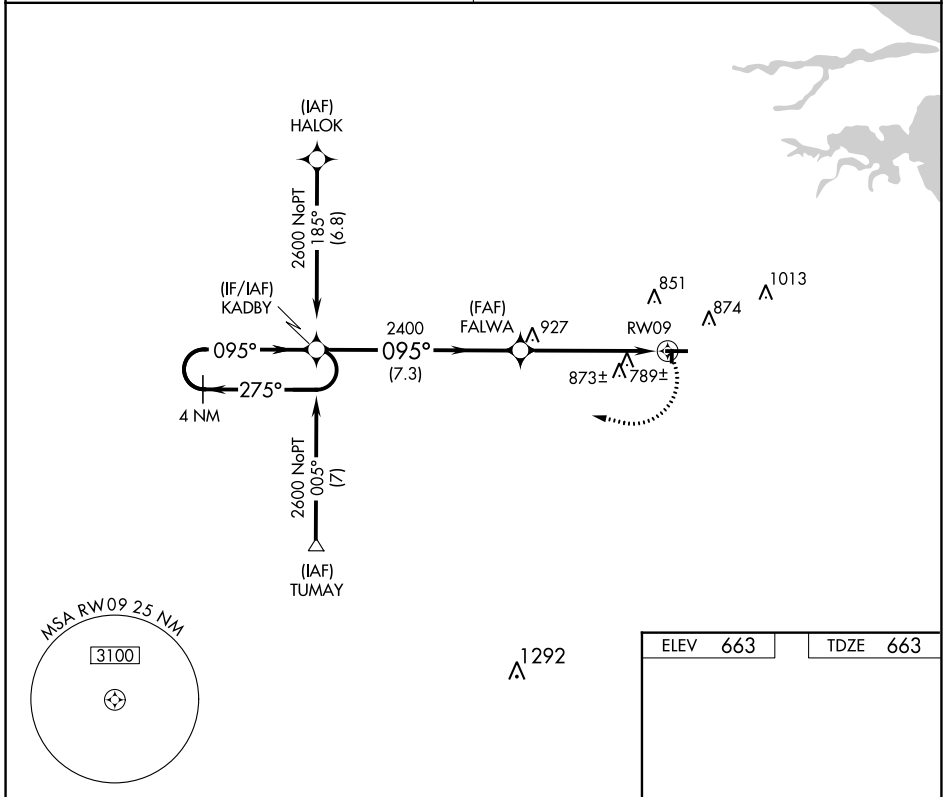
| | | |
|-------------|----------|-------------|
| APP CRS | Rwy Idg | 4011 |
| 095° | TDZE | 663 |
| | Apt Elev | 663 |

RNAV (GPS) RWY 9

FREMONT (14G)

| | |
|---|---|
| RNP APCH. | MISSED APPROACH: Climbing right turn to 2600 direct KADBY and hold. |
| <p>Procedure NA at night. Use Sandusky County Rgnl altimeter setting; when not received use Toledo Executive altimeter setting; increase all MDA 40 feet and LNAV Cat D and Circling Cat C and D visibility ¼ SM. Rwy 9 helicopter visibility reduction below 1 SM NA. Circling NA to Rwys 18-36.</p> | |

| | |
|--------------------|-----------------------|
| TOLEDO APP CON | UNICOM |
| 126.1 307.0 | 122.8 (CTAF) 0 |



| CATEGORY | A | B | C | D |
|----------|--------|-------------|-------------------------|-------------------------|
| LNAV MDA | 1080-1 | 417 (500-1) | 1080-1¼ | 417 (500-1¼) |
| CIRCLING | 1240-1 | 577 (600-1) | 1240-1½ 577 (600-1½) | 1380-2¼ 717 (800-2¼) |

LURL Rwy 9-27 0*

EC-2, 08 AUG 2024 to 05 SEP 2024

EC-2, 08 AUG 2024 to 05 SEP 2024