


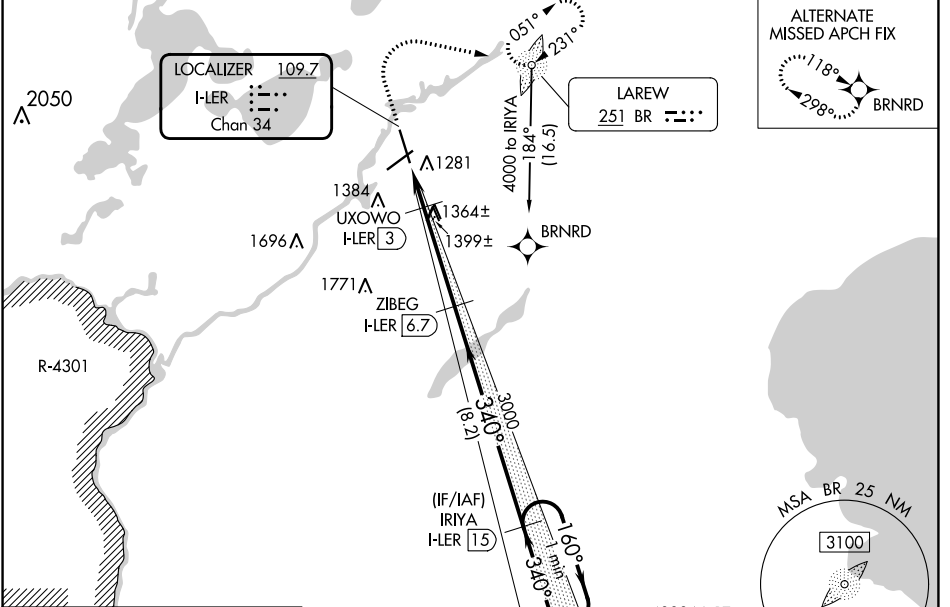
LOC/DME I-LEr	APP CRS	Rwy Idg	7100
109.7	340°	TDZE	1232
Chan 34		Apt Elev	1232

ILS or LOC/DME RWY 34

BRainerd LAKES RGNL (BRD)

DME required. ADF required. RNP APCH-GPS. from GOLLF.	MALSR	<p>MISSED APPROACH: Climb to 1700 then climbing right turn to 4000 direct BR LOM, continue climb-in-hold to 4000.</p> 
<p>VDP NA with Aikin altimeter setting. When local altimeter setting not received, use Aikin altimeter setting: increase all DA to 1484;</p> <p>NA increase all MDAs 60 feet and visibility S-LOC 34 Cat C/D ¼ SM and visibility Circling Cat D ¼ SM.</p>		

ASOS 126.775	MINNEAPOLIS CENTER 118.05 239.0	UNICOM 122.7(CTAF) 0
------------------------	---	--------------------------------

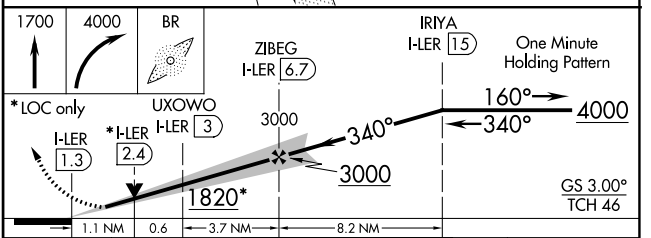
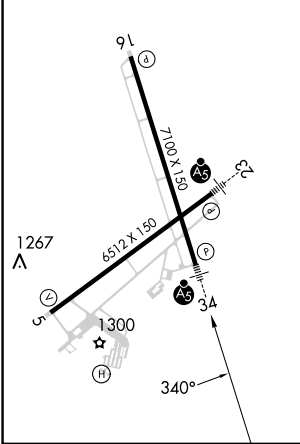


NC-1, 08 AUG 2024 to 05 SEP 2024

NC-1, 08 AUG 2024 to 05 SEP 2024

ELEV 1232	TDZE 1232
-----------	-----------

HIRL Rwy 5-23 and 16-34
REIL Rwy 5 and 16



CATEGORY	A	B	C	D
S-ILS 34		1432-½	200 (200-½)	
S-LOC 34	1620-½	388 (400-½)	1620-⅝	388 (400-⅝)
C CIRCLING	1760-1	528 (600-1)	1760-1½	1860-2 628 (700-2)