

WAAS CH <b>82018</b> <b>W05A</b>	APP CRS <b>050°</b>	Rwy Idg TDZE Apt Elev	<b>6512</b> <b>1224</b> <b>1232</b>
--	------------------------	-----------------------------	---

# RNAV (GPS) RWY 5

BRAINERD LAKES RGNL (BRD)

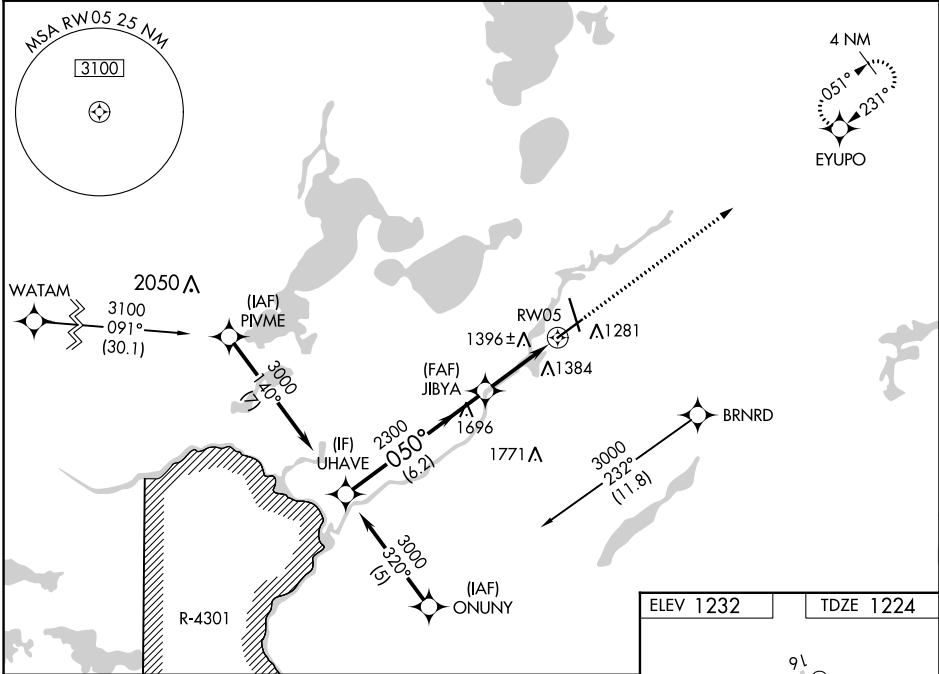
**⚠** Baro-VNAV NA when using Aikiri altimeter setting. DME/DME RNP-0.3 NA. Procedure NA when R-4301 is active. For uncompensated Baro-VNAV systems, LNAV/VNAV NA below -17°C (2°F) or above 54°C (130°F). When local altimeter setting not received, use Aikiri altimeter setting and increase all DA 52 feet and all MDA 60 feet, increase LPV and LNAV/VNAV visibility ¼ mile all Cats, and LNAV Cats C and D visibility ¼ mile. VDP NA with Aikiri altimeter setting.

MISSED APPROACH: Climb to 3000 direct EYUPO and hold.

ASOS  
**126.775**

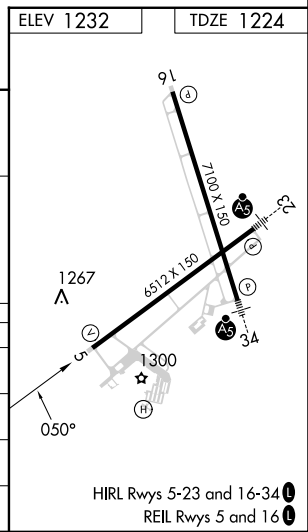
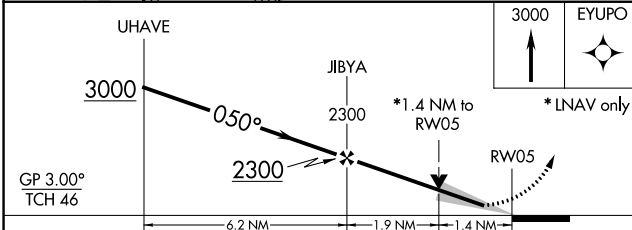
MINNEAPOLIS CENTER  
**118.05 239.0**

UNICOM  
**122.7(CTAF) 0**



NC-1, 08 AUG 2024 to 05 SEP 2024

NC-1, 08 AUG 2024 to 05 SEP 2024



CATEGORY	A	B	C	D
LPV DA	1424-3/4		200 (200-3/4)	
LNAV/VNAV DA	1777-2		553 (600-2)	
LNAV MDA	1700-1	476 (500-1)	1700-1 1/2 476 (500-1 1/2)	1700-1 1/2 476 (500-1 1/2)
<b>C</b> CIRCLING	1760-1	528 (600-1)	1760-1 1/2 528 (600-1 1/2)	1860-2 628 (700-2)