

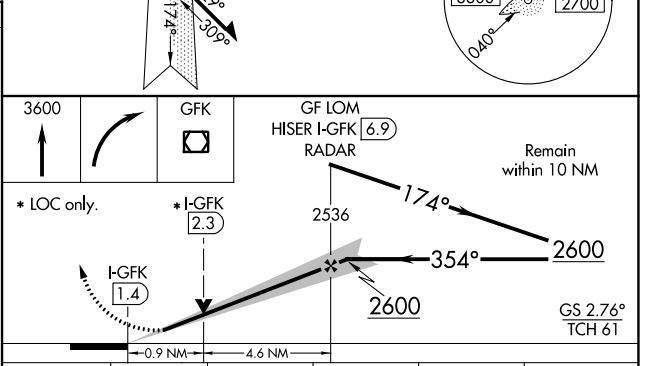
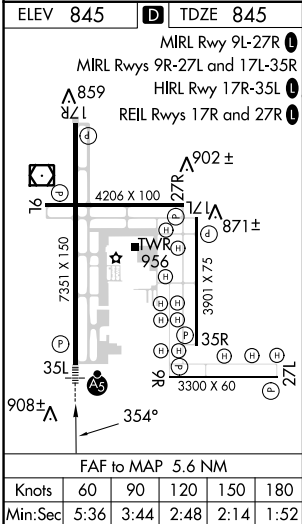
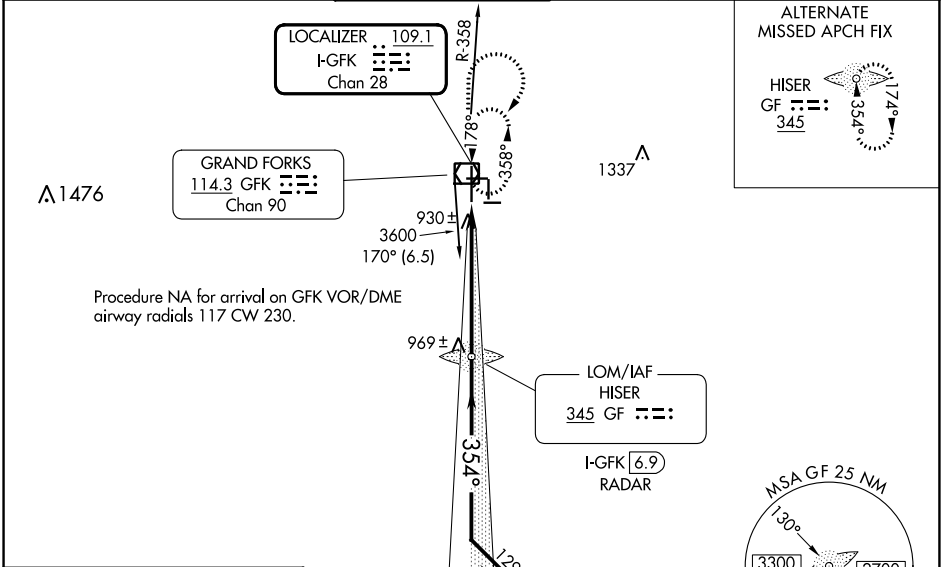
LOC/DME I-GFK <b>109.1</b> Chan 28	APP CRS <b>354°</b>	Rwy Idg <b>7351</b> TDZE <b>845</b> Apt Elev <b>845</b>
--	------------------------	---

# ILS or LOC RWY 35L

GRAND FORKS INTL (GFK)

ADF or DME or RADAR REQUIRED.			<b>MISSED APPROACH:</b> Climb to 3600 then right turn direct GFK VOR/DME and hold.
<p>VDP NA with Crookston altimeter setting. When local altimeter setting not received, use Crookston altimeter setting and increase DA to 1107 feet and all MDA 80 feet; increase S-LOC 35L Cats C/D/E visibility to RVR 4000 and Circling Cats C and E visibility ¼ SM. For inop ALS, increase S-ILS 35L Cat E visibility to RVR 4000 and S-LOC 35L Cat E visibility to RVR 5000. For inop ALS when using Crookston altimeter setting, increase S-ILS 35L all Cats visibility to RVR 4500 and S-LOC 35L Cat C/D/E visibility to RVR 6000. Procedure turn NA for Cat E aircraft, Radar required.</p>			

ATIS <b>119.4</b>	GRAND FORKS APP CON * <b>118.1 318.1</b>	GRAND FORKS TOWER* <b>118.4 (CTAF) 350.35</b>	GND CON <b>124.575</b>	CLNC DEL <b>135.725</b>	UNICOM <b>122.95</b>
----------------------	---	--	---------------------------	----------------------------	-------------------------



NC-1, 08 AUG 2024 to 05 SEP 2024

NC-1, 08 AUG 2024 to 05 SEP 2024