

LOC/DME I-GKY 111.55 Chan 52 (Y)	APP CRS 342°	Rwy Idg 6080 TDZE 620 Apt Elev 628
---	------------------------	---

ILS or LOC/DME RWY 34

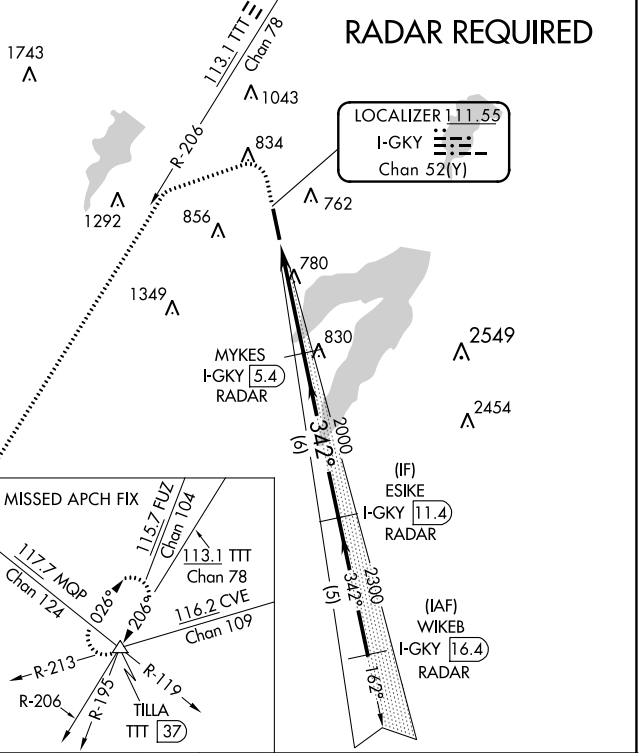
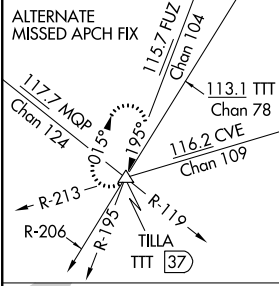
ARLINGTON MUNI (GKY)

When local altimeter setting not received, use Grand Prairie Muni altimeter setting. Inop table does not apply to S-ILS 34.
 For inop MALSRS increase S-LOC 34 Cat A, B visibility to 1 mile.



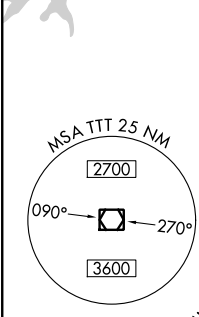
MISSED APPROACH: Climb to 1100 then climbing left turn to 3000 via heading 245° and TTT VOR/DME R-206 to TILLA INT/TTT 37 DME and hold.

ASOS 127.375	REGIONAL APP CON 135.975 379.9	ARLINGTON TOWER ★ 128.625 (CTAF)	GND CON 121.875	CLNC DEL 121.875	CLNC DEL 118.85 (When twr closed)
------------------------	--	--	---------------------------	----------------------------	--

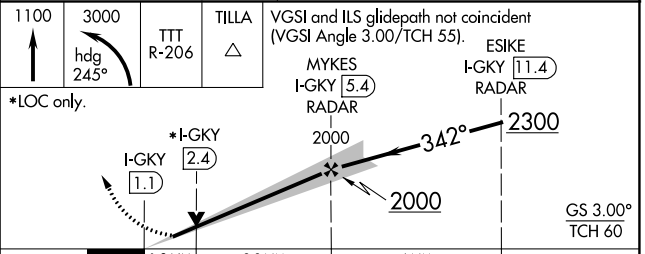
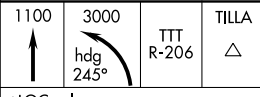
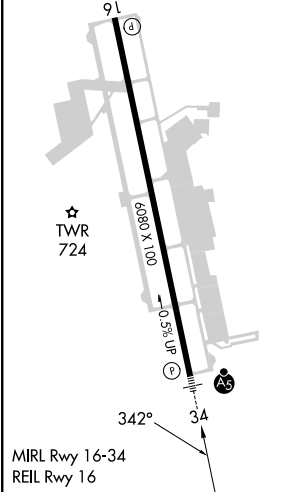


LOCALIZER 111.55
I-GKY
Chan 52(Y)

RADAR REQUIRED



ELEV 628	TDZE 620
----------	----------



CATEGORY	A	B	C	D
S-ILS 34		820-3/4	200 (200-3/4)	NA
S-LOC 34		1060-3/4	440 (500-3/4)	NA
CIRCLING	1100-1 472 (500-1)	1140-1 512 (600-1)	1220-1 1/2 592 (600-1 1/2)	NA

SC-2, 08 AUG 2024 to 05 SEP 2024

SC-2, 08 AUG 2024 to 05 SEP 2024