

WAAS CH 70712 W14A	APP CRS 144°	Rwy Idg TDZE Apt Elev	5498 726 726
--	------------------------	-----------------------------	---

RNAV (GPS) RWY 14

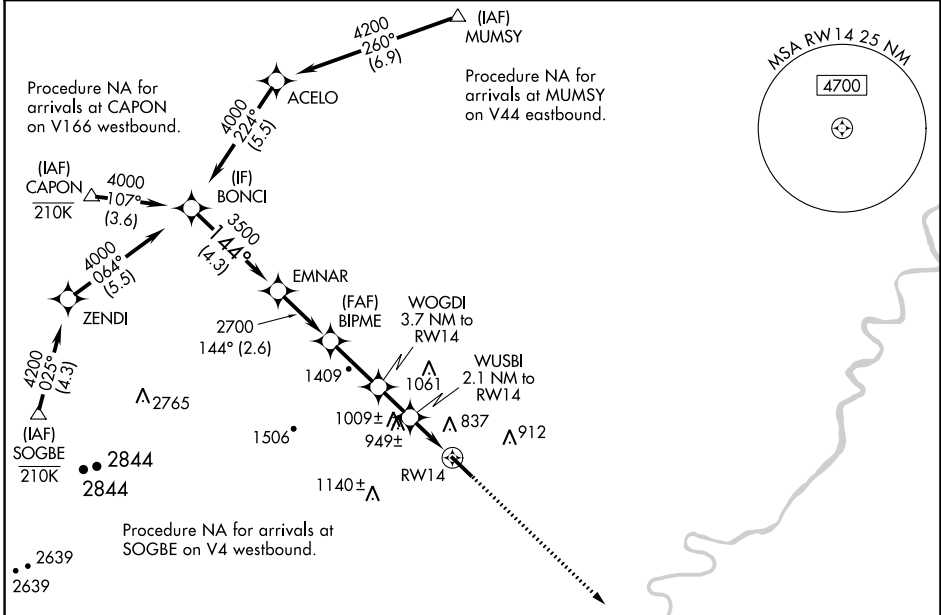
WINCHESTER RGNL (OKV)

RNP APCH - GPS.

⚠ Rwy 14 helicopter visibility reduction below 3/4 SM NA. For uncompensated Baro-VNAV systems, LNAV/VNAV NA below -16°C or above 54°C.

MISSED APPROACH:
Climb to 3700 direct CLADD and hold, continue climb-in-hold to 3700.

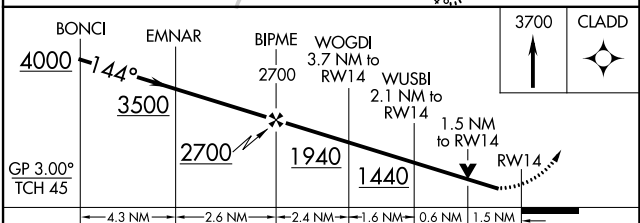
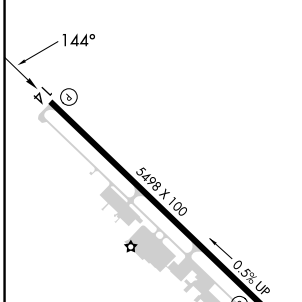
AWOS-3 124.85	POTOMAC APP CON 120.45 306.925	CLNC DEL 126.15	UNICOM 122.975 (CTAF) ①
-------------------------	--	---------------------------	-----------------------------------



NE-3, 08 AUG 2024 to 05 SEP 2024

NE-3, 08 AUG 2024 to 05 SEP 2024

ELEV 726	TDZE 726
----------	----------



CATEGORY	A	B	C	D
LPV DA		976-3/4	250 (300-3/4)	
LNAV/VNAV DA		1040-7/8	314 (400-7/8)	
LNAV MDA	1200-1	474 (500-1)	1200-1 3/8	474 (500-1 3/8)
C CIRCLING	1200-1 474 (500-1)	1220-1 494 (500-1)	1380-1 3/4 654 (700-1 3/4)	1500-2 1/2 774 (800-2 1/2)