

LOC/DME I-SFZ	APP CRS	Rwy Idg	5000
111.9	047°	TDZE	429
Chan 56		Apt Elev	441

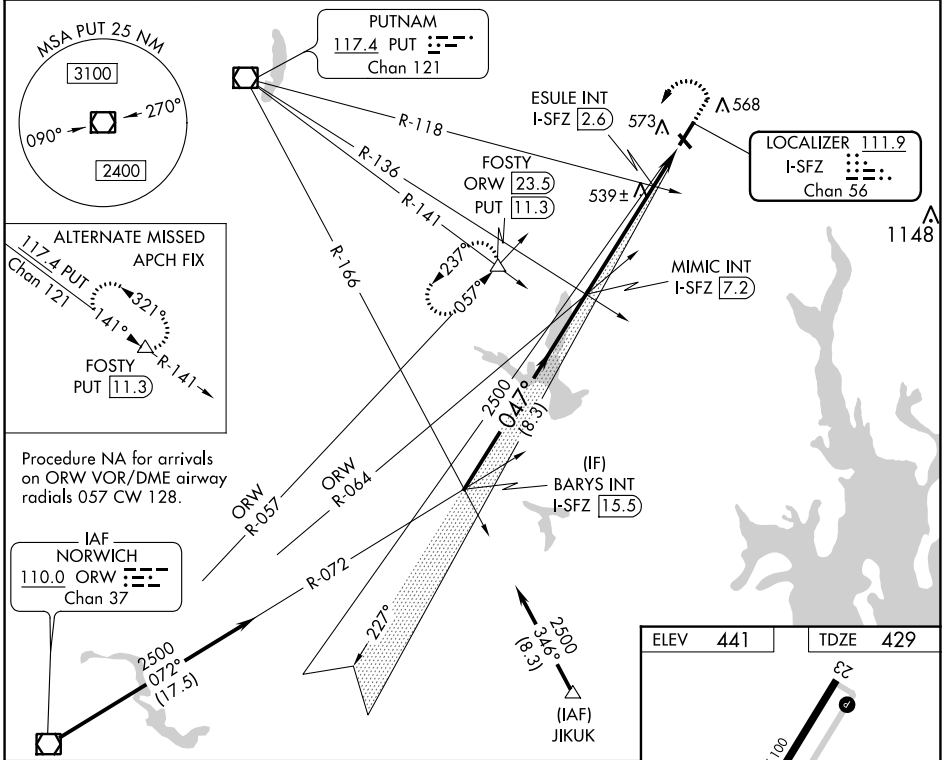
LOC RWY 5

NORTH CENTRAL STATE (SF/Z)

NA Circling Rwy 15, 33 NA at night. VDP NA with Providence altimeter setting. When local altimeter setting not received, use Providence altimeter setting and increase all MDA 100 feet; increase S-5 Cat C and Circling Cat C visibility 1/4 mile, and ESULE fix minimums S-5 Cat C visibility 1/4 mile.

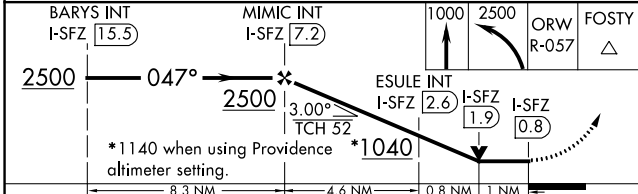
MALS MISSED APPROACH: Climb to 1000 then climbing left turn to 2500 on ORW VOR/DME R-057 to FOSTY INT/ ORW 23.5 DME and hold.

AWOS-3PT	PROVIDENCE APP CON *	CLNC DEL	UNICOM
120.775	123.675 244.875	124.35	123.075 (CTAF) 0



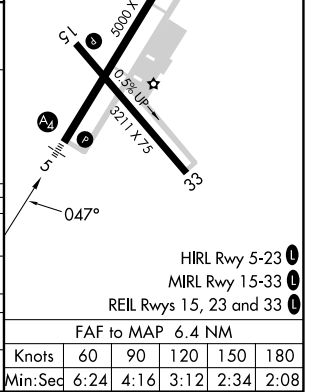
Procedure NA for arrivals on ORW VOR/DME airway radials 057 CW 128.

IAF NORWICH
110.0 ORW
Chan 37



ELEV	441	TDZE	429
------	-----	------	-----

CATEGORY	A	B	C	D
S-5	1040-3/4	611 (600-3/4)	1040-1 1/2 611 (600-1 1/2)	NA
C CIRCLING	1040-1	599 (600-1)	1040-1 3/4 599 (600-1 3/4)	NA
ESULE FIX MINIMUMS (DUAL VOR RECEIVERS OR DME REQUIRED)				
S-5	800-3/4	371 (400-3/4)	800-7/8 371 (400-7/8)	NA
C CIRCLING	900-1	459 (500-1)	900-1 1/2 459 (500-1 1/2)	NA



NE-1, 08 AUG 2024 to 05 SEP 2024

NE-1, 08 AUG 2024 to 05 SEP 2024

HIRL Rwy 5-23 0
MIRL Rwy 15-33 0
REIL Rws 15, 23 and 33 0

FAF to MAP 6.4 NM

Knots	60	90	120	150	180
Min:Sec	6:24	4:16	3:12	2:34	2:08