

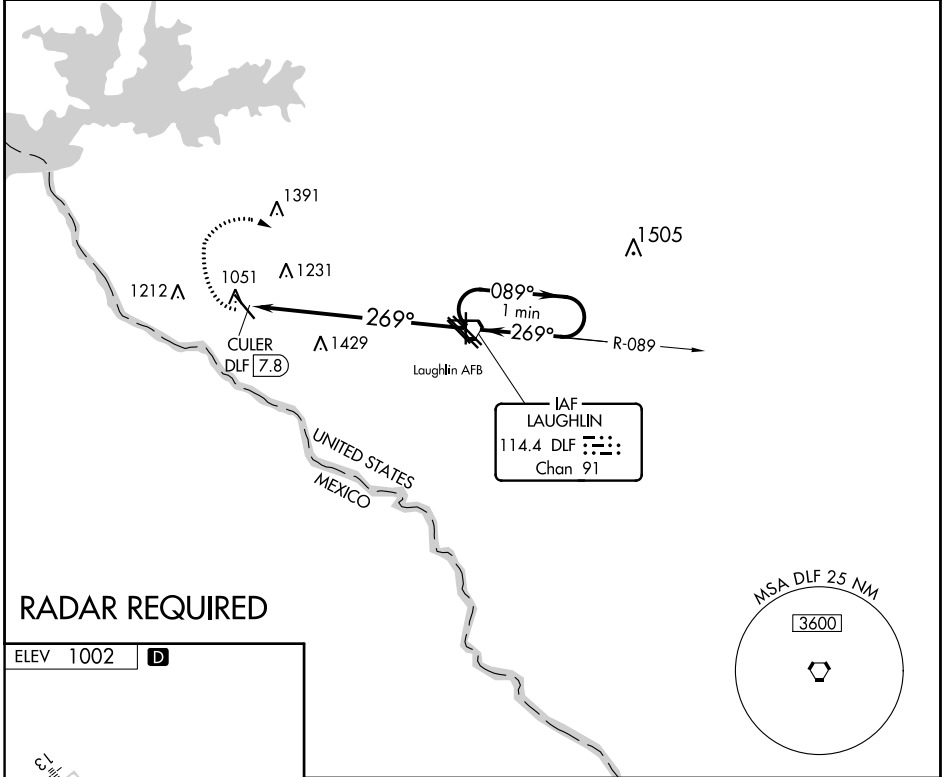
VORTAC DLF 114.4 Chan 91	APP CRS 269°	Rwy Idg TDZE Apt Elev 1002	N/A N/A 1002
--	------------------------	--	---------------------------

VOR-A
DEL RIO INTL (DRT)

⚠ Circling NA for Cat D SW of Rwy 13-31. If local altimeter setting not received, use Laughlin AFB altimeter setting and increase all MDAs 40 feet.

⚠ MISSED APPROACH: Climbing right turn to 4000 via heading 340° then right turn direct DLF VORTAC and hold.

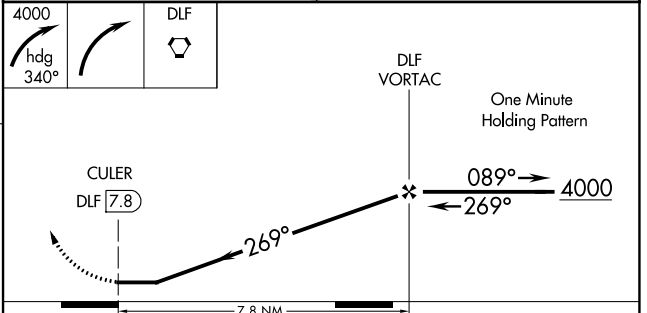
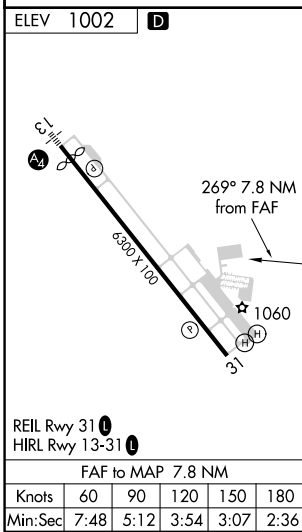
ASOS 118.525	DEL RIO APP CON * 119.6 259.1	CLNC DEL 120.5	UNICOM 122.8 (CTAF) 0
------------------------	---	--------------------------	---------------------------------



SC-3, 08 AUG 2024 to 05 SEP 2024

SC-3, 08 AUG 2024 to 05 SEP 2024

RADAR REQUIRED



FAF to MAP 7.8 NM					
Knots	60	90	120	150	180
Min:Sec	7:48	5:12	3:54	3:07	2:36
CATEGORY	A	B	C	D	
C CIRCLING	1780-1 778 (800-1)	1780-1¼ 778 (800-1¼)	1780-2¼ 778 (800-2¼)	1780-2½ 778 (800-2½)	