

APP CRS	Rwy ldg	3204
032°	TDZE	11
	Apt Elev	12

RNAV (GPS) RWY 2

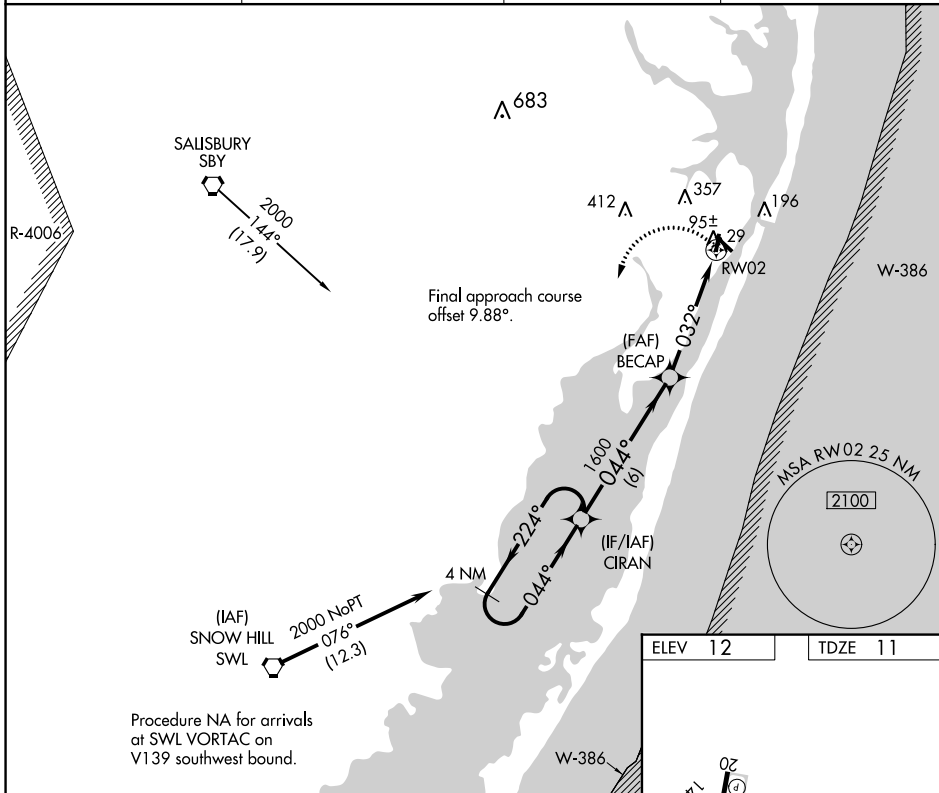
OCEAN CITY MUNI (OXB)

RNP APCH.

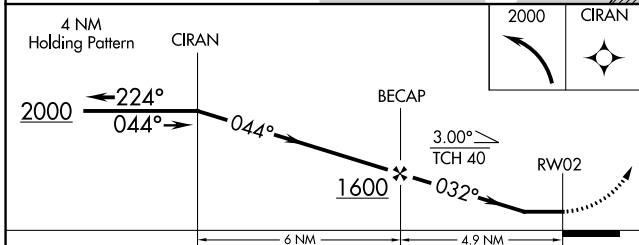
▼ When local altimeter setting not received, use Salisbury altimeter setting and increase all MDA 60 feet and visibility LNAV Cat C 1/8 SM and Circling Cat C 1/4 SM. Straight-in Rwy 2 NA at night, Circling Rwy 2, 14, 20 NA at night. Rwy 2 helicopter visibility reduction below 1 SM NA.

MISSED APPROACH: Climbing left turn to 2000 direct CIRAN and hold.

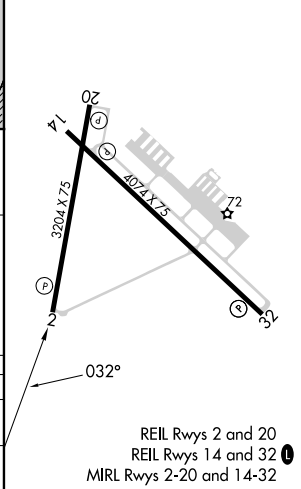
ASOS 119.025	PATUXENT APP CON * 127.95 314.0	CLNC DEL 121.75	UNICOM 123.05 (CTAF) 0
------------------------	---	---------------------------	----------------------------------



Procedure NA for arrivals at SWL VORTAC on V139 southwest bound.



ELEV 12	TDZE 11
---------	---------



CATEGORY	A	B	C	D
LNAV MDA	420-1	409 (500-1)	420-1 1/4 409 (500-1 1/4)	NA
CIRCLING	480-1 468 (500-1)	660-1 648 (700-1)	660-1 1/4 648 (700-1 1/4)	NA

NE-3, 08 AUG 2024 to 05 SEP 2024

NE-3, 08 AUG 2024 to 05 SEP 2024