

VORTAC ILA <b>114.4</b> Chan <b>91</b>	APP CRS <b>323°</b>	Rwy Idg TDZE <b>138</b> Apt Elev <b>141</b>	<b>4125</b>
----------------------------------------------	------------------------	---------------------------------------------------	-------------

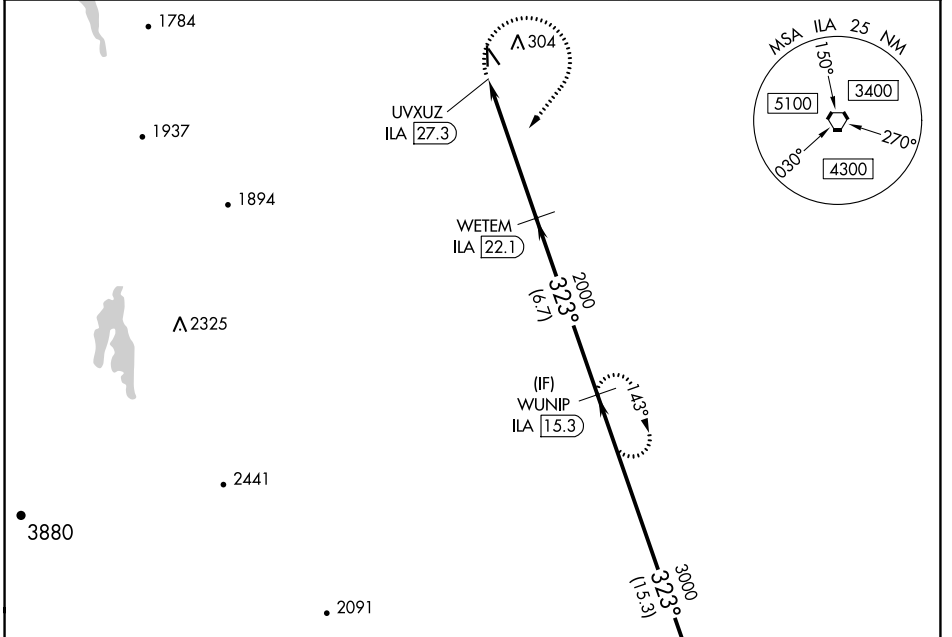
# VOR RWY 34

WILLOWS/GLENN COUNTY (WLW)

**⚠** **NA** When Oroville Muni altimeter setting not received, procedure NA. DME required. Use Oroville Muni altimeter setting.

MISSED APPROACH: Climbing right turn to 3000 on heading 200° and on ILA VORTAC R-323 to WUNIP/ILA 15.3 DME and hold.

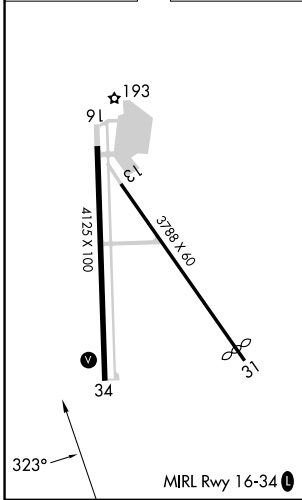
OVE ASOS <b>121.425</b>	OAKLAND CENTER <b>132.2 350.3</b>	UNICOM <b>122.8 (CTAF)</b> <b>0</b>
----------------------------	--------------------------------------	----------------------------------------



SW-2, 08 AUG 2024 to 05 SEP 2024

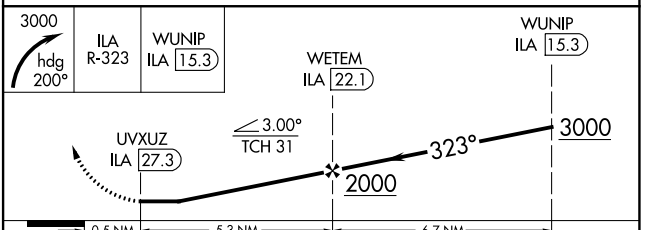
SW-2, 08 AUG 2024 to 05 SEP 2024

ELEV 141	TDZE 138
----------	----------



**DME REQUIRED**

IAF WILLIAMS  
114.4 ILA **91**  
Chan 91



	0.5 NM	5.3 NM	6.7 NM	
CATEGORY	A	B	C	D
S-34	1000-1 862 (900-1)	1000-1¼ 862 (900-1¼)	1000-2½ 862 (900-2½)	NA
<input checked="" type="checkbox"/> CIRCLING	1000-1¼	859 (900-1¼)	1000-2½ 859 (900-2½)	NA