

APP CRS <b>218°</b>	Rwy Idg <b>4000</b>
	TDZE <b>2565</b>
	Apt Elev <b>2583</b>

# RNAV (GPS) RWY 22

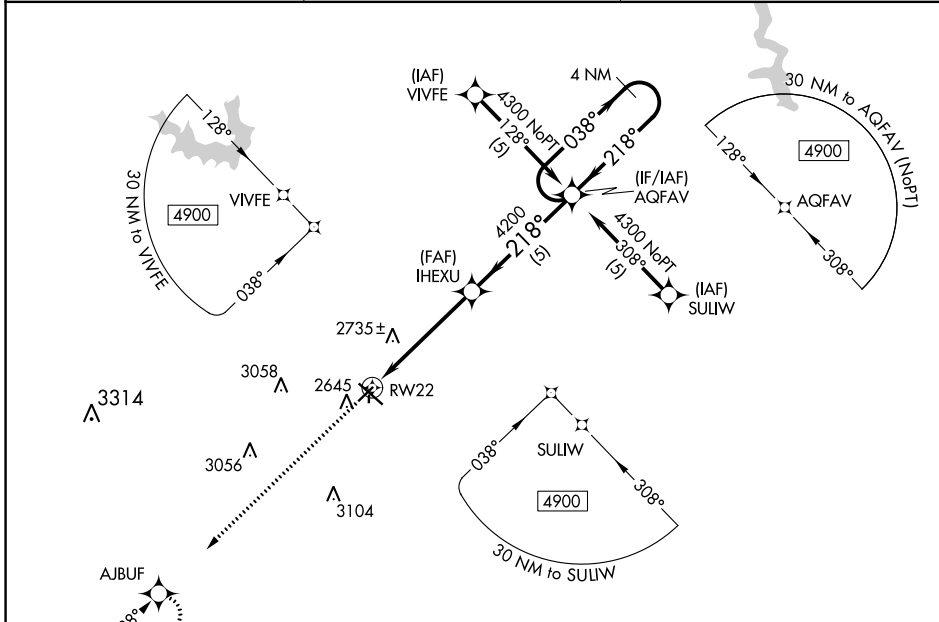
MC COOK BEN NELSON RGNL (MCK)

RNP APCH-GPS.

▼ When local altimeter setting not received, use Imperial Muni altimeter setting and increase all MDA 220 feet, increase S-22 and Circling Cat C visibility ¾ mile. VDP NA when using Imperial Muni altimeter setting. Circling NA to Rws 17 and 35.

MISSED APPROACH: Climb to 5000 via 218° course to AJBUF and hold.

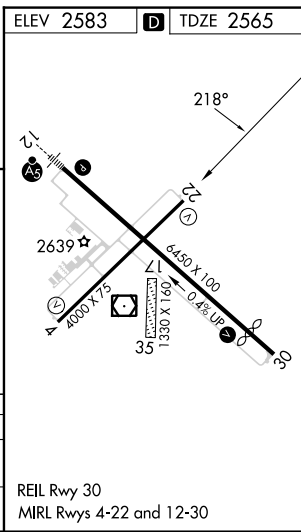
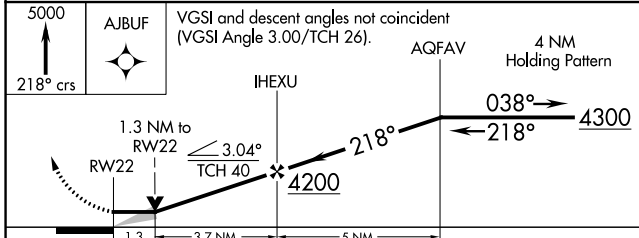
ASOS <b>119.025</b>	DENVER CENTER <b>132.7 226.675</b>	UNICOM <b>122.8 (CTAF)</b>
------------------------	---------------------------------------	-------------------------------



NC-2, 08 AUG 2024 to 05 SEP 2024

NC-2, 08 AUG 2024 to 05 SEP 2024

ELEV 2583	TDZE 2565
-----------	-----------



CATEGORY	A	B	C	D
LNVA MDA	3000-1 435 (500-1)	3000-1¼ 435 (500-1¼)	3000-1¼ 435 (500-1¼)	NA
CIRCLING	3040-1 457 (500-1)	3120-1 537 (600-1)	3360-2¼ 777 (800-2¼)	NA

REIL Rwy 30  
MIRL Rws 4-22 and 12-30