

NDB PLX 391	APP CRS 156°	Rwy ldg TDZE Apt Elev	3398 455 461
-----------------------	------------------------	-----------------------------	---

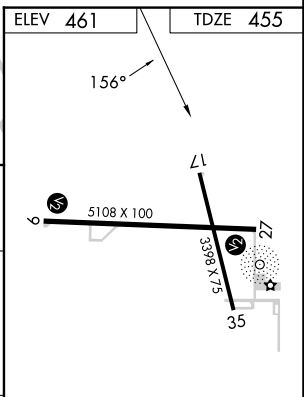
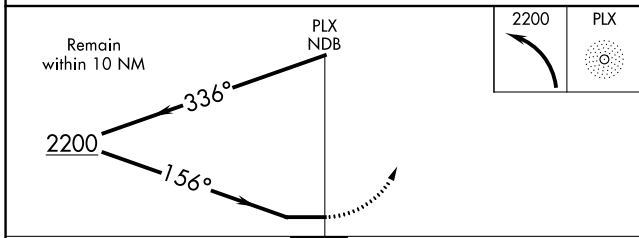
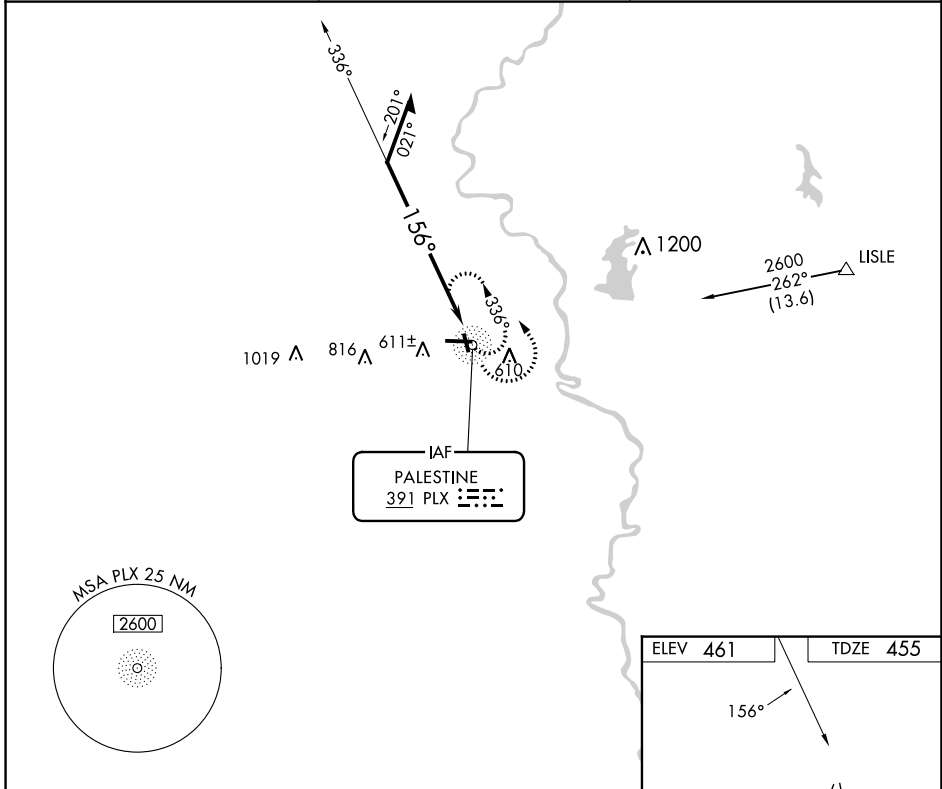
NDB RWY 17

CRAWFORD COUNTY (RSV)

▼ When local altimeter setting not received, use Terre Haute Rgnl altimeter setting and increase all MDA 100 feet; increase S-17 Cat B visibility ¼ mile and Cats C/D visibility ½ mile; increase Circling Cat B visibility ¼ mile and Cats C/D visibility ½ mile.
▲ Helicopter visibility reduction below 1 SM NA. Rwy 17 Straight-in and Circling minimums NA at night.

MISSED APPROACH:
Climbing left turn to 2200 in PLX NDB holding pattern.

AWOS-3 120.50	HULMAN APP CON 135.35 339.8	UNICOM 123.0 (CTAF) 1
-------------------------	---------------------------------------	---------------------------------



CATEGORY	A	B	C	D
S-17	1160-1	705 (700-1)	1160-2	705 (700-2)
C CIRCLING	1160-1	699 (700-1)	1160-2 699 (700-2)	1180-2¼ 719 (800-2¼)

REIL Rwy 9, 17 and 27 **1**
MIRL Rwy 9-27 and 17-35 **1**

EC-3, 08 AUG 2024 to 05 SEP 2024

EC-3, 08 AUG 2024 to 05 SEP 2024