

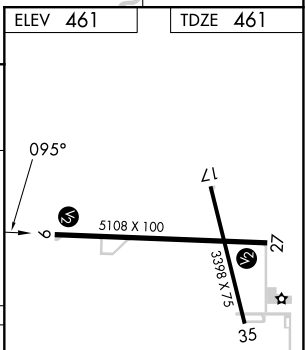
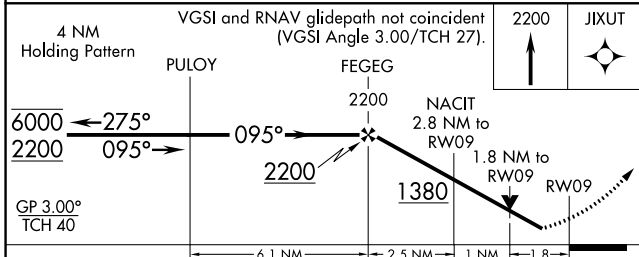
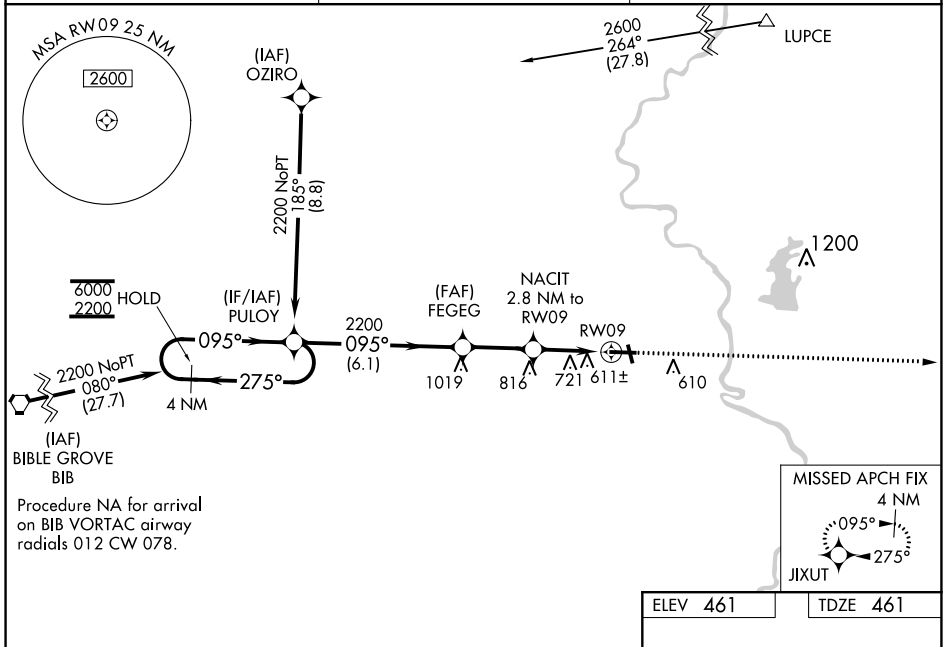
WAAS CH <b>49109</b> <b>W09A</b>	APP CRS <b>095°</b>	Rwy Idg TDZE Apt Elev	<b>5108</b> <b>461</b> <b>461</b>
--	------------------------	-----------------------------	---

# RNAV (GPS) RWY 9

CRAWFORD COUNTY (RSV)

RNP APCH - GPS.		MISSED APPROACH: Climb to 2200 direct JIXUT and hold.
⚠ ⚠	Rwy 9 helicopter visibility reduction below ¾ SM NA. For uncompensated Baro-VNAV systems, LNAV/VNAV NA below -15° C or above 54° C.	

AWOS-3 <b>120.50</b>	HULMAN APP CON <b>135.35 339.8</b>	UNICOM <b>123.0 (CTAF)</b> <b>1</b>
-------------------------	---------------------------------------	--



CATEGORY	A	B	C	D
LPV DA	805-1 3/8 344 (400-1 1/8)			
LNAV/VNAV DA	1103-2 1/2 642 (700-2 1/2)			
LNAV MDA	1040-1 579 (600-1)	1040-1 5/8 579 (600-1 1/8)		
CIRCLING	1040-1 579 (600-1)	1080-1 619 (700-1)	1120-1 3/4 659 (700-1 3/4)	1180-2 1/4 719 (800-2 1/4)

REIL Rwy 17, 9 and 27 **1**  
MRL Rwy 9-27 and 17-35 **1**

EC-3, 08 AUG 2024 to 05 SEP 2024

EC-3, 08 AUG 2024 to 05 SEP 2024