

| | | | |
|--|------------------------|-----------------------------|---|
| WAAS CH 72828 W02A | APP CRS 018° | Rwy Idg TDZE Apt Elev | 5000 1151 1165 |
|--|------------------------|-----------------------------|---|

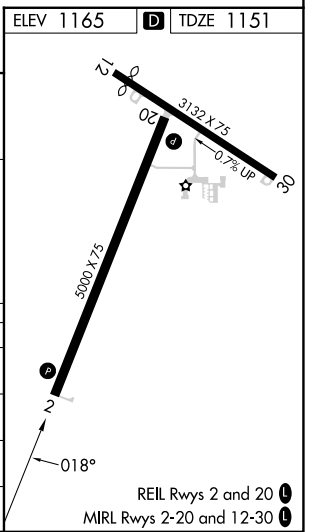
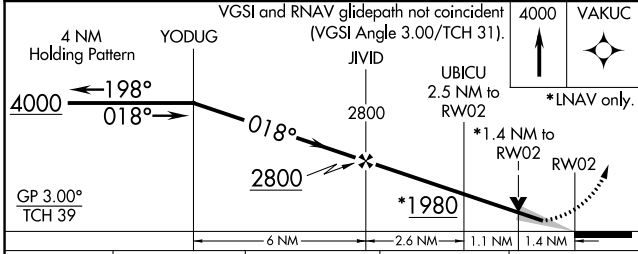
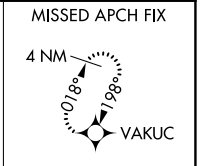
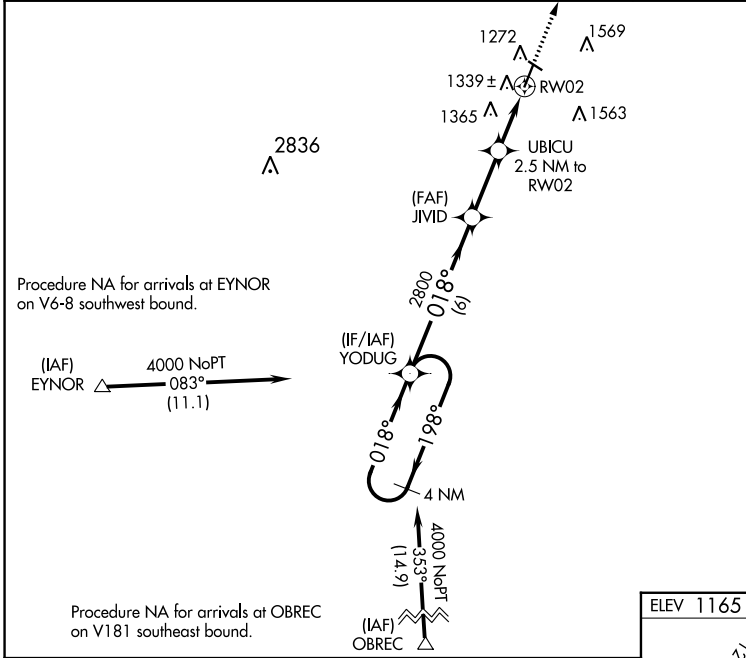
RNAV (GPS) RWY 2

ATLANTIC MUNI (AIO)

⚠ DME/DME RNP -0.3 NA. Baro-VNAV and VDP NA when using Harlan altimeter setting. For uncompensated Baro-VNAV systems, LNAV/VNAV NA below -17°C (2°F) or above 54°C (130°F). When local altimeter setting not received, use Harlan altimeter setting: increase LPV DA to 1450 feet and all visibilities 1/8 SM; increase LNAV/VNAV DA to 1563 feet and all visibilities 1/8 SM; increase all MDAs 60 feet, and LNAV visibility Cat C 1/8 SM and Circling visibility Cat B/C 1/4 SM. Circling Rwy 12, 30 NA at night.

MISSED APPROACH:
Climb to 4000 direct VAKUC and hold.

| | | |
|--------------------------|--|-------------------------------|
| AWOS-3 127.825 | MINNEAPOLIS CENTER 119.6 290.4 | UNICOM 122.7 (CTAF) |
|--------------------------|--|-------------------------------|



| CATEGORY | A | B | C | D |
|--------------|-----------------------|-----------------------|-------------------------------|----|
| LPV DA | 1401-7/8 | 250 (300-7/8) | | NA |
| LNAV/VNAV DA | 1514-1 1/4 | 363 (400-1 1/4) | | NA |
| LNAV MDA | 1620-1 | 469 (500-1) | 1620-1 3/8 469 (500-1 3/8) | NA |
| CIRCLING | 1760-1 595 (600-1) | 1920-1 755 (800-1) | 1920-2 1/4 755 (800-2 1/4) | NA |

NC-3, 08 AUG 2024 to 05 SEP 2024

NC-3, 08 AUG 2024 to 05 SEP 2024