

WAAS CH 53304 W01A	APP CRS 010°	Rwy Idg 5010 TDZE 979 Apt Elev 979
--	------------------------	---

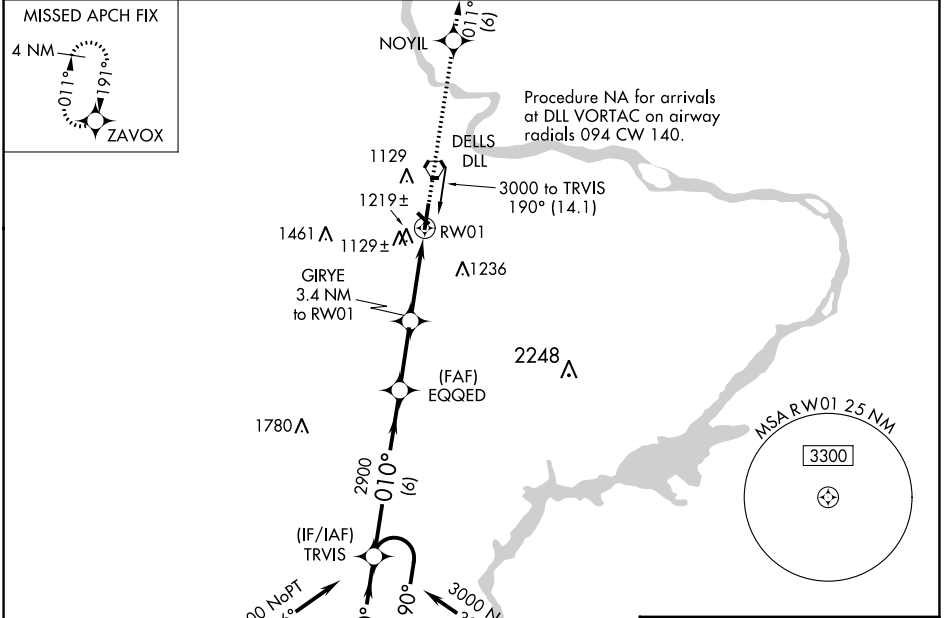
RNAV (GPS) RWY 1

BARABOO/WISCONSIN DELLS RGNL (DLL)

⚠ Baro-VNAV NA when using Lone Rock altimeter setting. For uncompensated Baro-VNAV systems, LNAV/VNAV NA below -22°C (-7°F) or above 54°C (130°F). DME/DME RNP-0.3 NA. When local altimeter setting not received, use Lone Rock altimeter setting and increase all DA 97 feet/MDA 100 feet. Increase LPV all Cats visibility 1/8 mile, LNAV/VNAV all Cats visibility 3/8 mile, LNAV Cat C visibility 3/8 mile, and Circling Cat C visibility 1/2 mile. Circling NA to Rwy 14-32. Rwy 1 helicopter visibility reduction below 3/4 SM NA.

MISSED APPROACH: Climb to 3000 direct NOYIL and on track 011° to ZAVOX and hold.

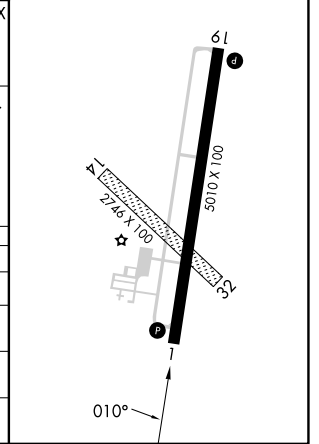
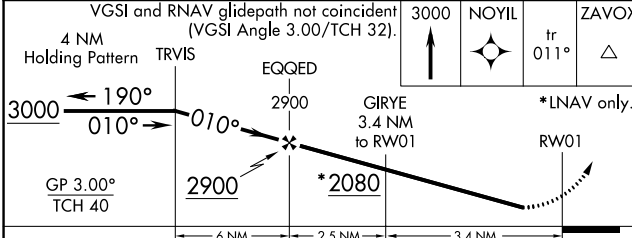
AWOS-3 118.325	MADISON APP CON* 135.45 343.7	UNICOM 123.05 (CTAF)
--------------------------	---	--------------------------------



EC-3, 08 AUG 2024 to 05 SEP 2024

EC-3, 08 AUG 2024 to 05 SEP 2024

ELEV 979	TDZE 979
MIRL Rwy 1-19	REIL Rwys 1 and 19



CATEGORY	A	B	C	D
LPV DA	1229-1	250 (300-1)		NA
LNAV/VNAV DA	1391-1 3/8	412 (500-1 3/8)		NA
LNAV MDA	1480-1 501 (600-1)		1480-1 3/8 501 (600-1 3/8)	NA
C CIRCLING	1520-1 541 (600-1)		1580-1 3/4 601 (700-1 3/4)	NA