

APP CRS	Rwy Idg	5002
171°	TDZE	1484
	Apt Elev	1488

RNAV (GPS) RWY 17

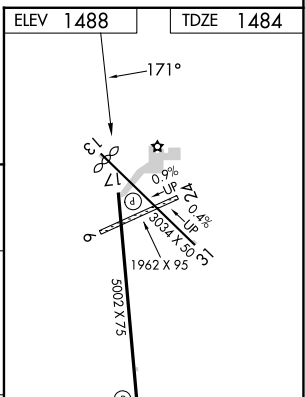
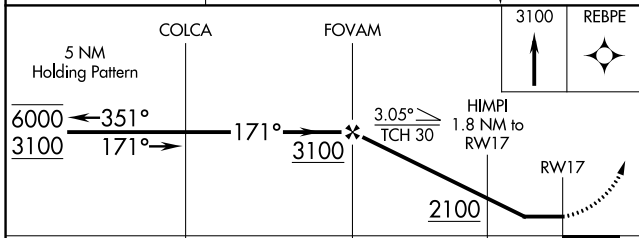
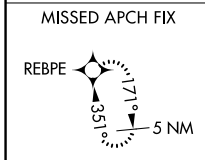
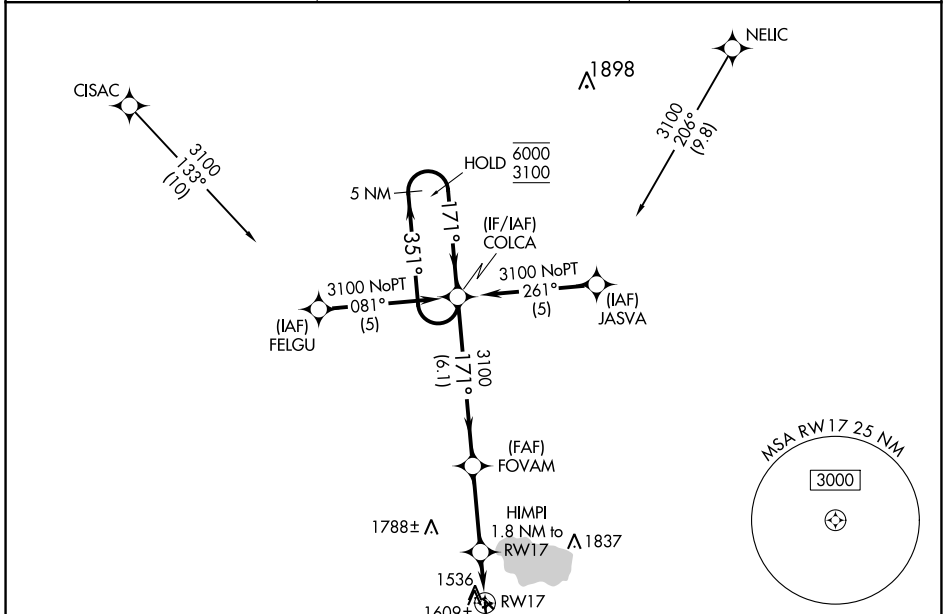
STORM LAKE MUNI (SLB)

RNP APCH - GPS.

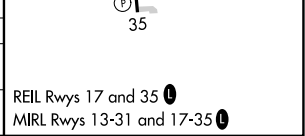
⚠ Circling NA to Rwys 6 and 24. Rwy 17 helicopter visibility reduction below 1 SM NA. Straight-in Rwy 17 NA at night, Circling Rwy 13, 17 NA at night.

MISSED APPROACH: Climb to 3100 direct REBPE and hold.

AWOS-3 118.525	MINNEAPOLIS CENTER 134.0 288.3	UNICOM 122.7 (CTAF) 0
--------------------------	--	---------------------------------



CATEGORY	A	B	C	D
LNVA MDA	1860-1	376 (400-1)	NA	
CIRCLING	1920-1 432 (500-1)	1940-1 452 (500-1)	NA	



NC-3, 08 AUG 2024 to 05 SEP 2024

NC-3, 08 AUG 2024 to 05 SEP 2024