

# MAYNR TWO DEPARTURE (RNAV)

SE-3, 08 AUG 2024 to 05 SEP 2024

MIAMI DEP CON  
125.5 354.1  
ATIS  
124.0  
CLNC DEL  
133.0  
GND CON  
121.7  
MIAMI EXEC TOWER \*  
118.9 (CTAF)

RNAV1 - DME/DME/IRU or GPS.  
From SUIPT to MAXIM: RNAV 1 - GPS.  
From SUIPT to CANOA: RNAV 1 - GPS.  
RADAR required.

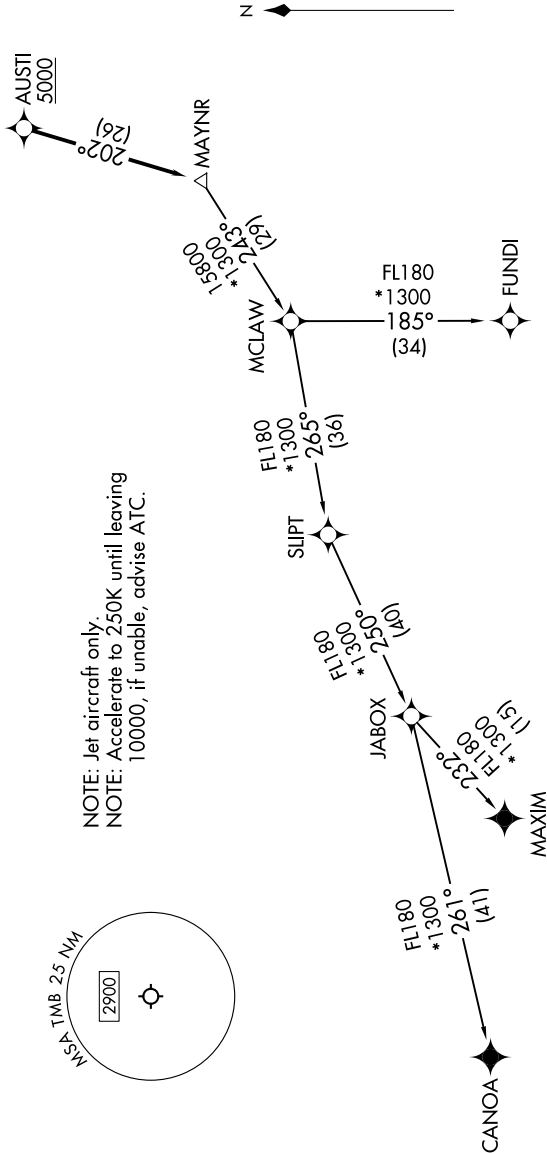
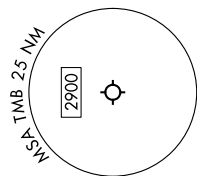
**TOP ALTITUDE:  
ASSIGNED BY ATC**



### TAKEOFF MINIMUMS

- Rwy 9L: Standard with minimum climb of 500'/NM to 1300.
- Rwy 9R: Standard with minimum climb of 500'/NM to 1500.
- Rwy 13: Standard with minimum climb of 500'/NM to 1800.
- Rwy 27L: Standard with minimum climb of 500'/NM to 1900.
- Rwy 27R: Standard with minimum climb of 500'/NM to 1700.
- Rwy 31: Standard with minimum climb of 500'/NM to 1400.

NOTE: Jet aircraft only.  
NOTE: Accelerate to 250K until leaving  
10000, if unable, advise ATC.



(CONTINUED ON FOLLOWING PAGE)

NOTE: Chart not to scale.

SE-3, 08 AUG 2024 to 05 SEP 2024

# MAYNR TWO DEPARTURE (RNAV)