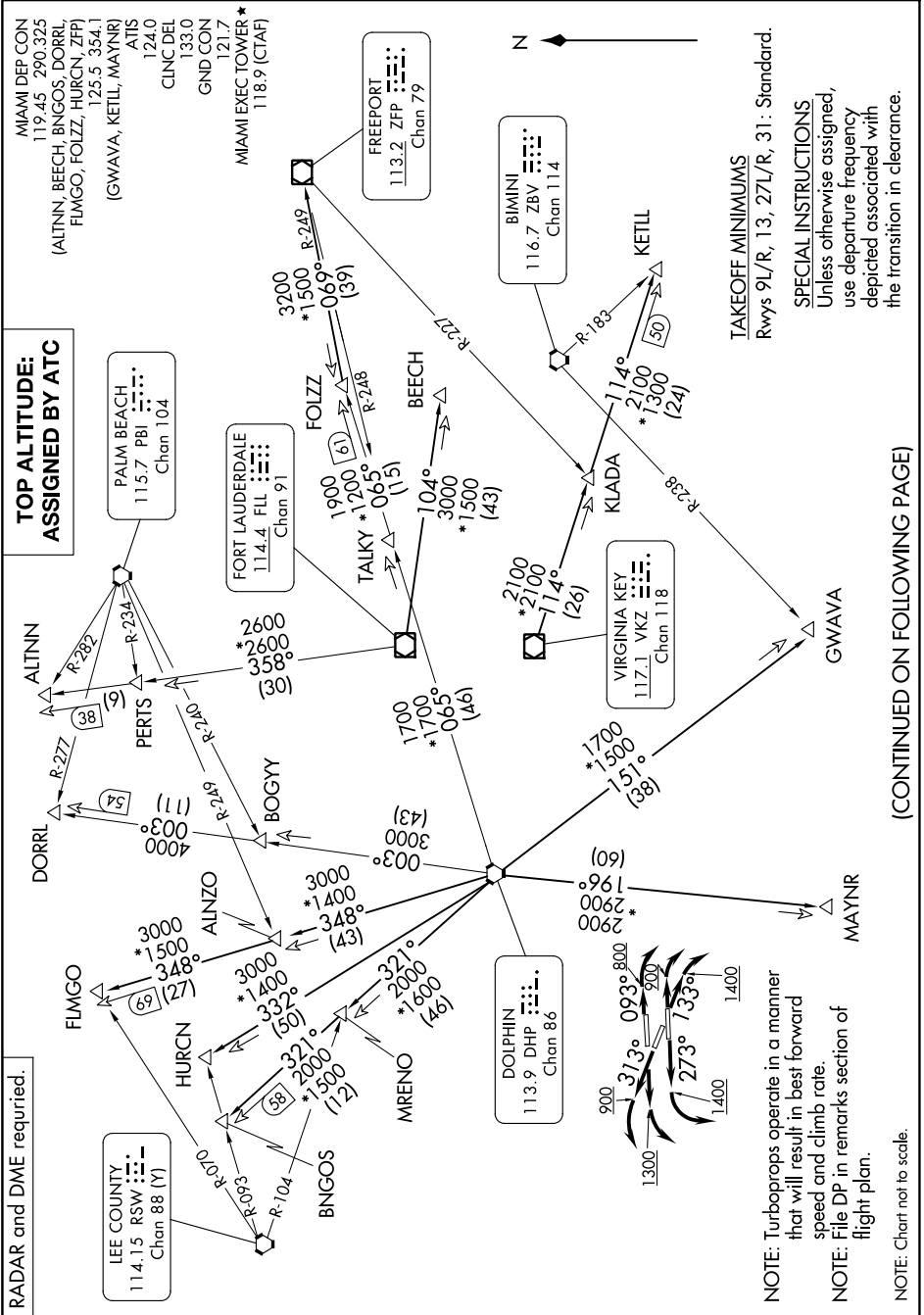


MIAMI NINE DEPARTURE

SE-3, 08 AUG 2024 to 05 SEP 2024



**TOP ALTITUDE:
ASSIGNED BY ATC**

RADAR and DME required.

LEE COUNTY
114.15 RSW
Chan 88 (Y)

PALM BEACH
115.7 PBI
Chan 104

FORT LAUDERDALE
114.4 FLL
Chan 91

DOLPHIN
113.9 DHP
Chan 86

FREEPORT
113.2 ZFP
Chan 79

VIRGINIA KEY
117.1 VKZ
Chan 118

BIMINI
116.7 ZBV
Chan 114

MIAMI EXEC TOWER*
118.9 (CTAF)

MIAMI DEP CON
119.45 290.325
(ALTNN, BEECH, BNGOS, DORRL,
FLMGO, FOLZZ, HURCN, ZFP)
125.5 354.1
(GWAVA, KETIL, MAYNIR)
ATIS
124.0
CLNC DEL
133.0
GND CON
121.7

TAKEOFF MINIMUMS
Rwys 9L/R, 13, 27L/R, 31: Standard.

SPECIAL INSTRUCTIONS
Unless otherwise assigned,
use departure frequency
depicted associated with
the transition in clearance.

NOTE: Turboprops operate in a manner
that will result in best forward
speed and climb rate.
NOTE: File DP in remarks section of
flight plan.
NOTE: Chart not to scale.

(CONTINUED ON FOLLOWING PAGE)

SE-3, 08 AUG 2024 to 05 SEP 2024

MIAMI NINE DEPARTURE