

LOC I-CKF <b>108.9</b>	APP CRS <b>104°</b>	Rwy Idg <b>5001</b>
		TDZE <b>308</b>
		Apt Elev <b>310</b>

**LOC RWY 10**  
CRISP COUNTY-CORDELE (CKF)

RNP APCH-GPS or RADAR required.

**▼** Rwy 10 helicopter visibility reduction below 1 SM NA. ADF required.  
**▲ NA** Circling Rwy 28 NA at night. When local altimeter setting not received, use Albany altimeter setting and increase all MDA 100 feet and increase S-10 Cat C/D visibility 1/8 SM and Circling Cat C/D visibility 1/4 SM. Inop table does not apply to S-10. Inop table does not apply to S-10 Cat A/B when using Albany altimeter setting. For inop ALS, when using Albany altimeter setting increase S-10 Cat C/D visibility to 1 3/8 SM.

ODALS

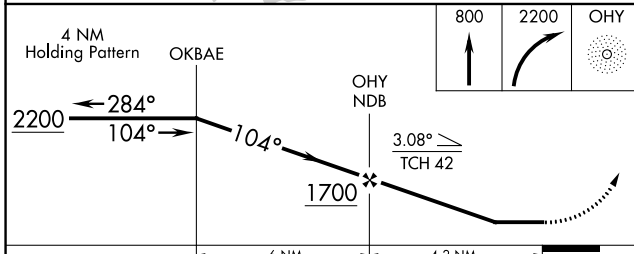
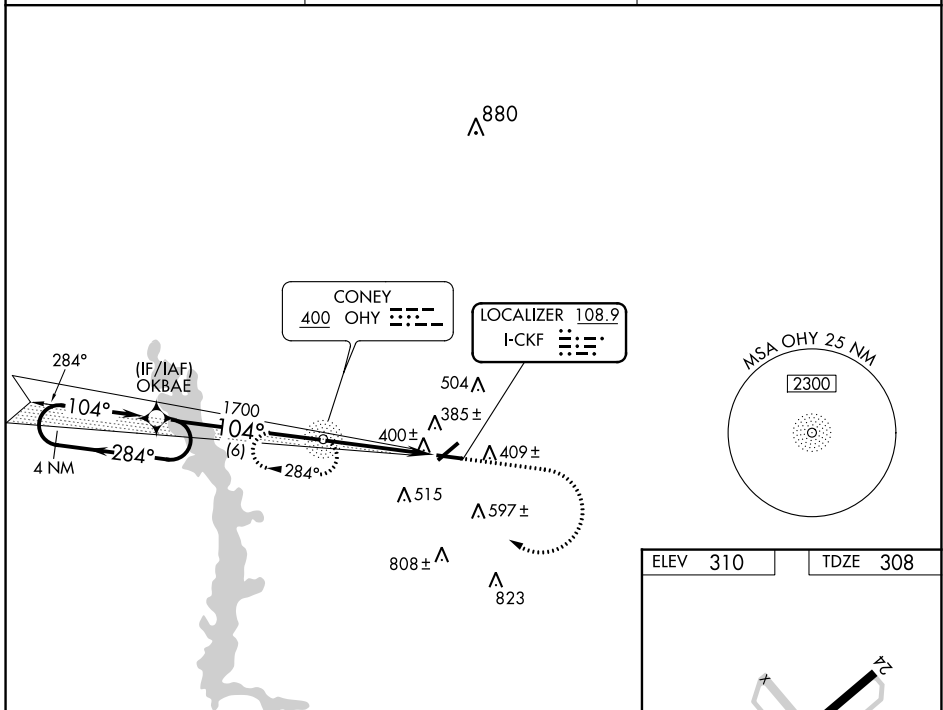


**MISSED APPROACH:** Climb to 800 then climbing right turn to 2200 direct OHY NDB and hold, continue climb-in-hold to 2200.

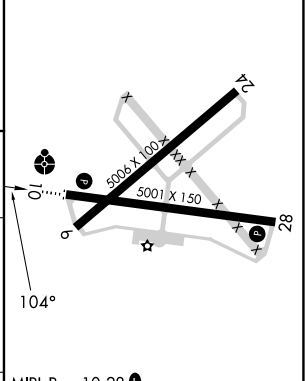
AWOS-3PT  
**119.325**

JACKSONVILLE CENTER  
**125.75 363.075**

UNICOM  
**123.050 (CTAF) 1**



ELEV 310	TDZE 308
----------	----------



CATEGORY	A	B	C	D	MRL Rwy 10-28 1	
S-10		660-1	352 (400-1)		REIL Rwys 10 and 28 1	
					FAF to MAP 4.2 NM	
<b>C</b> CIRCLING	820-1	510 (600-1)	1080-2 1/4 770 (800-2 1/4)	1160-2 3/4 850 (900-2 3/4)		
	Knots	60	90	120	150	180
	Min:Sec	4:12	2:48	2:06	1:41	1:24

SE-4, 08 AUG 2024 to 05 SEP 2024

SE-4, 08 AUG 2024 to 05 SEP 2024