

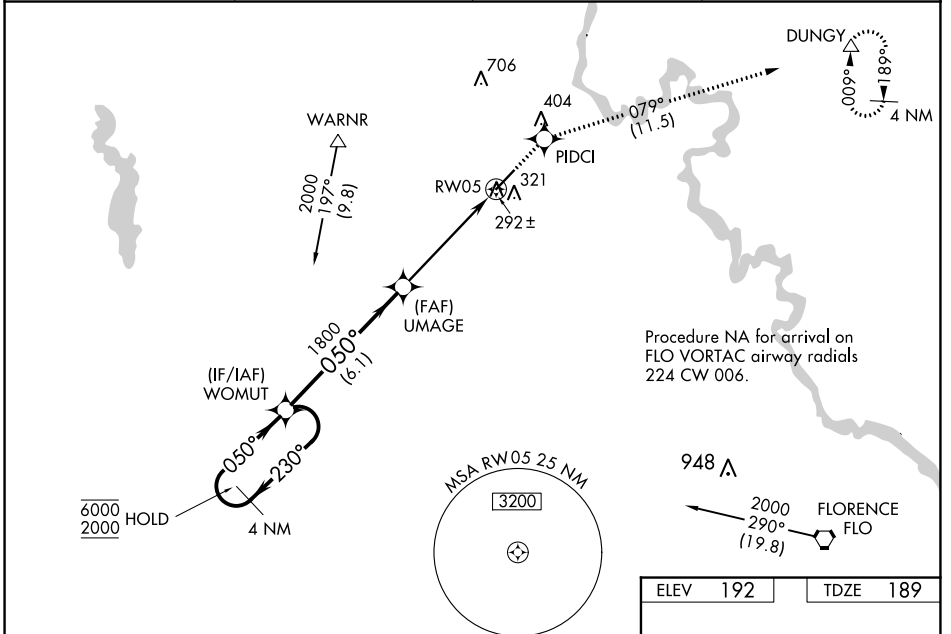
WAAS CH 42704 W05A	APP CRS 050°	Rwy Idg TDZE Apt Elev	5500 189 192
--	------------------------	-----------------------------	---

RNAV (GPS) RWY 5

DARLINGTON COUNTY (UDG)

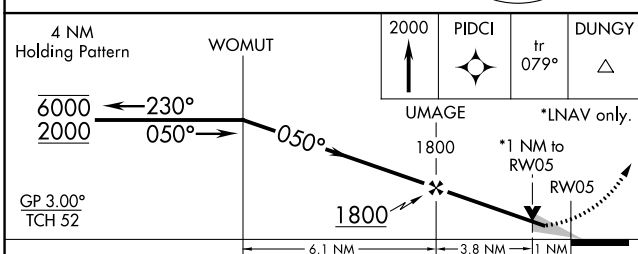
RNP APCH.		ODALS	MISSED APPROACH: Climb to 2000 direct PIDCI and on track 079° to DUNGY and hold.
<p>⚠ Inop table does not apply. For uncompensated Baro-VNAV systems, LNAV/VNAV NA below -15°C or above 54°C.</p>			

AWOS-3PT 119.925	FLORENCE APP CON * 118.6 341.7	CLNC DEL 118.55	UNICOM 123.0(CTAF) 0
----------------------------	--	---------------------------	--------------------------------



SE-2, 08 AUG 2024 to 05 SEP 2024

SE-2, 08 AUG 2024 to 05 SEP 2024



ELEV 192	TDZE 189
----------	----------

CATEGORY	A	B	C	D
LPV DA	493-1 304 (400-1)			
LNAV/VNAV DA	562-1¼ 373 (400-1¼)			
LNAV MDA	560-1 371 (400-1)			560-1¼ 371 (400-1¼)
CIRCLING	640-1 448 (500-1)	660-1 468 (500-1)	720-1½ 528 (600-1½)	1020-2¾ 828 (900-2¾)

