

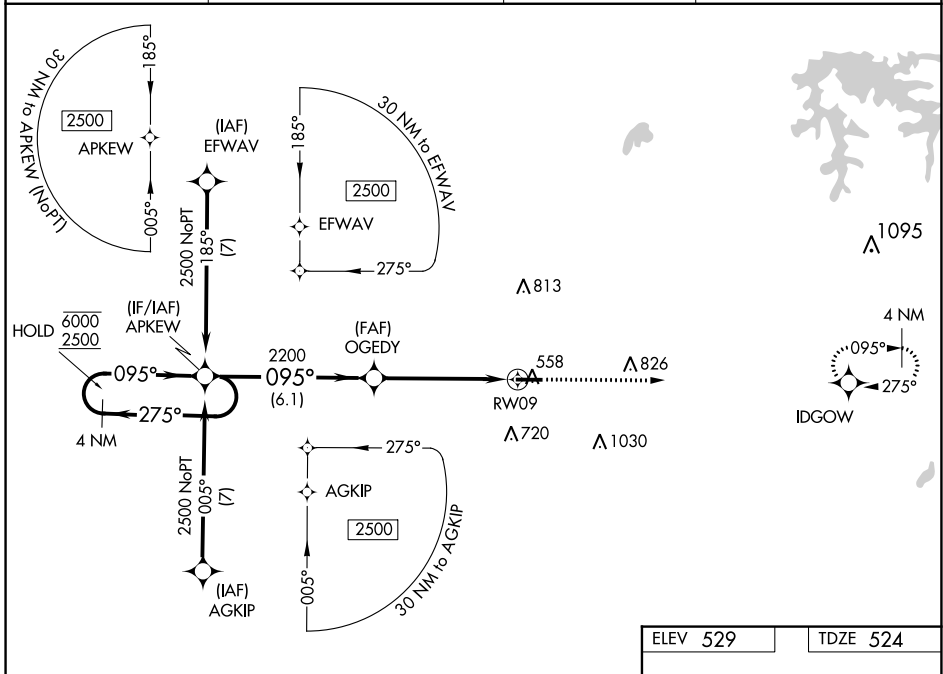
WAAS CH 49207 W09A	APP CRS 095°	Rwy Idg TDZE Apt Elev	5501 524 529
--	------------------------	-----------------------------	---

RNAV (GPS) RWY 9

HUNTINGBURG (HNB)

RNP APCH - GPS.		MISSED APPROACH: Climb to 2500 direct IDGOW and hold.	
<p>▼ Rwy 9 helicopter visibility reduction below 3/4 SM NA. For uncompensated Baro-VNAV systems, LNAV/VNAV NA below -16°C or above 54°C.</p>			

AWOS-3PT 118.250	EVANSVILLE APP CON ★ 124.025 290.9	CLNC DEL 118.8	UNICOM 122.8 (CTAF) 0
----------------------------	--	--------------------------	---------------------------------



EC-2, 08 AUG 2024 to 05 SEP 2024

EC-2, 08 AUG 2024 to 05 SEP 2024

4 NM Holding Pattern		VGSI and RNAV glidepath not coincident (VGSI Angle 3.00/TCH 40).		2500	IDGOW
<p>6000 ← 275°</p> <p>2500 → 095°</p> <p>GP 3.00° TCH 44</p>		<p>APKEW</p> <p>OGEDY 2200</p> <p>1.5 NM to RWY 9</p> <p>RWY 9</p>		↑	✦
<p>6.1 NM</p> <p>3.7 NM</p> <p>1.5 NM</p>		<p>095°</p> <p>5501 X 100</p> <p>0.3% UP</p> <p>27</p>			
CATEGORY	A	B	C	D	
LPV DA		774-3/4	250 (300-3/4)		
LNAV/VNAV DA		810-7/8	286 (300-7/8)		
LNAV MDA	1020-1	496 (500-1)	1020-1 3/8	496 (500-1 3/8)	
CIRCLING	1020-1 491 (500-1)	1040-1 511 (600-1)	1040-1 1/2 511 (600-1 1/2)	1380-2 3/4 851 (900-2 3/4)	MIRL Rwy 9-27 0 REIL Rws 9 and 27 0