

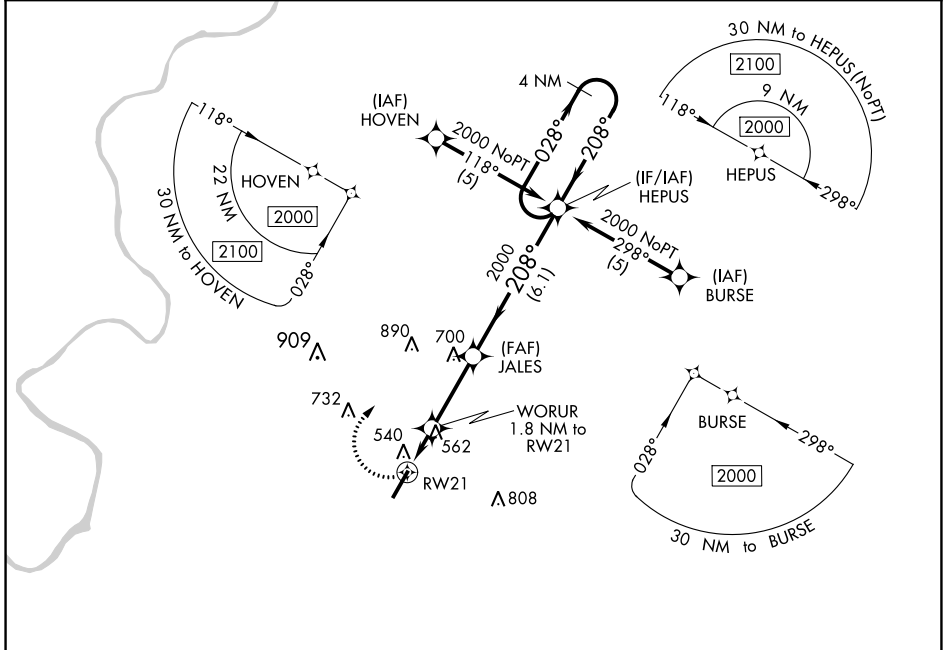
APP CRS	Rwy Idg	6028
208°	TDZE	419
	Apt Elev	419

RNAV (GPS) RWY 21
MONROE COUNTY AEROPLEX (MVC)

RNP APCH. MISSED APPROACH: Climbing right turn to 2000 direct HEPUS and hold.

▽ Obtain local altimeter setting on CTAF; when not received, use Evergreen Rgnl/Middleton Fld altimeter setting. Procedure NA at night. Rwy 21 helicopter visibility reduction below 1 SM NA.

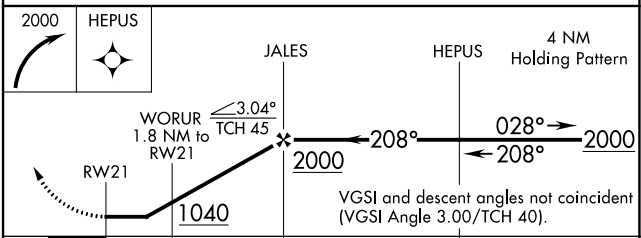
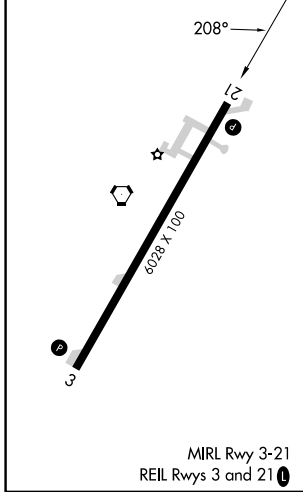
ATLANTA CENTER **118.55 267.9** UNICOM **123.0** (CTAF) **0**



SE-4, 08 AUG 2024 to 05 SEP 2024

SE-4, 08 AUG 2024 to 05 SEP 2024

ELEV 419	TDZE 419
----------	----------



CATEGORY	A	B	C	D
LNAV/MDA	880-1	461 (500-1)	880-1 ¹ / ₄ 461 (500-1 ¹ / ₄)	880-1 ¹ / ₂ 461 (500-1 ¹ / ₂)
CIRCLING	880-1 461 (500-1)	920-1 501 (600-1)	920-1 ¹ / ₂ 501 (600-1 ¹ / ₂)	1120-2 ¹ / ₄ 701 (800-2 ¹ / ₄)
EVERGREEN RGNL/MIDDLETON FLD ALTIMETER SETTING MINIMUMS				
LNAV/MDA	940-1	521 (600-1)	940-1 ¹ / ₂ 521 (600-1 ¹ / ₂)	940-1 ³ / ₄ 521 (600-1 ³ / ₄)
CIRCLING	940-1 521 (600-1)	980-1 561 (600-1)	980-1 ¹ / ₂ 561 (600-1 ¹ / ₂)	1180-2 ¹ / ₂ 761 (800-2 ¹ / ₂)