

WAAS CH 61126 W22A	APP CRS 224°	Rwy Idg TDZE Apt Elev	5000 1662 1664
--	------------------------	-----------------------------	---

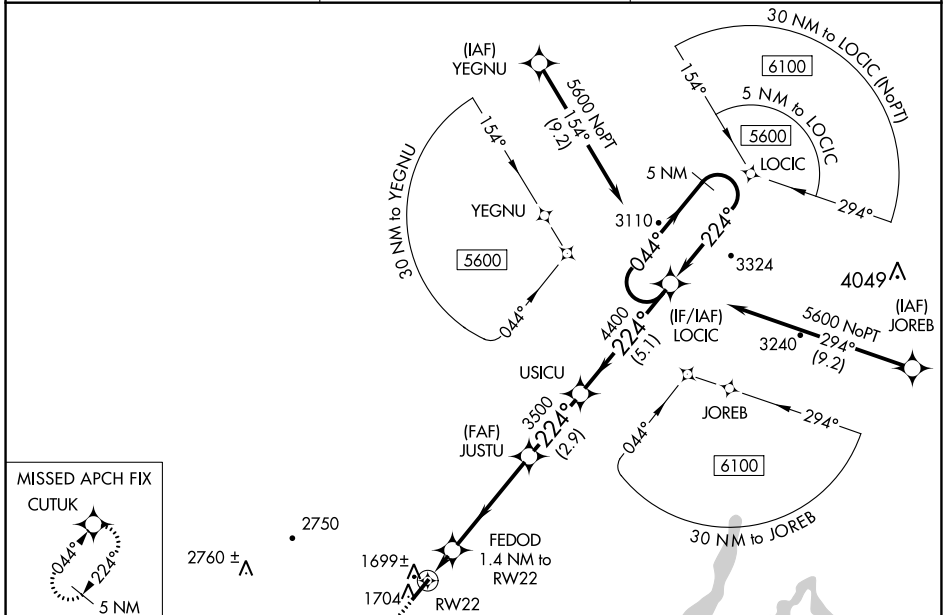
RNAV (GPS) RWY 22

ROCKWOOD MUNI (RKW)

NA For uncompensated Baro-VNAV systems, LNAV/VNAV NA below -18°C (0°F) or above 33°C (91°F). DME/DME RNP-0.3 NA. When local altimeter setting not received, use Crossville altimeter setting; increase LPV DA to 1987 feet and visibility all Cats ¼ SM; increase LNAV/VNAV DA to 2011 feet and visibility all Cats ¼ SM; increase all MDA 80 feet and increase LNAV Cat C and D visibility ¼ SM and Circling Cat C visibility ½ SM. Baro-VNAV NA when using Crossville altimeter setting.

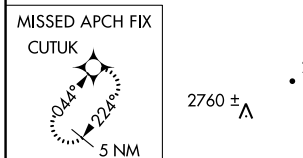
MISSED APPROACH: Climb to 5300 direct CUTUK and hold, continue climb-in-hold to 5300.

AWOS-3 118.775	ATLANTA CENTER 133.6 254.3	UNICOM 122.8 (CTAF)
--------------------------	--------------------------------------	-------------------------------

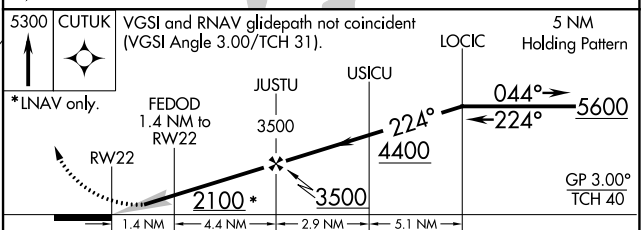
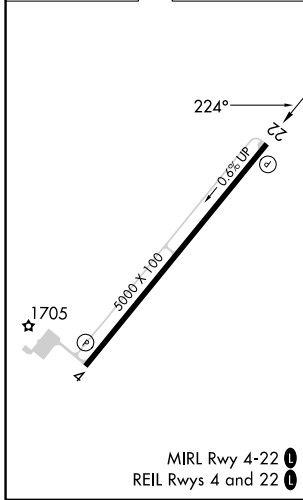


SE-1, 08 AUG 2024 to 05 SEP 2024

SE-1, 08 AUG 2024 to 05 SEP 2024



ELEV 1664	TDZE 1662
-----------	-----------



CATEGORY	A	B	C	D
LPV DA		1912-7/8	250 (300-7/8)	
LNAV/ VNAV DA		1936-7/8	274 (300-7/8)	
LNAV MDA		1980-1	318 (400-1)	
CIRCLING	2100-1 436 (500-1)	2200-1 536 (600-1)	2260-1½ 596 (600-1½)	2780-3 1116 (1200-3)