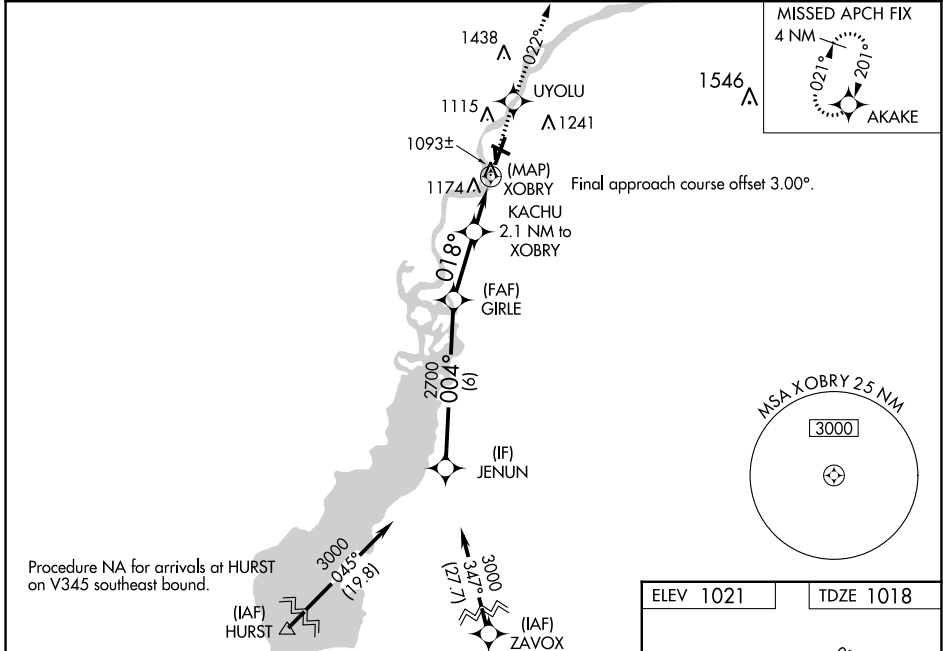


WAAS CH <b>77731</b> <b>W02A</b>	APP CRS <b>018°</b>	Rwy Idg TDZE Apt Elev	<b>5500</b> <b>1018</b> <b>1021</b>
--	------------------------	-----------------------------	---

# RNAV (GPS) RWY 2

ALEXANDER FLD SOUTH WOOD COUNTY (ISW)

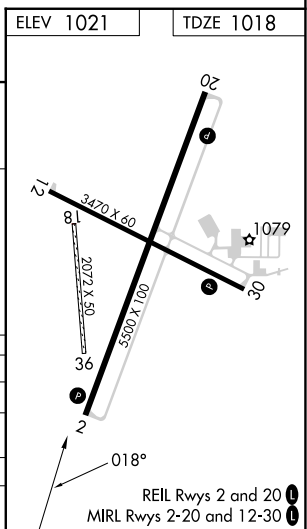
RNP APCH - GPS.		MISSED APPROACH: Climb to 3000 direct UYOLU and on track 022° to AKAKE and hold.
ASOS <b>126.575</b>	MINNEAPOLIS CENTER <b>124.4 317.7</b>	UNICOM <b>122.8 (CTAF) 0</b>



VGSI and RNAV glidepath not coincident (VGSI Angle 3.00/TCH 35).

JENUN	GIRLE	KACHU	UYOLU	AKAKE
3000	2700	1880	3000	tr 022°
GP 3.00° TCH 50	004°	018°		
6 NM	2.6 NM	1.4	0.7	0.5

CATEGORY	A	B	C	D
LPV DA	1298-1		280 (300-1)	
LNAV/VNAV DA	1493-1 <sup>3</sup> / <sub>8</sub>		475 (500-1 <sup>3</sup> / <sub>8</sub> )	
LNAV MDA	1440-1	422 (500-1)	1440-1 <sup>1</sup> / <sub>4</sub>	422 (500-1 <sup>1</sup> / <sub>4</sub> )
CIRCLING	1480-1 459 (500-1)	1560-1 539 (600-1)	1620-1 <sup>1</sup> / <sub>2</sub> 599 (600-1 <sup>1</sup> / <sub>2</sub> )	1800-2 <sup>1</sup> / <sub>2</sub> 779 (800-2 <sup>1</sup> / <sub>2</sub> )



EC-3, 08 AUG 2024 to 05 SEP 2024

EC-3, 08 AUG 2024 to 05 SEP 2024