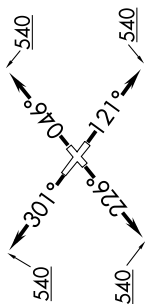


HOODO SEVEN DEPARTURE (RNAV)

SC-5, 08 AUG 2024 to 05 SEP 2024

CINC DEL  
125.6  
CTAF  
122.7  
HOUSTON DEP CON  
134.45 284.0



SCHOLES  
VUH

TAKEOFF MINIMUMS

Rwys 5, 12, 23, 30: Standard with  
minimum climb of 500' per NM to 540.

NOTE: RNAV 1.

NOTE: RADAR required.

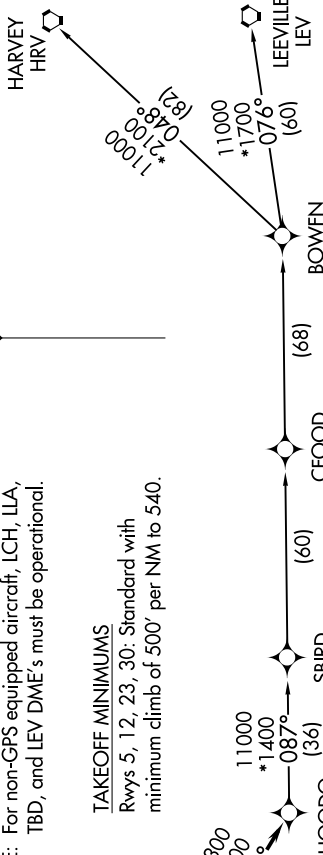
NOTE: ATC assigned only.

NOTE: DME/DME/IRU or GPS required.

NOTE: For non-GPS equipped aircraft, LCH, ILA,  
TBD, and LEV DME's must be operational.

TOP ALTITUDE:  
ASSIGNED BY ATC

N



NOTE: Chart not to scale.

DEPARTURE ROUTE DESCRIPTION

- TAKEOFF RUNWAY 5: Climb on heading 046° to 540, for RADAR vectors to VUH VOR/DME, thence . . . .
- TAKEOFF RUNWAY 12: Climb on heading 121° to 540, for RADAR vectors to VUH VOR/DME, thence . . . .
- TAKEOFF RUNWAY 23: Climb on heading 226° to 540, for RADAR vectors to VUH VOR/DME, thence . . . .
- TAKEOFF RUNWAY 30: Climb on heading 301° to 540, for RADAR vectors to VUH VOR/DME, thence . . . .

. . . . on track 118° to HOODO, then on (transition). Maintain ATC assigned altitude.  
Expect filed altitude 10 minutes after departure.

- BOWFN TRANSITION (HOODO7.BOWFN)
- CFOOD TRANSITION (HOODO7.CFOOD)
- HARVEY TRANSITION (HOODO7.HRV)
- LEEVILLE TRANSITION (HOODO7.LEV)
- SBIRD TRANSITION (HOODO7.SBIRD)

SC-5, 08 AUG 2024 to 05 SEP 2024