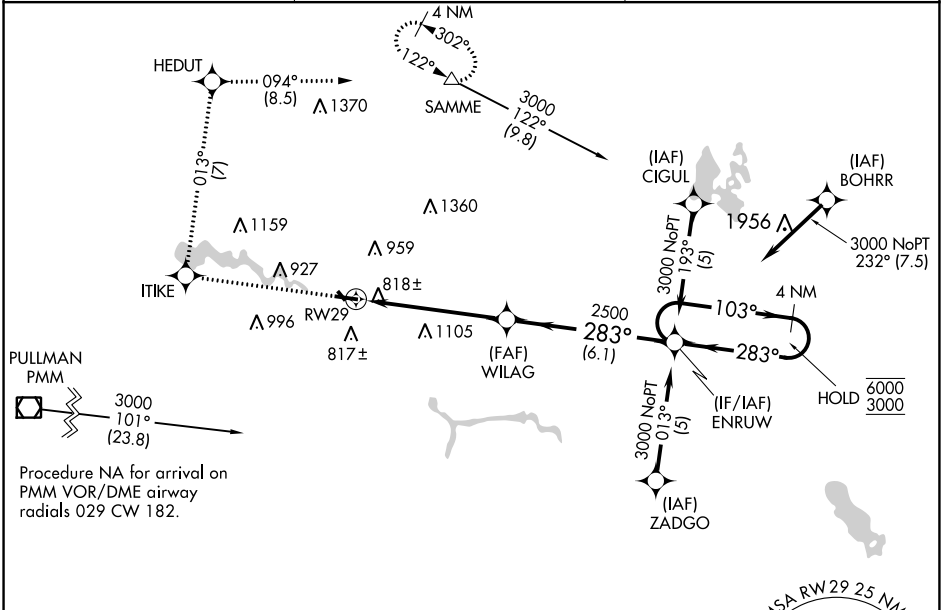


APP CRS <b>283°</b>	Rwy Idg TDZE Apt Elev	<b>4300</b> <b>705</b> <b>706</b>
------------------------	-----------------------------	---

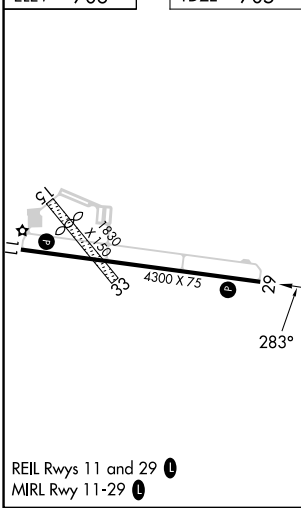
# RNAV (GPS) RWY 29

PADGHAM FLD (35D)

RNP APCH - GPS		MISSED APPROACH: Climb to 3000 direct ITIKE and on track 013° to HEDUT and track 094° to SAMME and hold.
<p><b>⚠</b> Circling NA to Rws 15 and 33. Rwy 29 helicopter visibility reduction below <math>\frac{3}{8}</math> SM NA. Use Holland altimeter setting; when not received, use Grand Rapids altimeter setting and increase all MDAs 40 feet and LNAV Cat C visibility <math>\frac{1}{8}</math> SM.</p>	GREAT LAKES APP CON ★ <b>128.4 257.6</b>	UNICOM <b>122.8 (CTAF) 0</b>



ELEV 706	TDZE 705
----------	----------



REIL Rws 11 and 29 **0**  
MIRL Rwy 11-29 **0**

3000	ITIKE	HEDUT	SAMME	ENRUW	4 NM Holding Pattern
↑	⊙	⊙	△		
	tr 013°	tr 094°			
RW29		WILAG	ENRUW	103°	6000
		3.04° TCH 40	283°	283°	3000
5.4 NM		6.1 NM			
CATEGORY	A	B	C	D	
LNAV MDA	1380-1	675 (700-1)	1380-1 $\frac{7}{8}$ 675 (700-1 $\frac{7}{8}$ )	NA	
<b>C</b> CIRCLING	1380-1	674 (700-1)	1460-2 $\frac{1}{4}$ 754 (800-2 $\frac{1}{4}$ )	NA	

EC-1, 08 AUG 2024 to 05 SEP 2024

EC-1, 08 AUG 2024 to 05 SEP 2024