

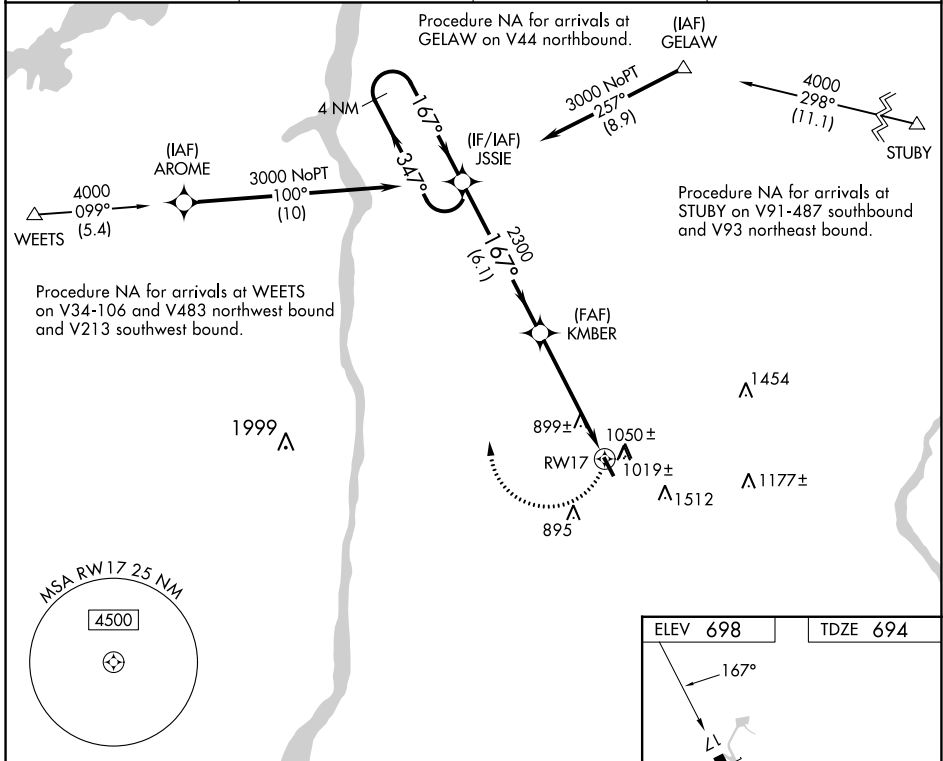
WAAS CH <b>78008</b> <b>W17A</b>	APP CRS <b>167°</b>	Rwy Idg TDZE <b>694</b> Apt Elev <b>698</b>	<b>3828</b> <b>694</b> <b>698</b>
--	------------------------	---	---

# RNAV (GPS) RWY 17

SKY ACRES (44N)

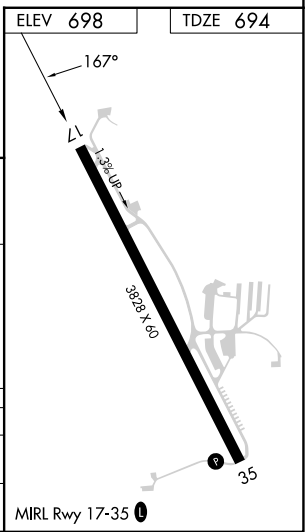
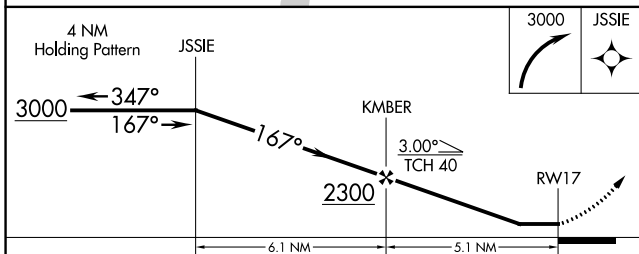
RNP APCH.	MISSED APPROACH: Climbing right turn to 3000 direct JSSIE and hold.
<p>▼</p> <p>▲ NA Use Newburgh altimeter setting; when not received, procedure NA. Rwy 17 helicopter visibility reduction below 3/4 SM NA.</p> <p>☒ -23°C</p>	

SWF ASOS <b>124,575</b>	POU ASOS <b>126.75</b>	NEW YORK APP CON <b>132.75 363.1</b>	UNICOM <b>122.8 (CTAF) 0</b>
----------------------------	---------------------------	---	---------------------------------



NE-2, 08 AUG 2024 to 05 SEP 2024

NE-2, 08 AUG 2024 to 05 SEP 2024



CATEGORY	A	B	C	D
LP MDA	1240-1	546 (600-1)		NA
LNAV MDA	1360-1	666 (700-1)		NA