

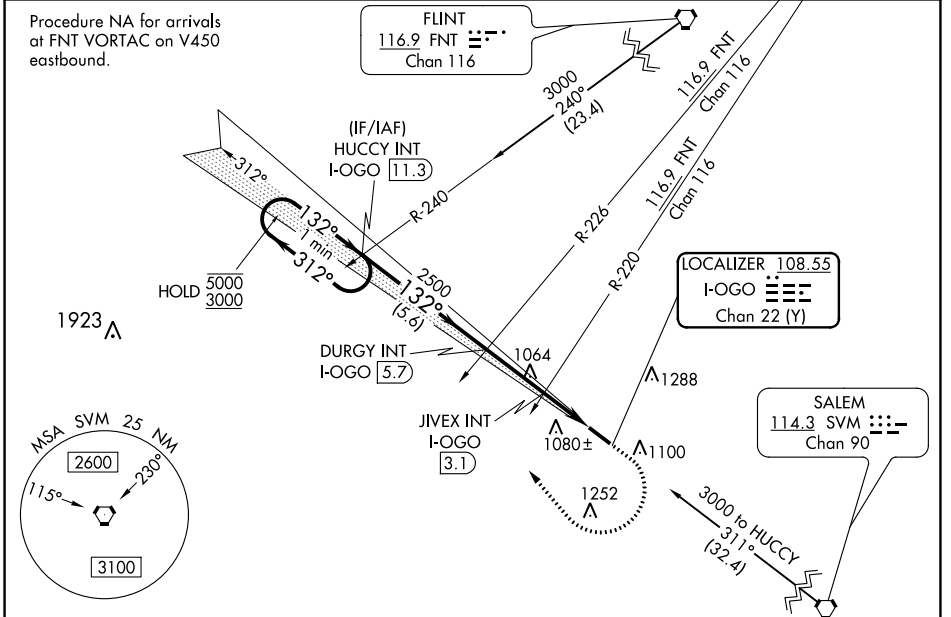
LOC/DME I-OGO 108.55 Chan 22 (Y)	APP CRS 132°	Rwy Idg 5002 TDZE 962 Apt Elev 962
--	------------------------	---

ILS or LOC RWY 13

LIVINGSTON COUNTY SPENCER J HARDY (OZW)

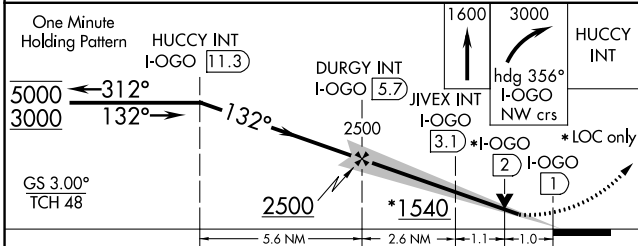
<p>▼ For inop ALS, increase LOC Cat C and D visibility to 1½ SM, and JIVEX fix minimums S-13 Cat C and D visibility to 1 SM.</p> <p>▲ NA</p>	<p>MALS R</p>	<p>MISSED APPROACH: Climb to 1600 then climbing right turn to 3000 heading 356° and I-OGO NW course to HUCCY INT/ I-OGO 11.3 DME and hold.</p>
--	---------------	--

AWOS-3 118.875	DETROIT APP CON 132.35 284.0	CLNC DEL 121.725 (GCO)	UNICOM 123.0 (CTAF) 0
--------------------------	--	----------------------------------	---------------------------------



EC-1, 08 AUG 2024 to 05 SEP 2024

EC-1, 08 AUG 2024 to 05 SEP 2024



ELEV 962	TDZE 962
----------	----------

CATEGORY	A	B	C	D
S-ILS 13	1162-½		200 (200-½)	
S-LOC 13	1540-½ 578 (600-½)		1540-1¼ 578 (600-1¼)	
CIRCLING	1540-1 578 (600-1)		1600-1¾ 638 (700-1¾) / 1600-2 638 (700-2)	
JIVEX FIX MINIMUMS (DUAL VOR RECEIVERS OR DME REQUIRED)				
S-LOC 13	1320-½ 358 (400-½)		1320-5/8 358 (400-5/8)	
CIRCLING	1400-1 438 (500-1) / 1420-1 458 (500-1)		1600-1¾ 638 (700-1¾) / 1600-2 638 (700-2)	

