

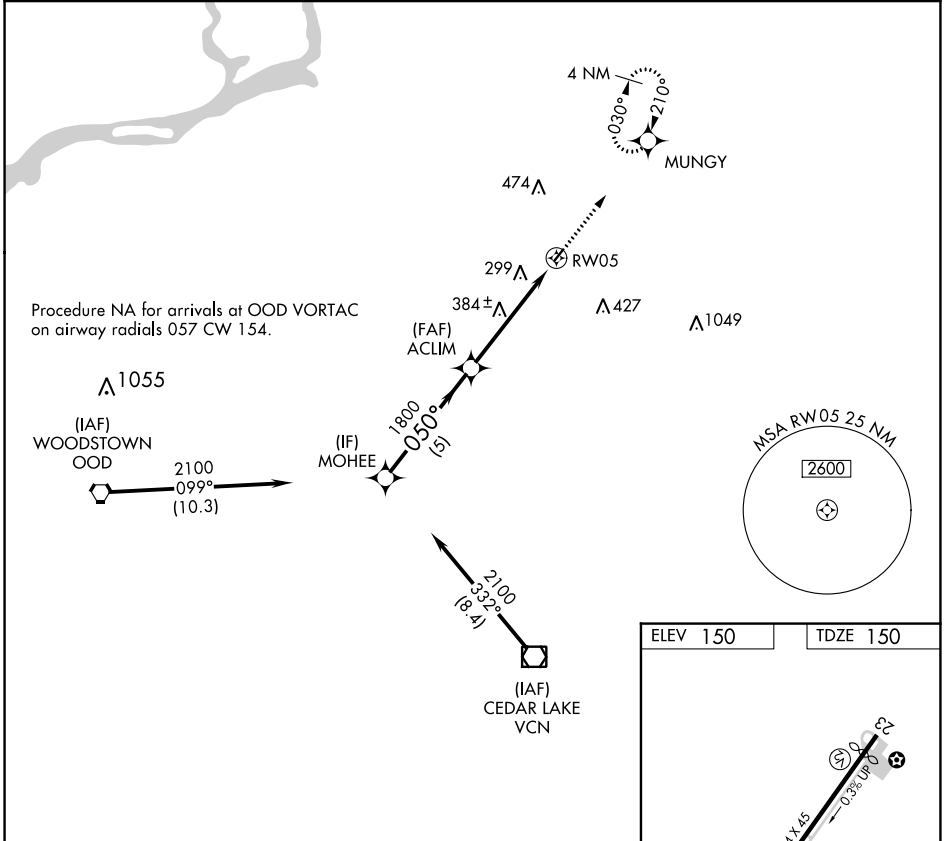
APP CRS	Rwy Idg	2354
050°	TDZE	150
	Apt Elev	150

RNAV (GPS) RWY 5

PINE VALLEY (19N)

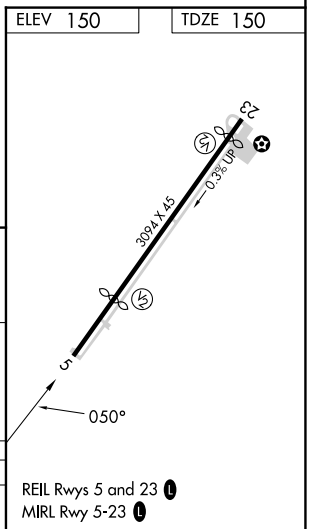
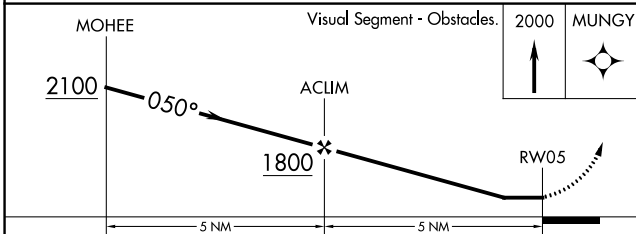
RNP APCH.	<p>Rwy 5 helicopter visibility reduction below 1 SM NA. Procedure NA at night. Use Mount Holly altimeter setting; when not received use Philadelphia Intl altimeter setting and increase all MDA 20 feet.</p>	<p>MISSED APPROACH: Climb to 2000 direct MUNGY and hold.</p>
<p>▼ ▲ NA</p>		

MC GUIRE APP CON 126.475 363.8	UNICOM 123.0 (CTAF)
--	-------------------------------



NE-2, 08 AUG 2024 to 05 SEP 2024

NE-2, 08 AUG 2024 to 05 SEP 2024



CATEGORY	A	B	C	D
LNAV MDA	740-1	590 (600-1)	NA	