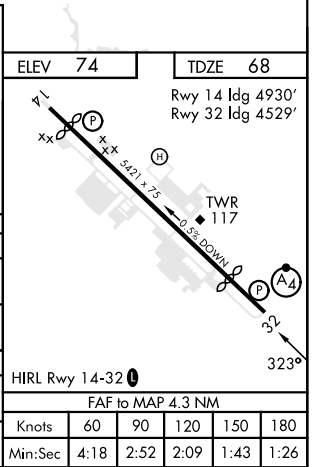
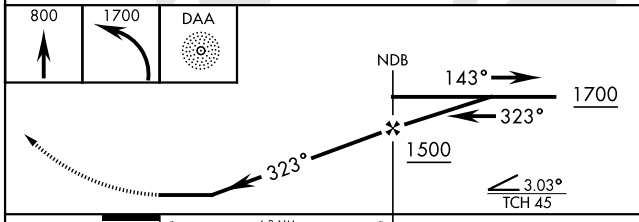
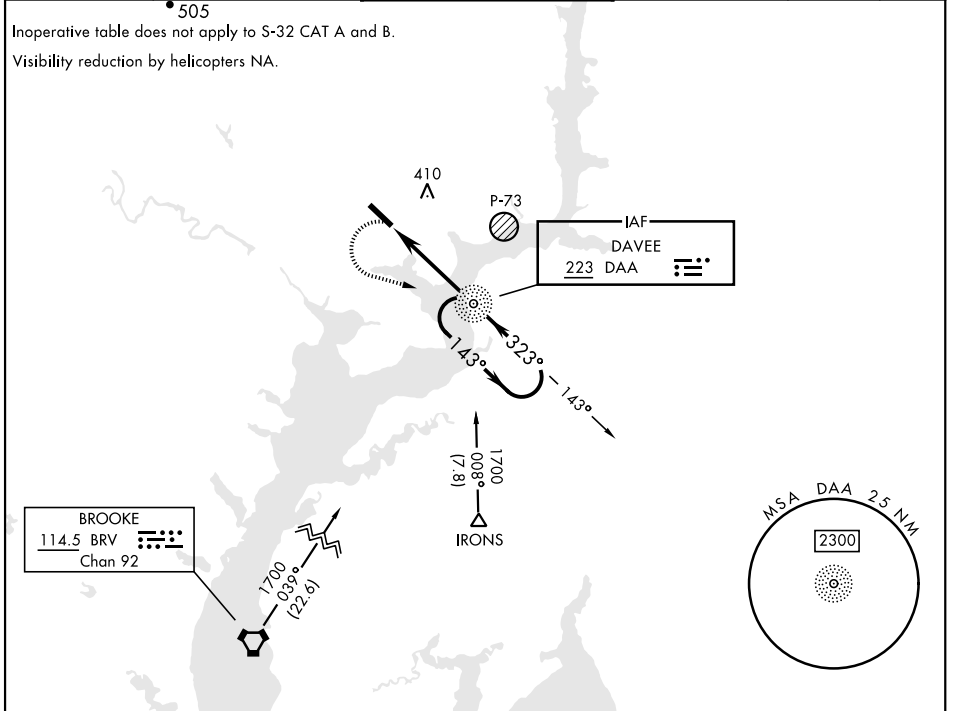


# NDB RWY 32

NDB DAA <b>223</b>	APCH CRS <b>323°</b>	Rwy ldg TDZE Arprt Elev <b>4529</b> <b>68</b> <b>74</b>	AL-5504 [USA]	DAVISON AAF (KDAV)
-----------------------	-------------------------	--	---------------	--------------------

<p>▼ * When ALS inop, increase CAT D vis to 2 ¼ miles. ** If local altimeter setting not received, use Ronald Reagan Washington National altimeter setting.</p>	<p>MALSF <b>(A4)</b></p>	<p>MISSED APPROACH: Climb to 800 then climbing left turn to 1700 direct DAA NDB and hold.</p>
---	------------------------------	---

ATIS <b>128.175</b>	POTOMAC APP CON <b>118.95 319.1</b>	TOWER* <b>124.275 (CTAF) 0 229.4</b>	GND CON <b>121.9 351.8</b>	CLNC DEL <b>351.8</b>	PAR
------------------------	--	---	-------------------------------	--------------------------	-----



CATEGORY	A	B	C	D
S-32 *	740/50	672 (700-1)	740-1 ¾ 672 (700-1 ¾)	740-2 672 (700-2)
CIRCLING	740-1	666 (700-1)	740-1 ¾ 666 (700-1 ¾)	760-2 ¼ 686 (700-2 ¼)
<b>** RONALD REAGAN WASHINGTON NATIONAL ALTIMETER SETTING MINIMUMS</b>				
S-32 *	780/50	712 (800-1)	780-1 ¾ 712 (800-1 ¾)	780-2 712 (800-2)
CIRCLING	780-1	706 (800-1)	780-1 ¾ 706 (800-1 ¾)	800-2 ¼ 726 (800-2 ¼)

# NDB RWY 32

NE-3, 08 AUG 2024 TO 05 SEP 2024

NE-3, 08 AUG 2024 TO 05 SEP 2024