

TOP ALTITUDE:  
3000

EC-1, 08 AUG 2024 to 05 SEP 2024

ATIS 134.55

CLNC DEL 121.6

GND CON 121.6

ANN ARBOR TOWER \*

120.3 (CTAF)

DETROIT DEP CON

118.95 284.0

TAKEOFF MINIMUMS

Rwys 12, 30: NA - Environmental.

Rwys 6, 24: Standard.

NOTE: RADAR required.

NOTE: DME required.

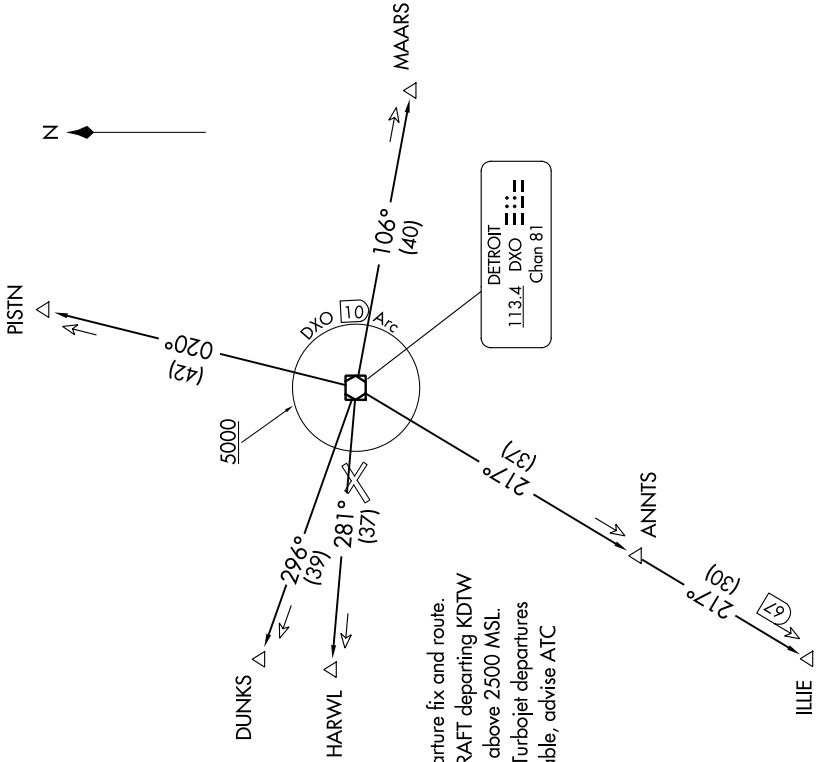
NOTE: For use by non-RNAV equipped aircraft only.

SPECIAL INSTRUCTIONS:

When using this departure, file the appropriate depicted departure fix and route. Aircraft over HARWL must file FL220 and below. PROP AIRCRAFT departing KDTW Rwy 21L/R and 22L/R westbound, cross DXO 3.5 DME at or above 2500 MSL. Aircraft landing Cleveland (CLE) must file MAARS transition. Turbojet departures at/above 10000, maintain 280K until advised by ATC. If unable, advise ATC prior to departure.

(NARRATIVE ON FOLLOWING PAGE)

NOTE: Chart not to scale.



EC-1, 08 AUG 2024 to 05 SEP 2024