

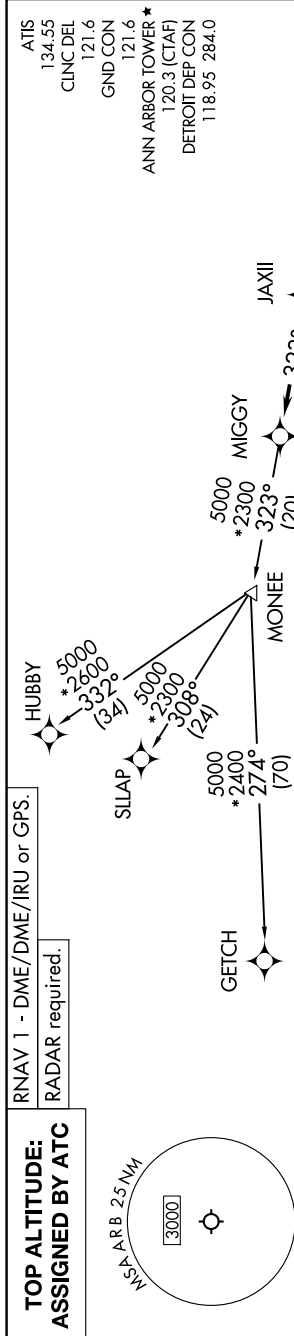
(MIGGY3.MIGGY) 24137

ANN ARBOR MUNI (ARB)

MIGGY THREE DEPARTURE (RNAV) AL-5506 (FAA)

ANN ARBOR, MICHIGAN

EC-1, 08 AUG 2024 to 05 SEP 2024



NOTE: Jet departures at/above 10000, maintain 280K until advised by ATC.  
NOTE: GETCH TRANSITION: For use by KMKE area arrivals only, or as assigned by ATC.

TAKEOFF MINIMUMS:  
Rwys 12, 30: NA - Environmental.  
Rwys 6, 24: Standard.

**DEPARTURE ROUTE DESCRIPTION**

TAKEOFF RUNWAY 6: Climb on heading 060° or as assigned by ATC, thence....  
TAKEOFF RUNWAY 24: Climb on heading 240° or as assigned by ATC, thence....  
...for RADAR vectors to JAXII, then on track 323° to MIGGY, then on (transition).  
Maintain 17000 or as assigned by ATC, expect filed altitude 10 minutes after departure.

GETCH TRANSITION (MIGGY3.GETCH):  
HUBBY TRANSITION (MIGGY3.HUBBY):  
SLLAP TRANSITION (MIGGY3.SLLAP):



NOTE: Chart not to scale.

MIGGY THREE DEPARTURE (RNAV) (MIGGY3.MIGGY) 16MAY24

ANN ARBOR, MICHIGAN  
ANN ARBOR MUNI (ARB)

EC-1, 08 AUG 2024 to 05 SEP 2024