

WAAS CH 90203 W13A	APP CRS 130°	Rwy Idg TDZE Apt Elev 4408 2032 2034
--	------------------------	--

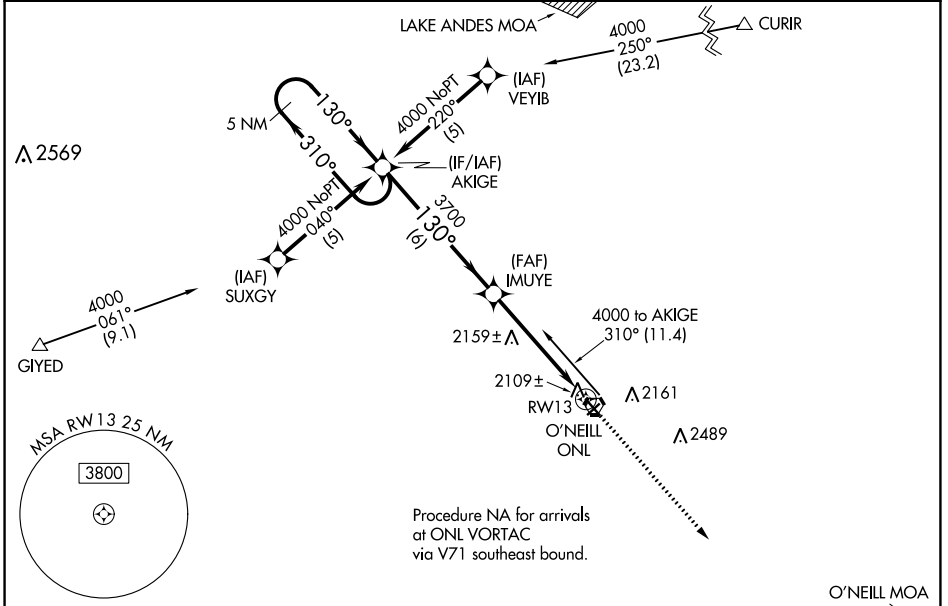
RNAV (GPS) RWY 13

THE O'NEILL MUNI-JOHN L BAKER FLD (ONL)

⚠ Baro-VNAV NA when using Evelyn Sharp Fld altimeter setting. For uncompensated Baro-VNAV systems, LNAV/VNAV NA below -19°C (-2°F) or above 54°C (130°F). DME/DME RNP-0.3 NA. Helicopter visibility reduction below ¾ SM NA. When local altimeter setting not received, use Evelyn Sharp Fld altimeter setting and increase LPV DA to 2433 feet, LNAV/VNAV DA to 2505 feet; increase all MDAs 140 feet and visibility Cat C ½ SM. VDP NA when using Evelyn Sharp Fld altimeter setting. Night landing: Rwy 4, 22 NA.

⚠ MISSED APPROACH: Climb to 4000 direct AFSIC and hold.

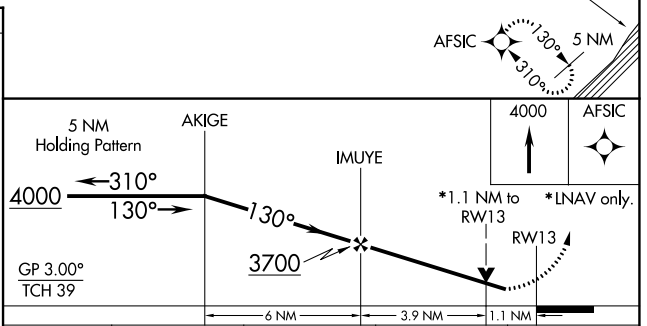
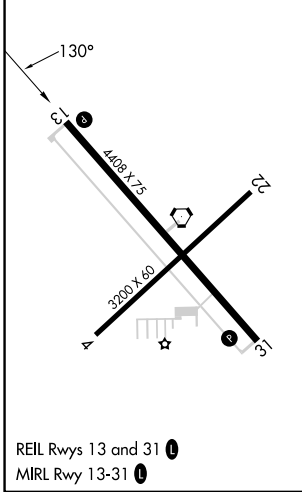
AWOS-3 121.125	MINNEAPOLIS CENTER 128.0 257.95	UNICOM 122.8 (CTAF) 0
--------------------------	---	---------------------------------



NC-2, 08 AUG 2024 to 05 SEP 2024

NC-2, 08 AUG 2024 to 05 SEP 2024

ELEV 2034	TDZE 2032
-----------	-----------



CATEGORY	A	B	C	D
LPV DA	2308-1 276 (300-1)			NA
LNAV/VNAV DA	2380-1¼ 348 (400-1¼)			NA
LNAV MDA	2420-1 388 (400-1)			NA
CIRCLING	2600-1 566 (600-1)		2680-1¾ 646 (700-1¾)	NA