

WAAS CH 99313 W19A	APP CRS 190°	Rwy ldg TDZE Apt Elev	6604 91 91
--	------------------------	-----------------------------	---------------------------------------

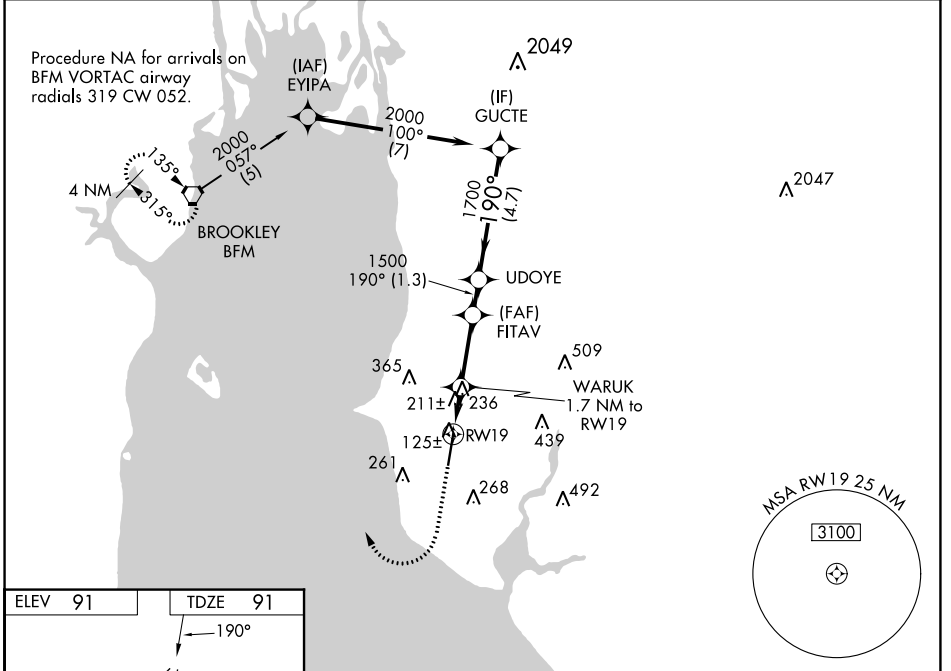
RNAV (GPS) RWY 19

H L SONNY CALLAHAN (CQF)

⚠ Baro-VNAV NA when using Mobile Intl altimeter setting. For uncompensated Baro-VNAV systems, LNAV/VNAV NA below -15°C (5°F) or above 43°C (109°F).
⚠ DME/DME RNP-0.3 NA. VDP NA with Mobile Intl altimeter setting. When local altimeter setting not received, use Mobile Intl altimeter setting and increase LPV DA to 383 feet, LNAV/VNAV DA to 555 feet and all MDA 60 feet; increase LNAV and Circling Cats C/D visibility ¼ SM.

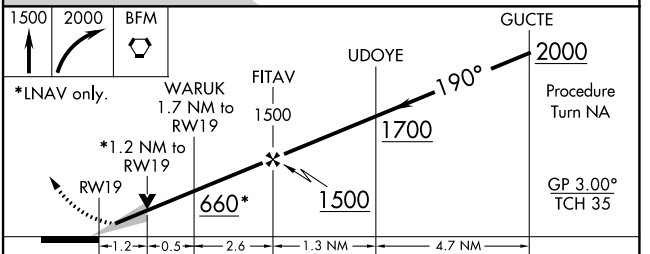
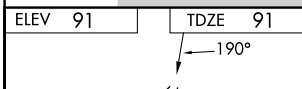
MISSED APPROACH: Climb to 1500 then climbing right turn to 2000 direct BFM Vortac and hold.

AWOS-3PT 118.425	MOBILE APP CON ★ 118.5 269.3	UNICOM 123.0 (CTAF) 0
----------------------------	--	---------------------------------



SE-4, 08 AUG 2024 to 05 SEP 2024

SE-4, 08 AUG 2024 to 05 SEP 2024



1500	2000	BFM	GUCTE
*LNAV only.		WARUK 1.7 NM to RWY19	Procedure Turn NA
*1.2 NM to RWY19		FITAV 1500	GP 3.00° TCH 35
660*		1500	
1.2		0.5	2.6
1.3		4.7	
CATEGORY	A	B	C
LPV DA	341-7/8		250 (300-7/8)
LNAV/VNAV DA	513-1 1/2		422 (500-1 1/2)
LNAV MDA	500-1	409 (500-1)	500-1 1/8 409 (500-1 1/8)
CIRCLING	560-1 469 (500-1)	580-1 489 (500-1)	720-1 3/4 629 (700-1 3/4) 740-2 649 (700-2)