

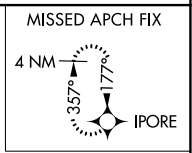
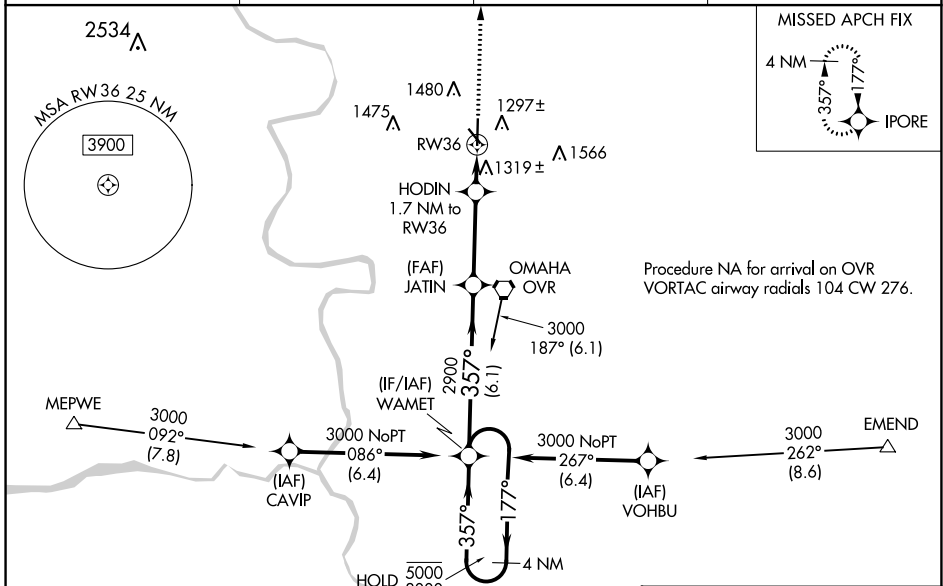
WAAS CH <b>53606</b> W36A	APP CRS <b>357°</b>	Rwy Idg TDZE <b>1245</b> Apt Elev <b>1245</b>
---------------------------------	------------------------	---

# RNAV (GPS) RWY 36

COUNCIL BLUFFS MUNI (CBF)

RNP APCH.	<p>MISSED APPROACH: Climb to 3000 direct IPORE and hold.</p>
<p>Baro-VNAV and VDP NA when using Eppley Airfield altimeter setting. For uncompensated Baro-VNAV systems, LNAV/VNAV NA below -17°C or above 54°C. When local altimeter setting not received, use Eppley Airfield altimeter setting and increase LPV DA to 1498 feet, LNAV/VNAV DA to 1548 feet, and all MDA 60 feet and increase LNAV/VNAV all Cats visibility 1/2 SM, LNAV Cat C and D visibility 1/4 SM, and Circling Cat C and D visibility 1/4 SM.</p>	

AWOS-3 <b>126.575</b>	OMAHA APP CON <b>124.5 263.0</b>	CLNC DEL <b>127.675</b>	UNICOM <b>122.725 (CTAF)</b>
--------------------------	-------------------------------------	----------------------------	---------------------------------



Procedure NA for arrival on OVR  
VORTAC airway radials 104 CW 276.

NC-3, 08 AUG 2024 to 05 SEP 2024

NC-3, 08 AUG 2024 to 05 SEP 2024

<p>4 NM Holding Pattern</p> <p>5000 ← 177°</p> <p>3000 → 357°</p> <p>GP 3.00°</p> <p>TCH 50</p>	WAMET	JATIN	HODIN	IPORE
<p>6.1 NM</p> <p>3.4 NM</p> <p>0.8 NM</p> <p>0.9 NM</p>	2900	2900	1.7 NM to RW36	3000
<p>*1820</p> <p>*0.9 NM to RW36</p>				*INAV only
CATEGORY	A	B	C	D
LPV DA		1445-3/4	200 (200-3/4)	
LNAV/VNAV DA		1495-3/4	250 (300-3/4)	
LNAV MDA		1580-1	335 (400-1)	
CIRCLING	1780-1 535 (600-1)	1840-1 595 (600-1)	1840-1 1/2 595 (600-1 1/2)	1880-2 635 (700-2)

