

WAAS CH 56336 W12A	APP CRS 126°	Rwy Ldg TDZE 541 Apt Elev 547
--	------------------------	---

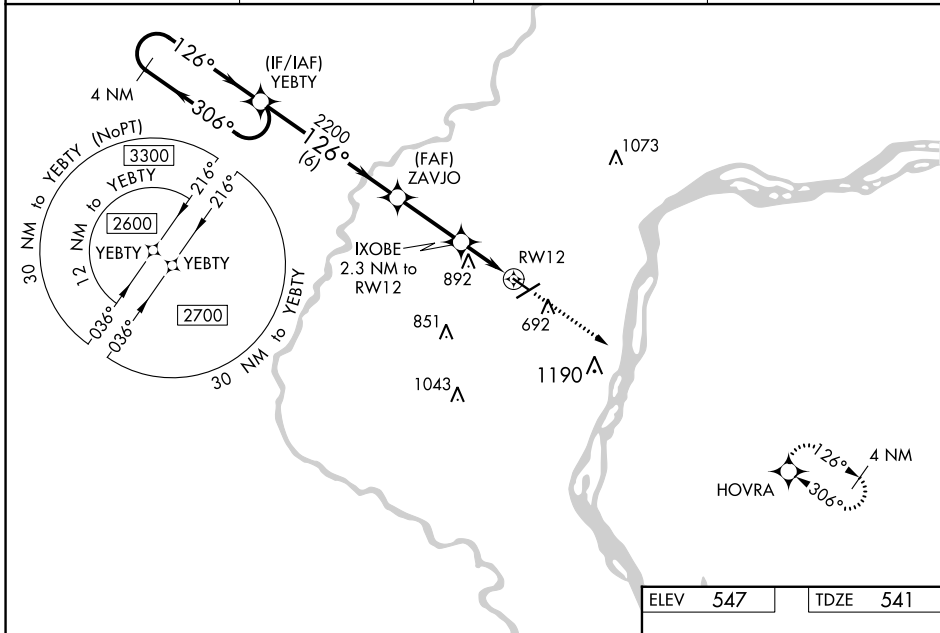
RNAV (GPS) RWY 12

MUSCATINE MUNI (MUT)

⚠ DME/DME RNP-0.3 NA. Helicopter visibility reduction below 1 SM NA. VDP and Baro-VNAV NA with Iowa City altimeter setting. When local altimeter setting not received, use Iowa City altimeter setting and increase all DA 76 feet and all MDA 80 feet, increase LPV, LNAV/VNAV all Cats visibility ½ mile. For uncompensated Baro-VNAV systems, LNAV/VNAV NA below -16°C (4°F) or above 54°C (130°F).

MISSED APPROACH: Climb to 2700 direct HOVRA and hold.

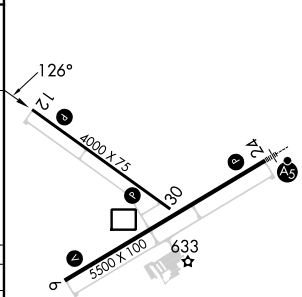
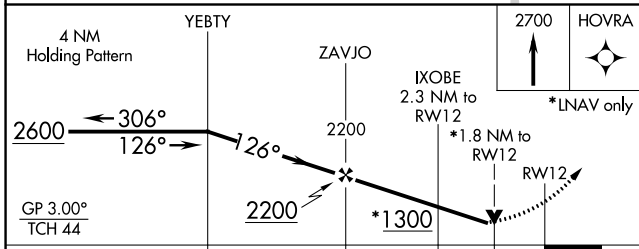
AWOS-3P 120.625	QUAD CITY APP CON * 133.275 257.8	CINC DEL 119.125	UNICOM 122.7 (CTAF)
---------------------------	---	----------------------------	-------------------------------



NC-3, 08 AUG 2024 to 05 SEP 2024

NC-3, 08 AUG 2024 to 05 SEP 2024

ELEV 547	TDZE 541
----------	----------



CATEGORY	A	B	C	D
LPV DA	1207-2½	666 (700-2½)		NA
LNAV/VNAV DA	1223-2½	682 (700-2½)		NA
LNAV MDA	1140-1	599 (600-1)		NA
CIRCLING	1140-1 593 (600-1)	1200-1 653 (700-1)		NA

REIL Rwy 6, 12, and 30
MIRL Rwy 6-24 and 12-30