

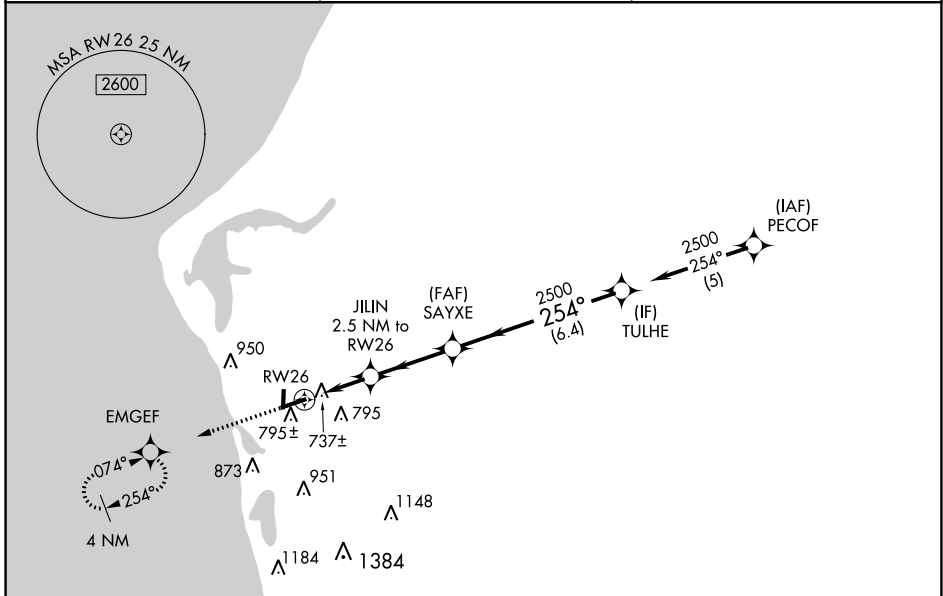
WAAS CH <b>49206</b> <b>W26A</b>	APP CRS <b>254°</b>	Rwy Idg TDZE <b>647</b> Apt Elev <b>647</b>	<b>5003</b>
--	------------------------	---	-------------

# RNAV (GPS) RWY 26

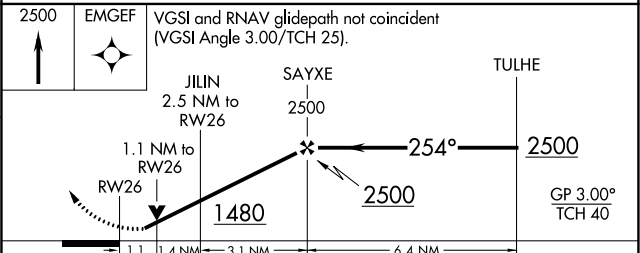
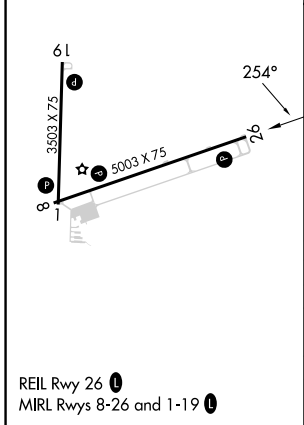
MASON COUNTY (LDM)

RNP APCH-GPS.		MISSED APPROACH: Climb to 2500 direct EMGEF and hold.
<p><b>⚠</b> Circling Rwy 1, 19 NA at night. Rwy 26 helicopter visibility reduction below ¾ SM NA. For uncompensated Baro-VNAV systems, LNAV/VNAV NA below -16°C or above 54°C.</p>		

AWOS-3 <b>119,925</b>	MINNEAPOLIS CENTER <b>120.85 322.35</b>	UNICOM <b>123.0 (CTAF) 0</b>
--------------------------	--	---------------------------------



ELEV <b>647</b>	TDZE <b>647</b>
-----------------	-----------------



CATEGORY	A	B	C	D
LPV DA	975-1	328 (400-1)		
LNAV/VNAV DA	1020-1	373 (400-1)		
LNAV MDA	1020-1	373 (400-1)		
CIRCLING	1160-1 513 (600-1)	1200-1 553 (600-1)	1260-1¾ 613 (700-1¾)	1460-2¾ 813 (900-2¾)

EC-1, 08 AUG 2024 to 05 SEP 2024

EC-1, 08 AUG 2024 to 05 SEP 2024