

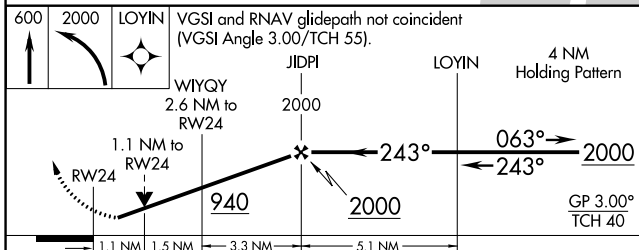
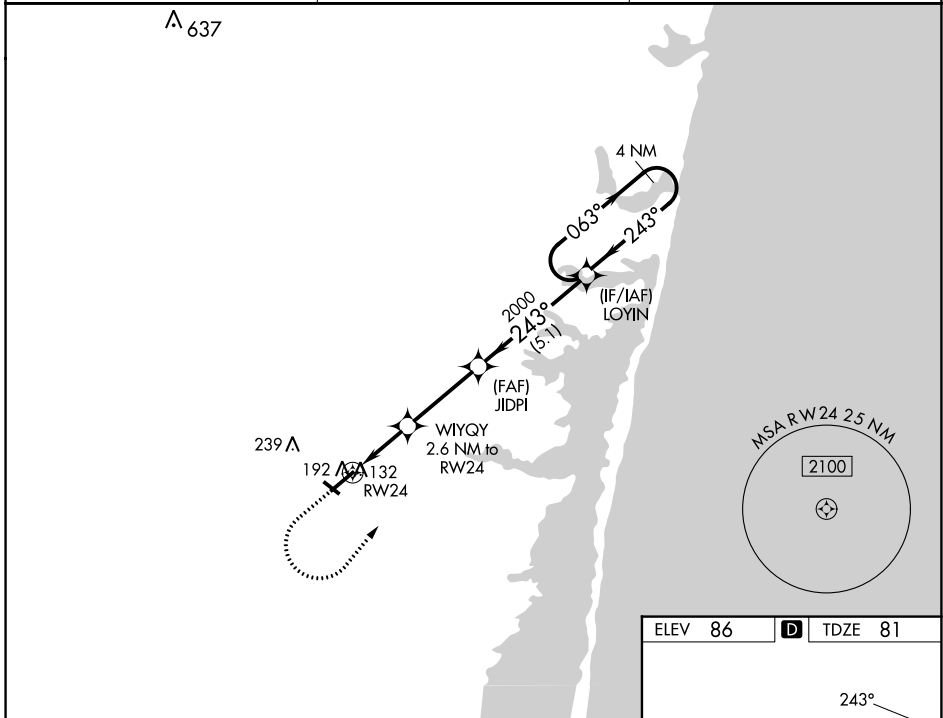
WAAS CH 86433 W24A	APP CRS 243°	Rwy Idg TDZE Apt Elev	5835 81 86
--	------------------------	-----------------------------	---------------------------------------

RNAV (GPS) RWY 24

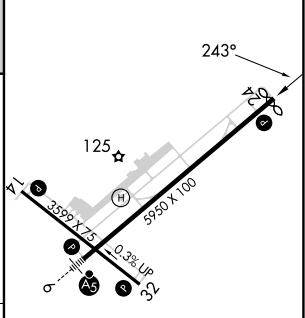
OCEAN COUNTY (MJX)

RNP APCH - GPS.	MISSED APPROACH: Climb to 600 then climbing left turn to 2000 direct to LOYIN and hold.
-----------------	---

AWOS-3PT 119.875	MC GUIRE APP CON 126.475 363.8	UNICOM 122.7 (CTAF) 📞
----------------------------	--	--



ELEV 86	D	TDZE 81
---------	----------	---------



CATEGORY	DA	A	B	C	D
LPV	DA		331- $\frac{3}{4}$	250 (300- $\frac{3}{4}$)	
LNAV/VNAV	DA		358- $\frac{7}{8}$	277 (300- $\frac{7}{8}$)	
LNAV	MDA		460-1	379 (400-1)	
C CIRCLING		540-1 454 (500-1)	560-1 474 (500-1)	580-1 $\frac{1}{2}$ 494 (500-1 $\frac{1}{2}$)	700-2 614 (700-2)

MIRL Rwy 14-32 **📞**
 HIRL Rwy 6-24 **📞**
 REIL Rwy 14, 24 and 32 **📞**

NE-2, 08 AUG 2024 to 05 SEP 2024

NE-2, 08 AUG 2024 to 05 SEP 2024