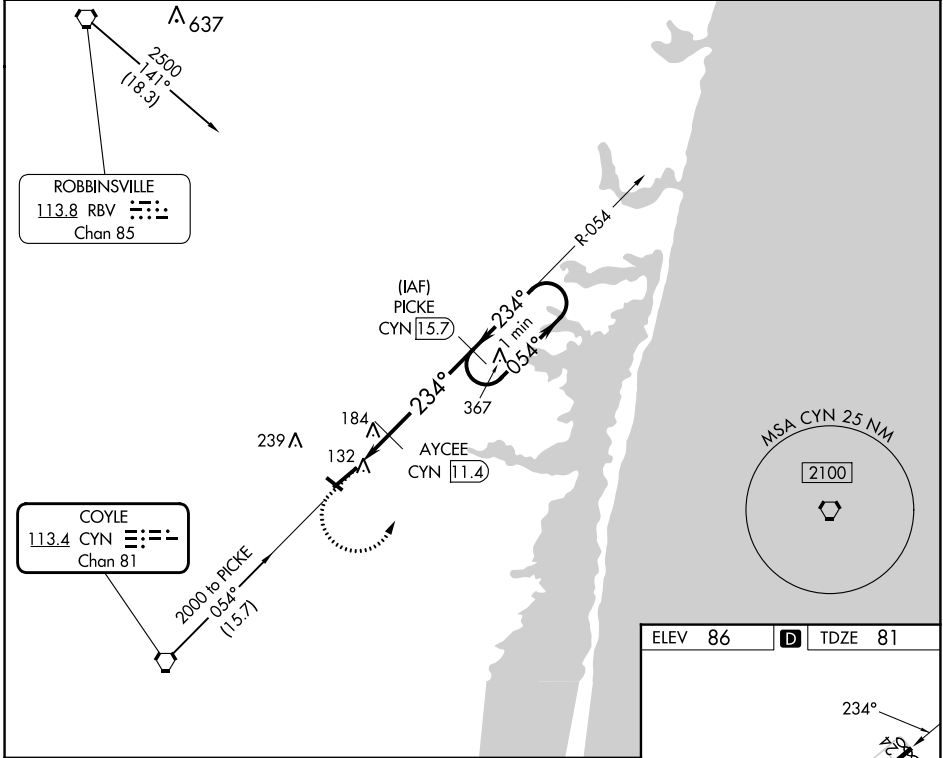


VORTAC CYN 113.4 Chan 81	APP CRS 234°	Rwy Idg TDZE 81 Apt Elev 86	5835
--	------------------------	--	-------------

VOR RWY 24

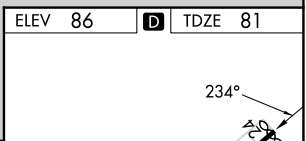
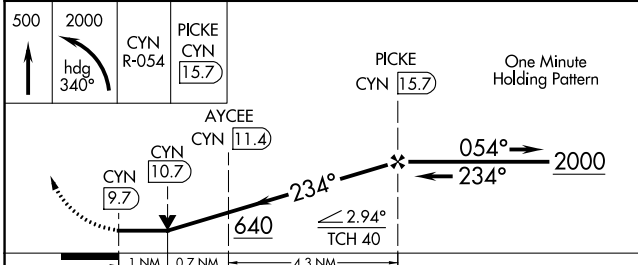
OCEAN COUNTY (MJX)

DME required for procedure entry. DME required.		MISSED APPROACH: Climb to 500 then climbing left turn to 2000 on heading 340° and on CYN VORTAC R-054 to PICKE/CYN 15.7 DME and hold.
Rwy 24 helicopter visibility reduction below 3/4 SM NA. Circling Rwy 14, 32 NA at night.		
AWOS-3PT 119.875	MC GUIRE APP CON 126.475 363.8	UNICOM 122.7 (CTAF) 0



NE-2, 08 AUG 2024 to 05 SEP 2024

NE-2, 08 AUG 2024 to 05 SEP 2024



ELEV 86	D TDZE 81
500	2000
↑	hdg 340°
CYN R-054	PICKE CYN 15.7
One Minute Holding Pattern	
AYCEE CYN 11.4	
CYN 9.7	CYN 10.7
640	2000
234°	054°
234°	234°
≤ 2.94°	TCH 40
1 NM	0.7 NM
4.3 NM	
CATEGORY	A B C D
S-24	440-1 359 (400-1)
C CIRCLING	540-1 560-1 580-1½ 700-2
	454 (500-1) 474 (500-1) 494 (500-1½) 614 (700-2)

MIRL Rwy 14-32
HIRL Rwy 6-24
REIL Rws 14, 24 and 32