

| | | |
|--|------------------------|---|
| WAAS CH 50309 W22A | APP CRS 218° | Rwy Idg TDZE 161 Apt Elev 163 |
|--|------------------------|---|

RNAV (GPS) RWY 22

MC MINNVILLE MUNI (MMV)

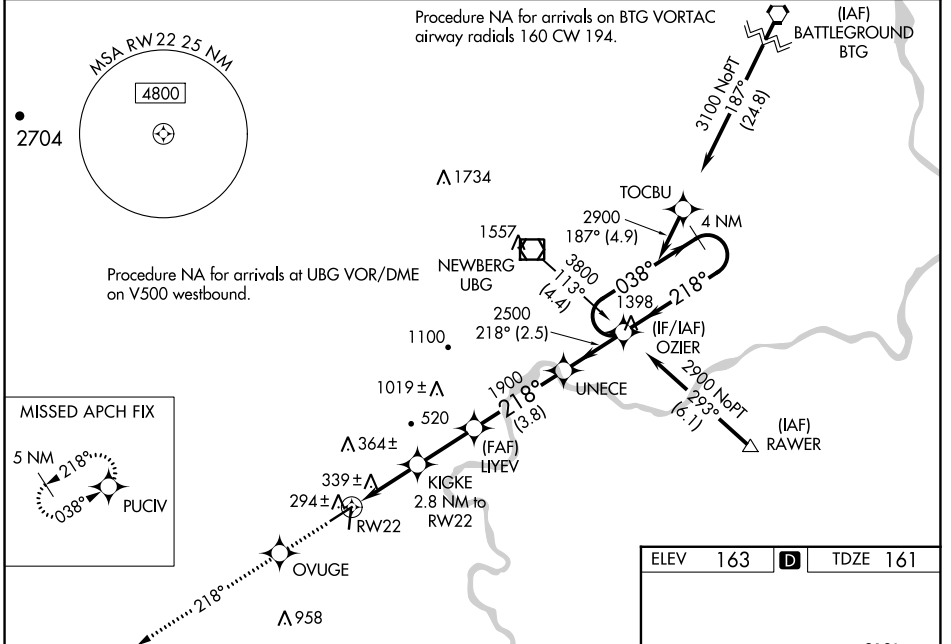
RNP APCH.

▼ Baro-VNAV NA when using Aurora State altimeter setting. For uncompensated Baro-VNAV systems, LNAV/VNAV NA below -15°C or above 48°C. When local altimeter setting not received, use Aurora State altimeter setting; increase LPV DA to 534 feet, LNAV/VNAV DA to 703 feet; increase all MDAs 60 feet and visibility LNAV Cats C and D ½ SM. For inop ALS, increase LPV all Cats visibility to ¾ SM, LNAV/VNAV all Cats to 1 ½ SM, LNAV Cat A/B to 1 SM and Cat C/D to 1 ½ SM. For inop ALS when using Aurora State altimeter setting, increase LNAV/VNAV all Cats visibility to 1 ½ SM, LNAV Cat A/B to 1 SM and Cat C/D to 1 ½ SM. VDP NA when using Aurora State altimeter setting.

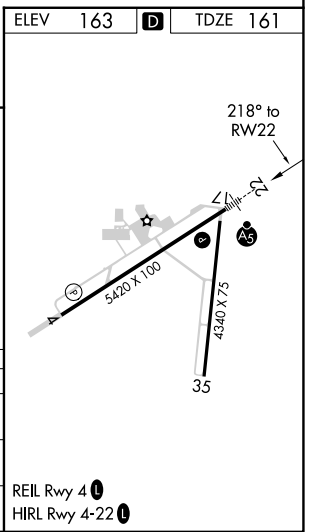
MALSR
AS

MISSED APPROACH:
Climb to 4900 direct OVUGE then on 218° track to PUCIV and hold, continue climb-in-hold to 4900.

| | | | | |
|------------------------|--|--|---------------------------|--|
| ASOS 135.675 | PORTLAND APP CON 126.0 284.6 (NORTH) | SEATTLE CENTER 125.8 291.7 (SOUTH) | CLNC DEL 118.35 | UNICOM 123.0 (CTAF) 1 |
|------------------------|--|--|---------------------------|--|



| | | |
|----------------------|-------------------|---------------------|
| ELEV 163 | D | TDZE 161 |
| 4900 | OVUGE | PUCIV |
| * LNAV only | | |
| KIGKE 2.8 NM to RW22 | LIYEV 1900 | UNECE |
| * 1.7 NM to RW22 | 1100* | 1900 |
| RW22 | 218° | 2500 |
| 1.7 | 1.1 | 2.4 NM |
| 3.8 NM | 2.5 NM | |
| CATEGORY | A | B |
| LPV DA | 474-¾ | 313 (400-¾) |
| LNAV/VNAV DA | 643-1¼ | 482 (500-1¼) |
| LNAV MDA | 740-¾ 579 (600-¾) | 740-1¼ 579 (600-1¼) |



NW-1, 08 AUG 2024 to 05 SEP 2024

NW-1, 08 AUG 2024 to 05 SEP 2024