

WAAS CH 58027 W19A	APP CRS 187°	Rwy Idg TDZE Apt Elev	4154 2687 2694
--	------------------------	-----------------------------	---

RNAV (GPS) RWY 19

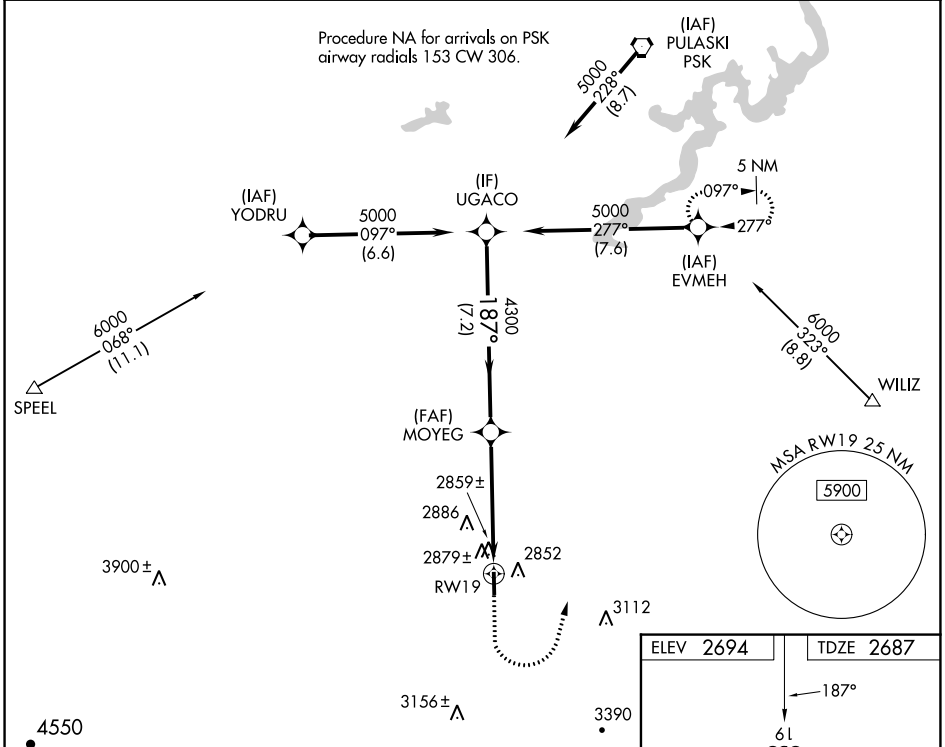
TWIN COUNTY (HLX)

RNP APCH - GPS.

▼ Rwy 19 helicopter visibility reduction below 3/4 SM NA. VDP NA with Dublin altimeter setting.
 ▲ When local altimeter setting not received, use Dublin altimeter setting: increase all MDAs 140 feet and visibility LP Cats C and D 3/8 SM and Circling Cat C 1/4 SM and Cat D 1/2 SM.

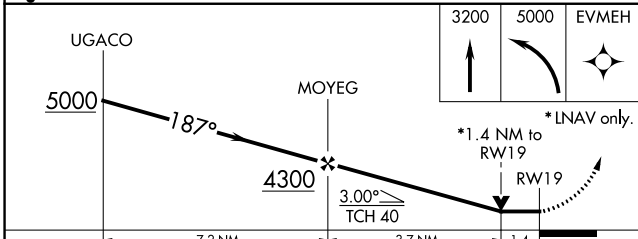
MISSED APPROACH: Climb to 3200 then climbing left turn to 5000 direct EVMEH and hold.

AWOS-3 118.375	ROANOKE APP CON 126.0 339.8	UNICOM 122.8 (CTAF) 0
--------------------------	---------------------------------------	---------------------------------



NE-3, 08 AUG 2024 to 05 SEP 2024

NE-3, 08 AUG 2024 to 05 SEP 2024



ELEV 2694	TDZE 2687
MRL Rwy 01-19 0 REIL Rwy 01 and 19 0	