

WAAS CH 49219 W16A	APP CRS 160°	Rwy ldg 5000 TDZE 573 Apt Elev 586
--	------------------------	---

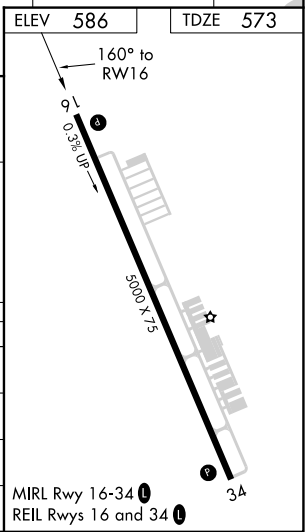
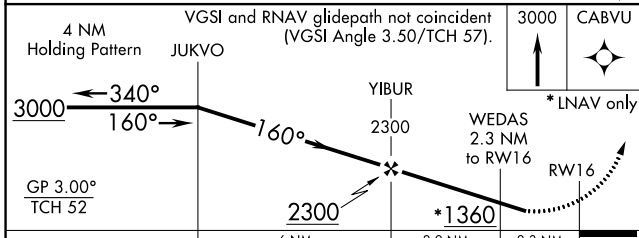
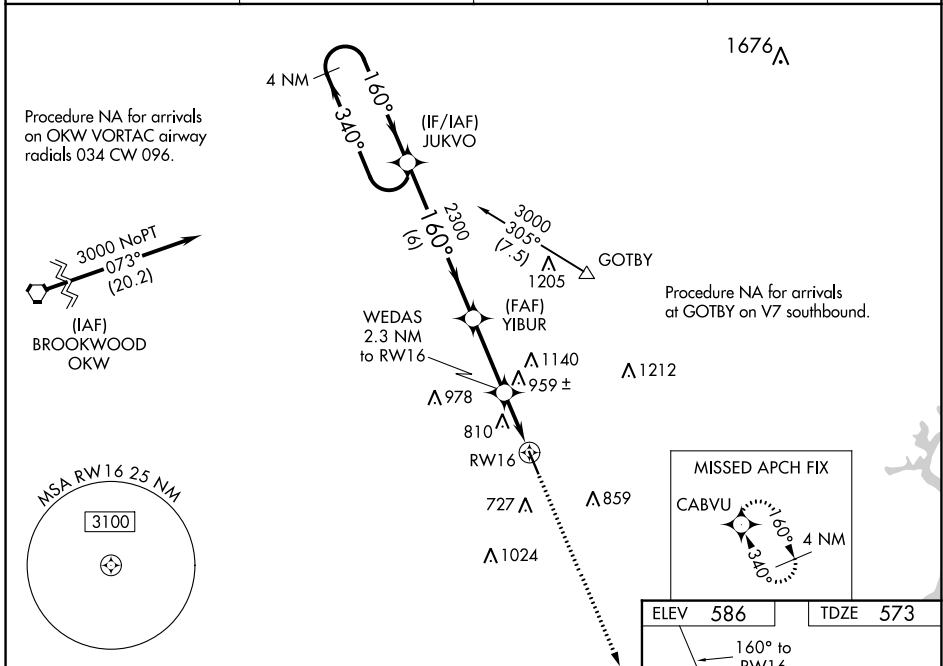
RNAV (GPS) RWY 16

SHELBY COUNTY (EET)

⚠ DME/DME RNP-0.3 NA. Visibility reduction by helicopters NA. When local altimeter setting not received, use Birmingham altimeter setting and increase all DA 63 feet and all MDA 80 feet; increase LPV all Cats, LNAV/VNAV all Cats and LNAV Cats C/D and Circling Cat C visibilities $\frac{1}{4}$ SM. Baro-VNAV NA when using Birmingham altimeter setting. For uncompensated Baro-VNAV systems, LNAV/VNAV NA below -16°C (4°F) or above 47°C (116°F).

⚠ MISSED APPROACH: Climb to 3000 direct CABVU and hold.

ASOS 134.325	BIRMINGHAM APP CON 123.8 256.8	GCO 121.725	UNICOM 122.7 (CTAF) 0
------------------------	--	-----------------------	--



CATEGORY	A	B	C	D
LPV DA	931-1 $\frac{1}{4}$ 358 (400-1 $\frac{1}{4}$)			
LNAV/VNAV DA	1176-2 603 (600-2)			
LNAV MDA	1220-1 647 (700-1)	1220-1 $\frac{1}{4}$ 647 (700-1 $\frac{1}{4}$)		1220-2 647 (700-2)
CIRCLING	1220-1 634 (700-1)	1340-2 $\frac{1}{4}$ 754 (800-2 $\frac{1}{4}$)		1580-3 994 (1000-3)

SE-4, 08 AUG 2024 to 05 SEP 2024

SE-4, 08 AUG 2024 to 05 SEP 2024