

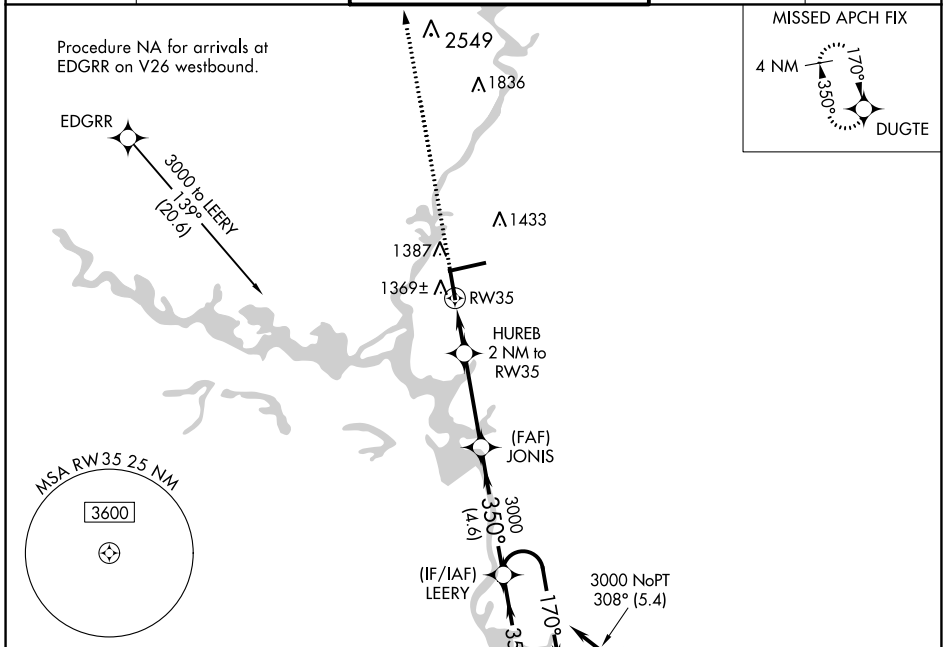
WAAS CH <b>93521</b> <b>W35A</b>	APP CRS <b>350°</b>	Rwy Idg TDZE Apt Elev	<b>6501</b> <b>1251</b> <b>1277</b>
--	------------------------	-----------------------------	---

# RNAV (GPS) RWY 35

CENTRAL WISCONSIN(CWA)

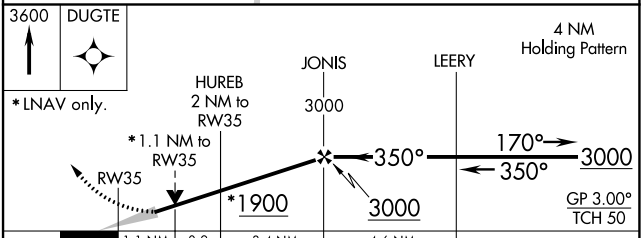
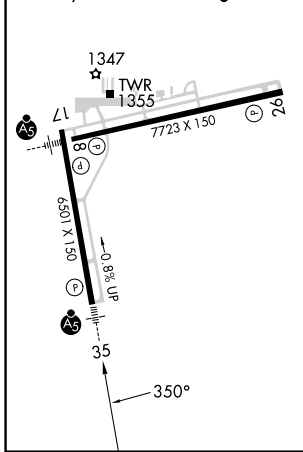
For uncompensated Baro-VNAV systems, LNAV/VNAV NA below -17°C (2°F) or above 54°C (130°F). DME/DME RNP-0.3 NA.	MALSR	MISSED APPROACH: Climb to 3600 direct DUGTE and hold.
	MISSED APCH FIX 4 NM 170° 350° DUGTE	

ATIS <b>127.45</b>	MINNEAPOLIS CENTER <b>124.4 317.7</b>	CWA TOWER* <b>119.75(CTAF) 0 360.7</b>	GND CON <b>121.9 360.7</b>	UNICOM <b>122.95</b>
-----------------------	--	---	-------------------------------	-------------------------



ELEV 1277	<b>D</b>	TDZE 1251
-----------	----------	-----------

REIL Rwy 17 and 26  
HIRL Rwy 8-26 and 17-35



CATEGORY	A	B	C	D
LPV DA		1451-½	200 (200-½)	
LNAV/VNAV DA		1576-¾	325 (300-¾)	
LNAV MDA	1620-½	369 (400-½)	1620-⅝	369 (400-⅝)
<b>C</b> CIRCLING	1740-1	463 (500-1)	1740-1½ 463 (500-1½)	1840-2 563 (600-2)

EC-3, 08 AUG 2024 to 05 SEP 2024

EC-3, 08 AUG 2024 to 05 SEP 2024