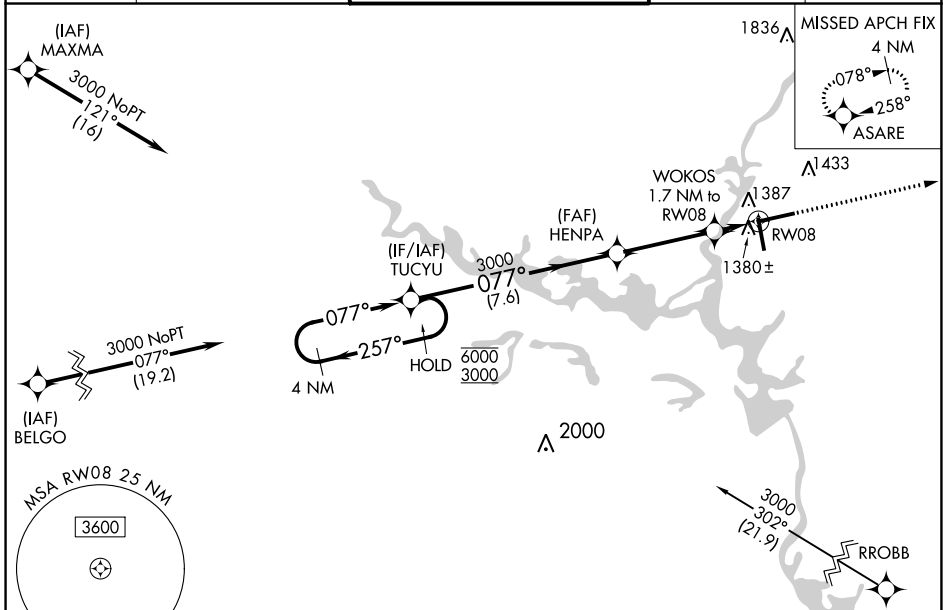


WAAS CH <b>42820</b> <b>W08A</b>	APP CRS <b>077°</b>	Rwy Idg TDZE Apt Elev	<b>7723</b> <b>1274</b> <b>1277</b>
--	------------------------	-----------------------------	---

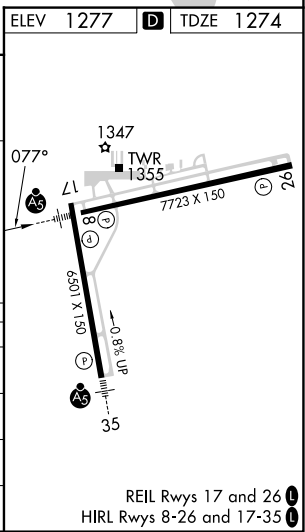
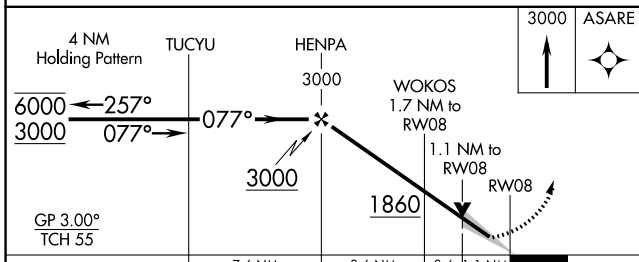
# RNAV (GPS) RWY 8

CENTRAL WISCONSIN (CWA)

RNP APCH - GPS.		MALSR	MISSED APPROACH: Climb to 3000 direct ASARE and hold.		
<p>For uncompensated Baro-VNAV systems, LNAV/VNAV NA below -17°C or above 54°C. For inop ALS, increase LNAV Cat C and D visibility to 1½ SM.</p>					
ATIS <b>127.45</b>	MINNEAPOLIS CENTER <b>124.4 317.7</b>	CWA TOWER ★ <b>119.75 (CTAF) 360.7</b>		GND CON <b>121.9 360.7</b>	UNICOM <b>122.95</b>



ELEV 1277	<b>D</b> TDZE 1274
-----------	--------------------



CATEGORY	A	B	C	D
LPV DA		1474-½	200 (200-½)	
LNAV/VNAV DA		1601-½	327 (400-½)	
LNAV MDA	1640-½	366 (400-½)	1640-¾	366 (400-¾)
<b>C</b> CIRCLING	1740-1	463 (500-1)	1740-1½ 463 (500-1½)	1840-2 563 (600-2)

EC-3, 08 AUG 2024 to 05 SEP 2024

EC-3, 08 AUG 2024 to 05 SEP 2024