

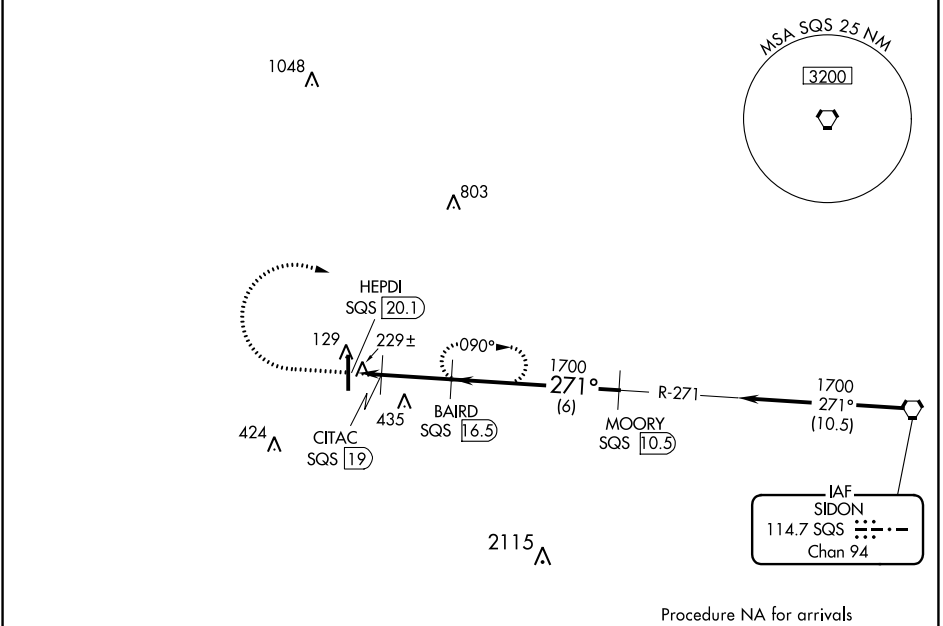
VORTAC SQS <b>114.7</b> Chan <b>94</b>	APP CRS <b>271°</b>	Rwy Idg TDZE Apt Elev	<b>N/A</b> <b>N/A</b> <b>126</b>
--	------------------------	-----------------------------	--

**VOR/DME-A**  
INDIANOLA MUNI (IDL)

**NA** Use Greenville altimeter setting, when not received, use Greenwood altimeter setting and increase all MDA 40 feet and Circling Cat C/D visibility ¼ SM. Circling to Rwy 18 NA at night. Helicopter visibility reduction below 1 SM NA.

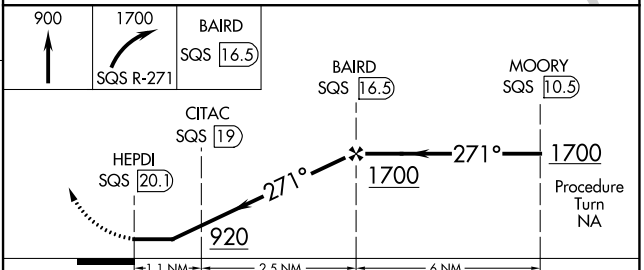
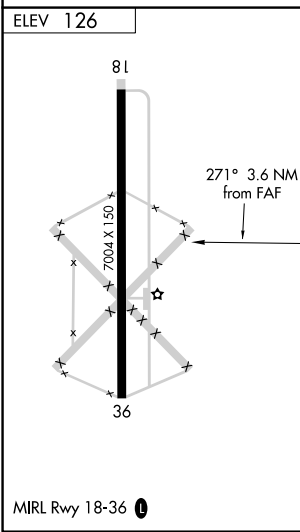
**MISSED APPROACH:** Climb to 900, then climbing right turn to 1700 on SQS VORTAC R-271 to BAIRD/16.50 DME and hold.

GLH ASOS <b>125.525</b>	MEMPHIS CENTER <b>135.875 269.35</b>	UNICOM <b>122.8 (CTAF)</b>
----------------------------	---	-------------------------------



SC-4, 08 AUG 2024 to 05 SEP 2024

SC-4, 08 AUG 2024 to 05 SEP 2024



CATEGORY	A	B	C	D
CIRCLING	580-1 454 (500-1)	600-1 474 (500-1)	840-2 714 (800-2)	840-2¼ 714 (800-2¼)